

Yetter
... for land's sake

6000 ROW UNIT

YETTER MANUFACTURING CO.
FOUNDED 1930

Colchester, IL 62326-0358 • 309/776-4111
Toll free: 800/447-5777
309/776-3222 (Fax)

Yetter

FOREWORD


You've just joined an exclusive but rapidly growing club.

For our part, we want to welcome you to the group and thank you for buying a Yetter product.

We hope your new Yetter products will help you achieve both goals - increase your productivity and increase your efficiency so that you may generate more profit.

This operator's manual has been designed into six major sections: Foreword, Safety Precautions, Installation Instructions, Operation, Troubleshooting and Parts Identification.

Throughout the manual, references may be made to left side and right side. These terms are used as viewed from the operator's seat facing the front of the tractor.

 This **SAFETY ALERT SYMBOL** indicates important safety messages in the manual. When you see this symbol, be alert to the possibility of **PERSONAL INJURY** and carefully read the message that follows.

The word **NOTE** is used to convey information that is out of context with the manual text. It contains special information such as specifications, techniques, reference information and other information of a supplementary nature.

The word **IMPORTANT** is used in the text when immediate damage will occur to the machine due to improper technique or operation. **IMPORTANT** will apply to the same information as specified by **NOTE**, but will be of an immediate and urgent nature.

It is the responsibility of the user to read the operator's manual and comply with the safe and correct operating of the product and to lubricate and maintain the product according to the maintenance schedule in the operator's manual.

The user is responsible for inspecting the machine and for having parts repaired or replaced when continued use of the product would cause damage or excessive wear to the other parts.

It is the user's responsibility to deliver the machine to the Yetter dealer who sold the product, for service or replacement of defective parts which are covered by the warranty policy.

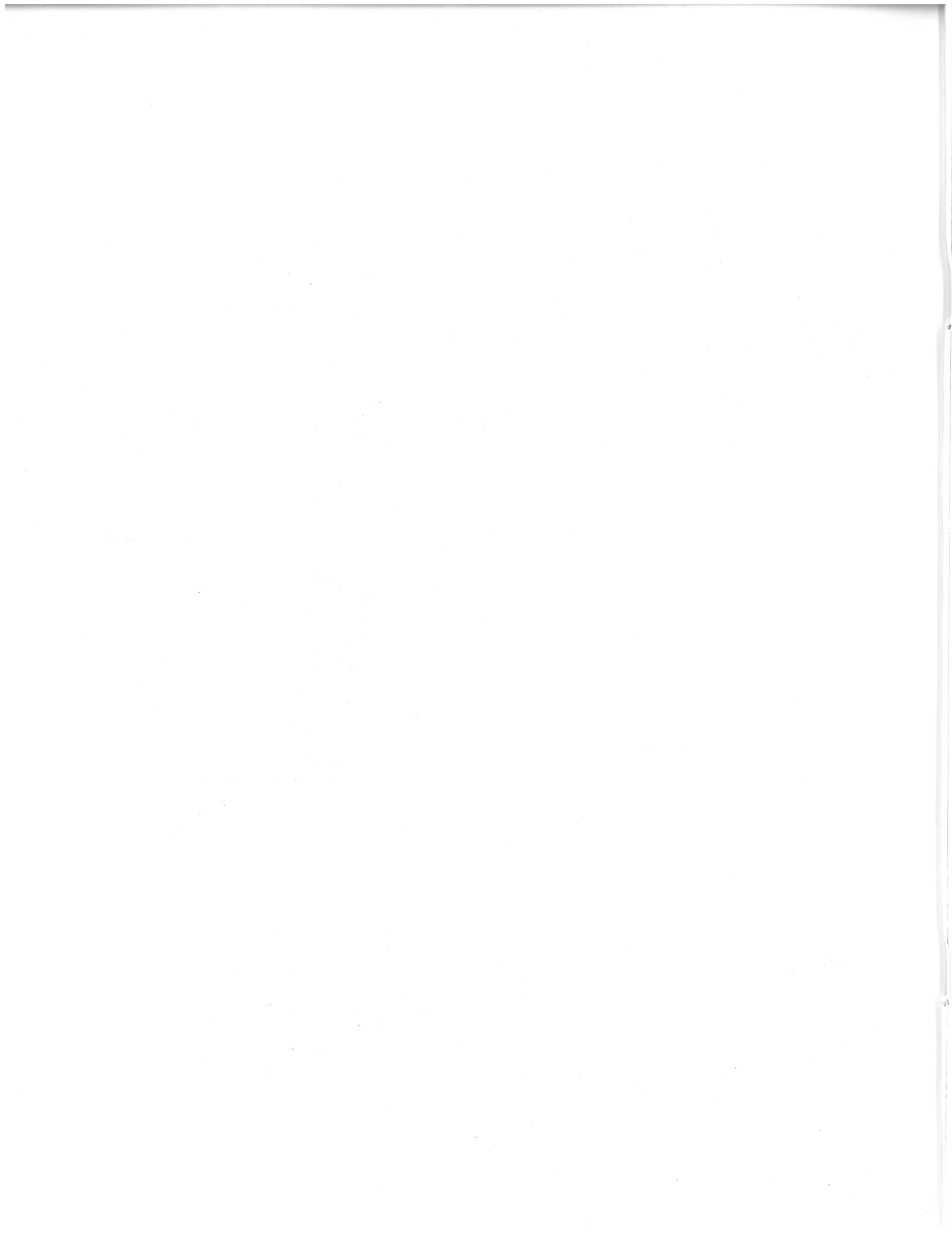
 If you are unable to understand or follow the instructions provided in this publication, consult your local Yetter dealer or contact:
YETTER MANUFACTURING CO.
309/776-4111
800/447-5777
309/776-3222 (FAX)

WARRANTY POLICY

Yetter Manufacturing warrants all products manufactured and sold by it against defects in material. This warranty being expressly limited to replacement at the factory of such parts or products as shall appear to be defective after inspection. This warranty does not obligate the Company to bear cost of labor in replacement of parts. It is the policy of the Company to make improvements without incurring obligations to add them to any unit already sold. No warranty is made or authorized to be made, other than herein set forth. This warranty is in effect for 1 year after purchase.

Dealer _____

Yetter Manufacturing warrants its own products only and cannot be responsible for damages to equipment on which mounted.



SAFETY

A brief description of signal words that may be used in this manual:

CAUTION: Used as a general reminder of good safety practices or to direct attention to unsafe practices.

WARNING: Denotes a specific potential hazard.

DANGER: Denotes the most serious specific potential hazard.

SAFETY PRECAUTIONS

You can make your farm a safer place to live and work if you observe the safety precautions given. Study these precautions carefully and insist that they be followed by those working with you and for you.

Finally, remember this: an accident is usually caused by someone's carelessness, neglect or oversight.



Never clean, lubricate or adjust a machine that is in motion. Always lower or block the implement before performing service.

If machine must be serviced in the raised position, jack or block it up to prevent it from accidentally falling and injuring someone.

Do not allow riders on the tractor or implement.

Use speeds and caution dictated by the terrain being traversed. Do not operate on any slope steep enough to cause tipping or loss of control.

Be sure all personnel are clear of the immediate area before operating.

Read and understand the operator's manual and require all other persons who will operate the equipment to do the same.

Be familiar with all tractor and implement controls and be prepared to stop engine and implements quickly in an emergency.



Consult your implement and tractor operator's manual for correct and safe operating practices.

Beware of towed implement width and allow safe clearance.

FAILURE TO HEED MAY RESULT IN PERSONAL INJURY OR DEATH.

INSTALLATION

OPTION 1: 6000-005 Row Unit less U-Bolts

Includes 6000-001 Base Row Unit
6000-002 Close Wheel Kit
6000-003 Depth Control & Seed Tube

OPTION 2: 6000-001 Base Row Unit

Requires re-using old Close Wheels, Depth Control & Seed Tube

AVAILABLE KITS

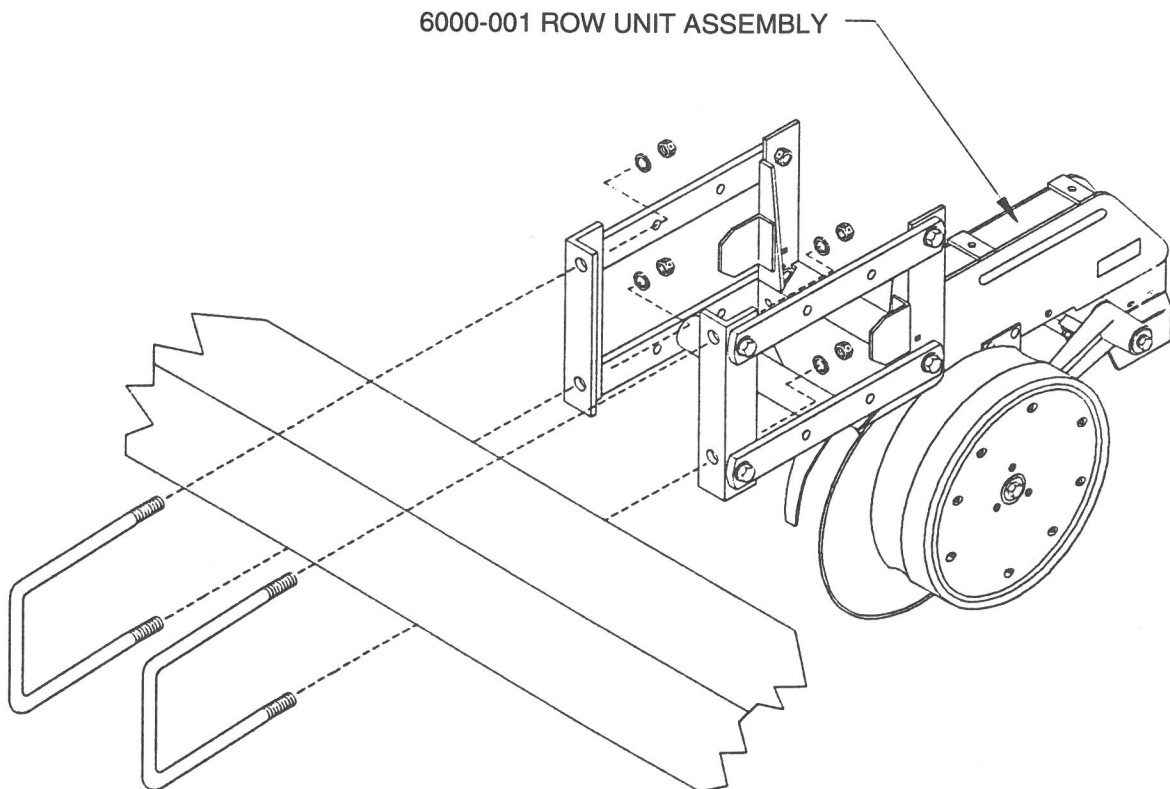
6000-002 Close Wheel Attachment
6000-003 Depth Control & Seed Tube
6000-010 5 x 7 U-Bolt Kit
6000-011 7 x 7 U-Bolt Kit



WARNING: Never work under the planter while in raised position without using safety lockups.

OPTION 1

Remove the old row units from the bar. Attach the 6000-001 row unit to the bar using either the U-bolts, lock washers & nuts that you removed or new ones from one of the above kits.



1460

INSTALLATION

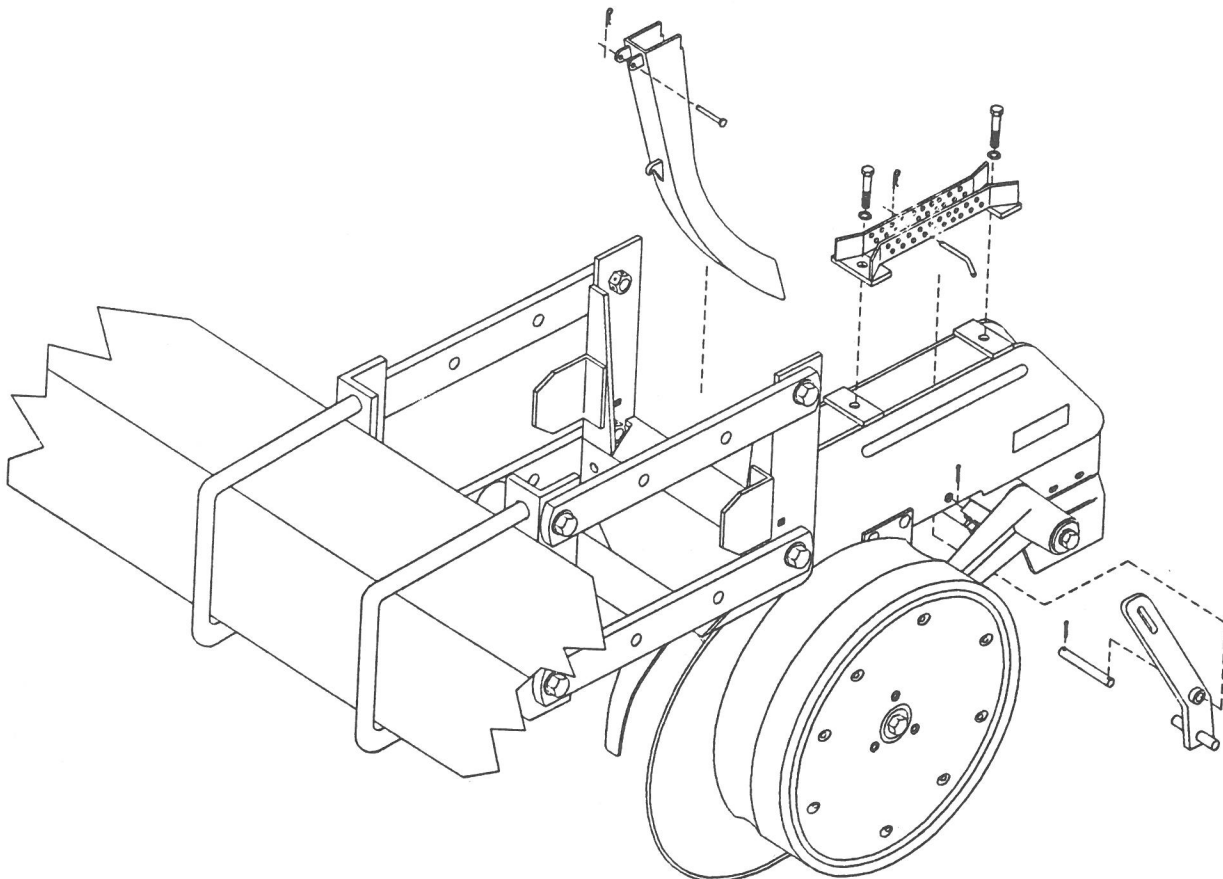
Assemble the 2515-515 small seed tube to the 6000-001 row unit assembly by sliding the seed tube down into the row unit, resting the hook on the seed tube on the pin. Align the holes in the seed tube with the holes in the row unit and secure with the 2529-505 clevis pin and 2570-159 hairpin cotter.

Assemble the 6000-224 depth adjustment bracket to the 6000-001 row unit assembly by positioning the bracket over the holes located on the top, back of the row unit. Secure the bracket with 2 of the 2502-237 3/8 x 1" hex head bolts and 2525-251 3/8" lockwashers.

Position the 6000-228 stop, depth adjustment through the bottom of the row unit so that the top of the stop is through the 6000-224 air depth adj. bracket and the hole located on the bend of the stop is aligned with the hole on the side of the row unit. Secure the stop with the 6000-633 mounting pin and 2531-107 1/8 x 1" cotter pin.

The remaining 2570-448 1/8" hairpin cotter and 6000-365 unit depth control pin are used to position the stop for various depths. See page 10 on how to adjust the depth control.

6000-003 SEED TUBE AND DEPTH CONTROL KIT

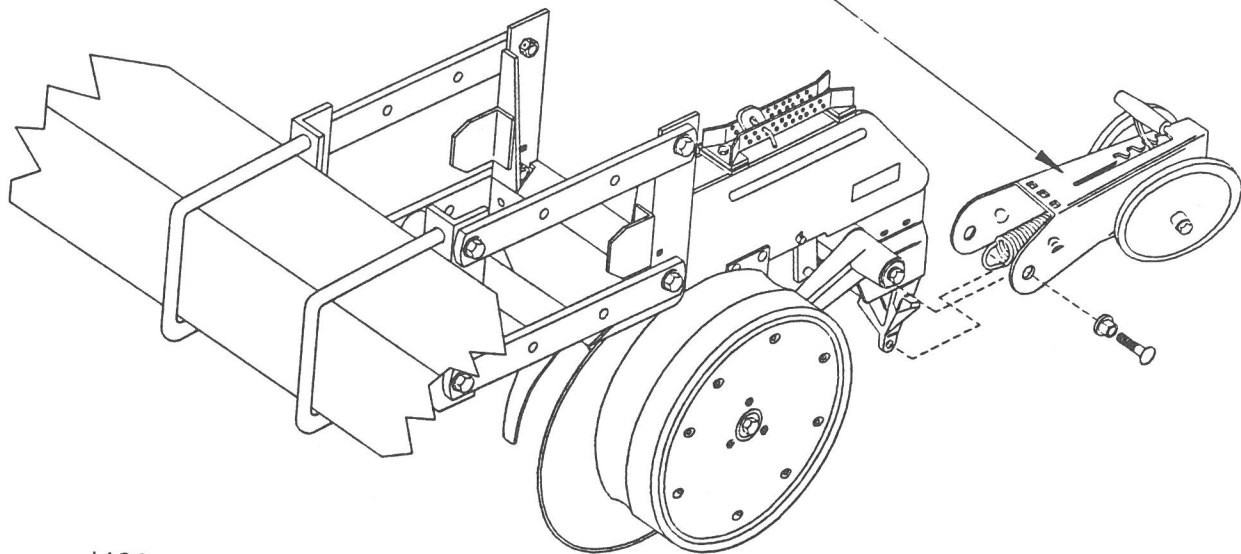


INSTALLATION

Once the 6000-002 close wheel attachment has been assembled following the instructions provided in the kit, the 6000-002 close wheel attachment can then be assembled to the 6000-001 row unit.

Assemble the 6000-002 close wheel attachment to the 6000-001 row unit by attaching the end of the 6000-525 close wheel spring through the hole located at the bottom of the 6000-051 row unit sub assembly and directly behind the gauge wheel. The hole in the end of the 6000-247 closing wheel arm is then positioned over the oval hole located on the row unit sub assembly and secured with a 6000-523 eccentric bushing and a 2505-345 1/2" x 2 carriage bolt. The 6000-523 eccentric bushing is provided to center the closing wheels on the row. Turn the eccentric bushing until the closing wheel is centered and tighten.

CLOSE WHEEL ATTACHMENT

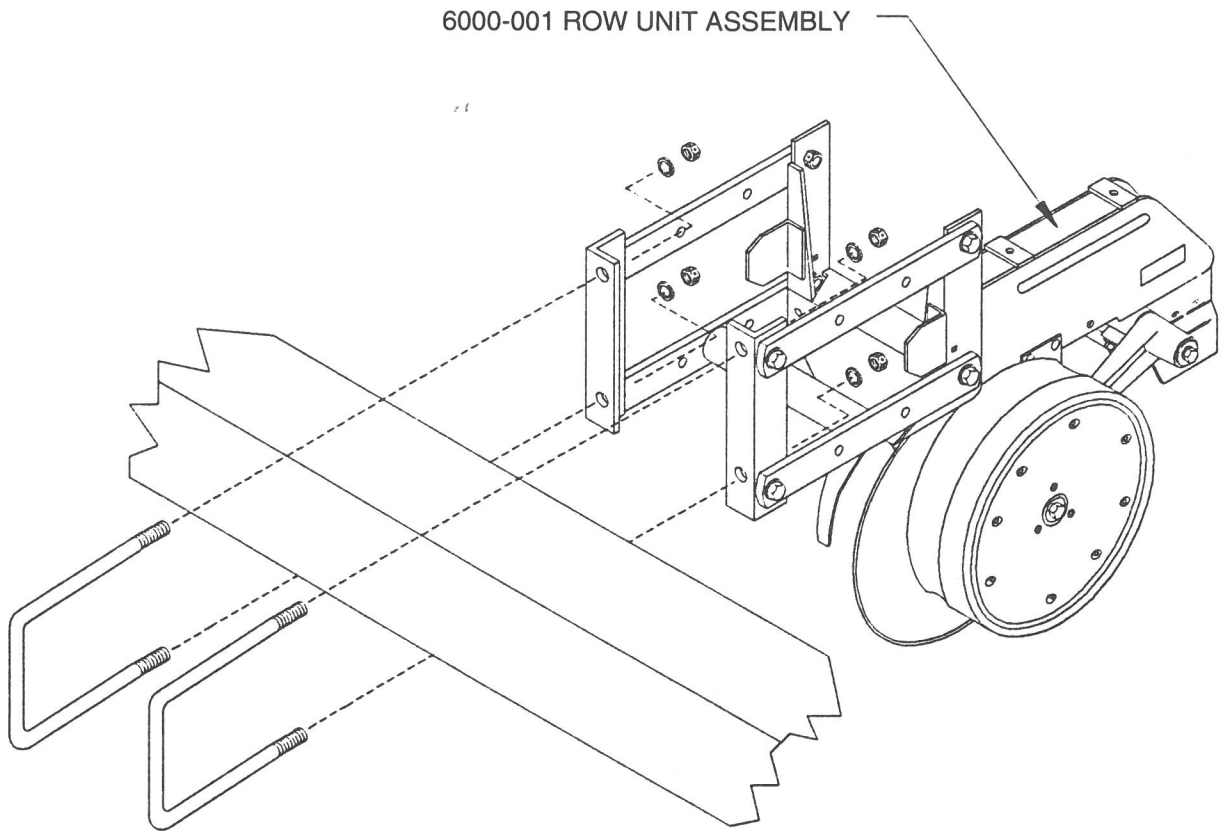


1462

INSTALLATION

OPTION 2

Remove the old row units from the bar. Attach the 6000-001 row unit to the bar using either the U-bolts, lock washers & nuts that you removed or new ones from one of the kits offered.



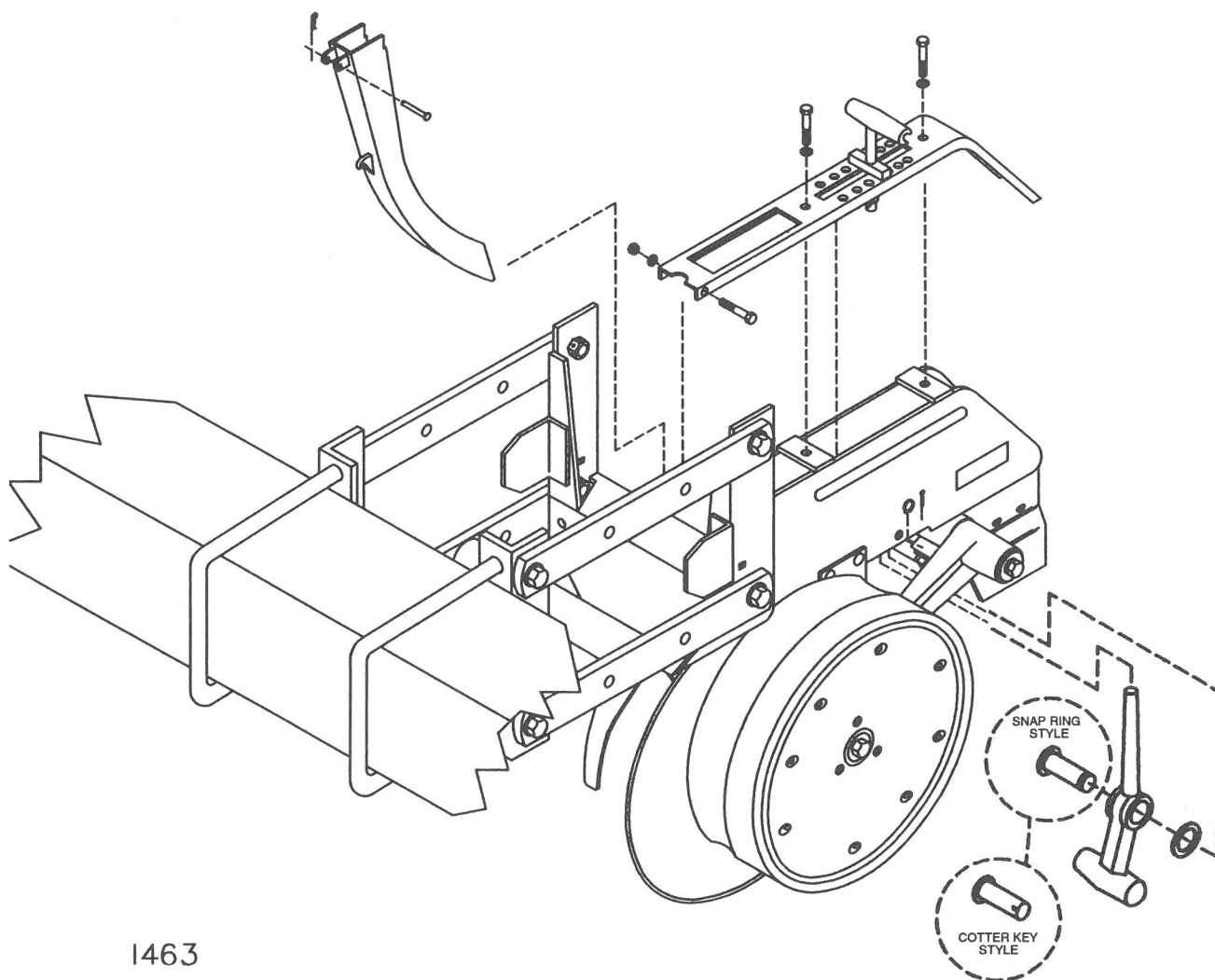
1460

INSTALLATION

Assemble the seed tube to the row unit assembly by sliding the seed tube down into the 6000-001 row unit, resting the hook on the seed tube on the pin. Align the holes in the seed tube with the holes in the row unit and secure with the clevis pin and hairpin cotter.

Assemble the depth adjustment bracket to the 6000-001 row unit assembly by positioning the cover shaft over the holes located on the row unit. Insert the stop depth adj. so that it passes up through the row unit and cover shaft. Secure the stop depth adj. with either the snap ring style or cotter key style pin and hairpin cotter.

EXISTING JD 7000-7100 TUBE AND DEPTH CONTROL KIT

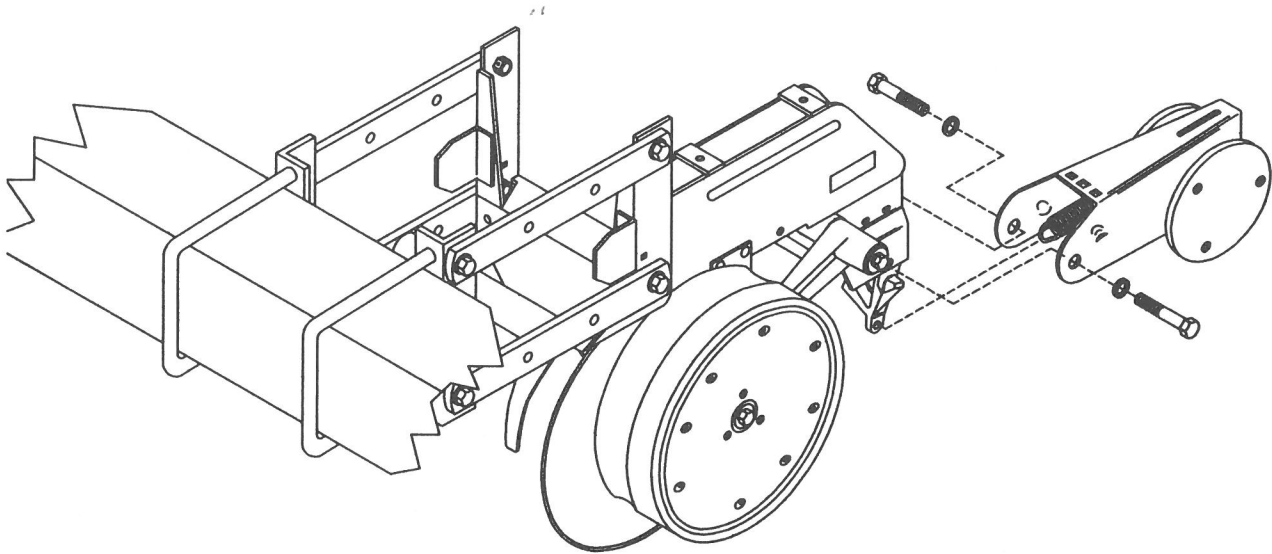


1463

INSTALLATION

Assemble the close wheel attachment to the 6000-001 row unit by attaching the end of the close wheel spring through the hole located at the bottom of the 6000-051 row unit sub assembly and directly behind the gauge wheel. The hole in the end of the closing wheel arm is then positioned over the oval hole located on the row unit sub assembly and secured with the bolt and washer that were previously removed.

EXISTING 7000-7100 JD CLOSE WHEEL ATTACHMENT

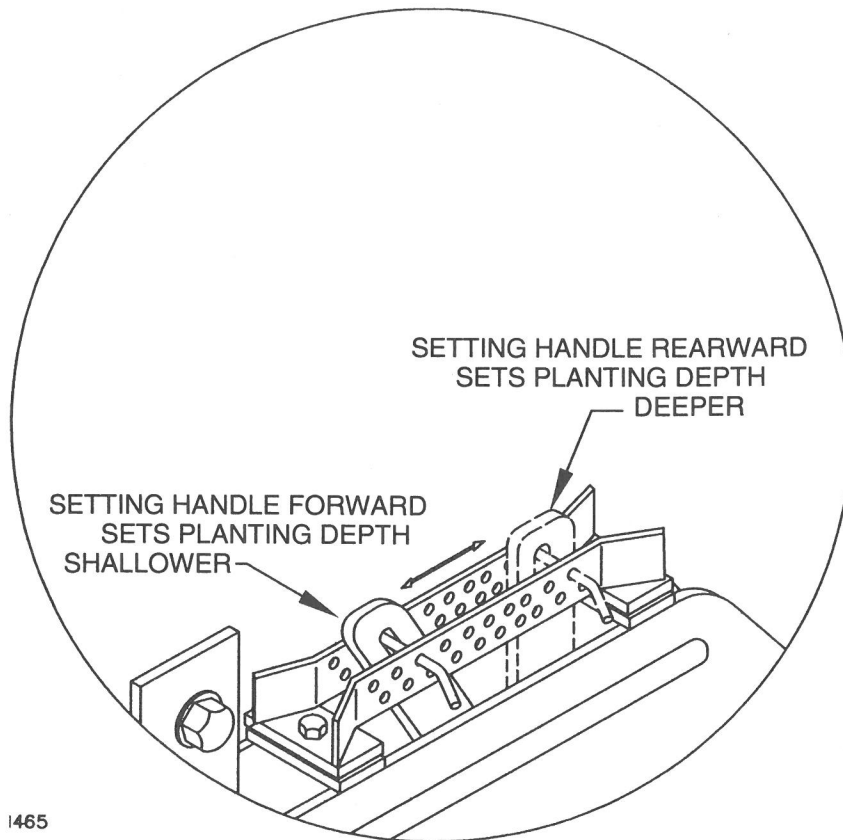


1464

OPERATION

ADJUSTING PLANTING DEPTH

Adjust planting depth with the adjustment handle & pin on top of the unit frame.



WARNING: Never work under the planter while in raised position without using safety lockups.

Planting depth is controlled by the planting unit gauge wheels. To adjust the depth raise the planter unit to remove weight from the gauge wheels.

Move the handle forward to decrease depth; rearward to increase. Each hole adjustment changes the depth approximately 1/4" (1/2" for holes in the same row). Lower planter and drive at normal planting speed. Check the planting depth of all rows. Readjust as required to obtain desired planting depth.

NOTE: When operating in the field, lower the planter only when the tractor is moving forward. This will prevent the planter openers from clogging in moist soil conditions.

NOTE: Closing wheel pressure can affect seed depth. Do not consider the entire center ridge left by the closing wheels as part of the seed depth. The loose soil in this ridge serves as mulch.

OPERATION

"V" CLOSING WHEEL ADJUSTMENT



WARNING: Never work under the planter while in raised position without using safety lockups.

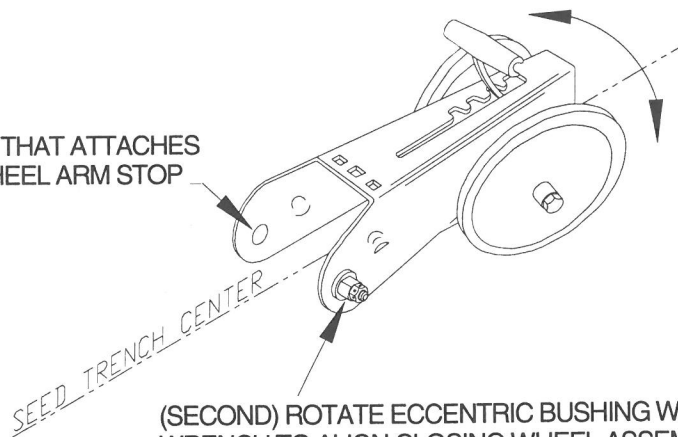
Angled closing wheels trail behind the seed opener to close the seed trench left by the opener. Adjustable spring pressure permits proper firming of the soil beside the seed rather than directly above it. An eccentric bushing allows centering the closing wheel on the row to properly apply pressure on both sides of the seed when closing the seed trench. When adjusted properly, the closing wheels provide good seed to soil contact and helps prevent crusting.

To ensure that the closing wheels are properly centered on the row, pull the planter ahead a few feet as if you were planting. On every row, measure the distance from the center of the seed trench to both closing wheels. If the closing wheels are not centered over the row, loosen the closing wheel bolts and rotate the eccentric bushings as required to center the wheels. When the closing wheels are centered, tighten the bolts holding the closing wheels to the row unit.

(CLOSING WHEEL ASSEMBLY SHOWN NOT ASSEMBLED TO ROW UNIT FOR VISUAL CLARITY)

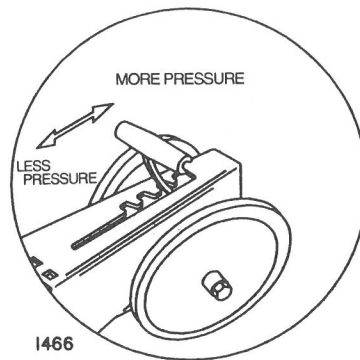
(FIRST) LOOSEN HARDWARE THAT ATTACHES CLOSING WHEEL ARM TO WHEEL ARM STOP

1468



(SECOND) ROTATE ECCENTRIC BUSHING WITH WRENCH TO ALIGN CLOSING WHEEL ASSEMBLY WITH CENTER OF SEED TRENCH

After setting the planting depth to the correct depth, check the operation of the closing wheels. The closing wheels must apply enough down pressure to close the seed trench and insure good seed to soil contact. If the seed trench is not being closed properly increase the closing wheel pressure by moving the closing wheel lever reward.

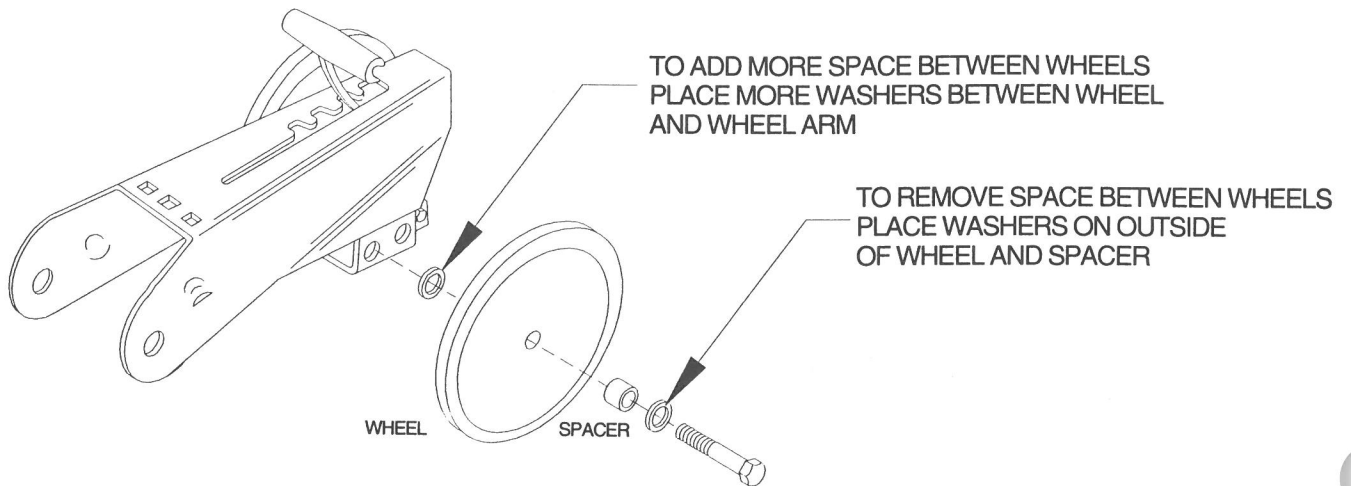


Closing wheels must not sink into the soil too deeply or the seed placement could be adversely affected, especially when planting shallow. If the closing wheels are applying too much pressure & the seed is being moved by the closing wheels, decrease the pressure by moving the lever forward.

OPERATION

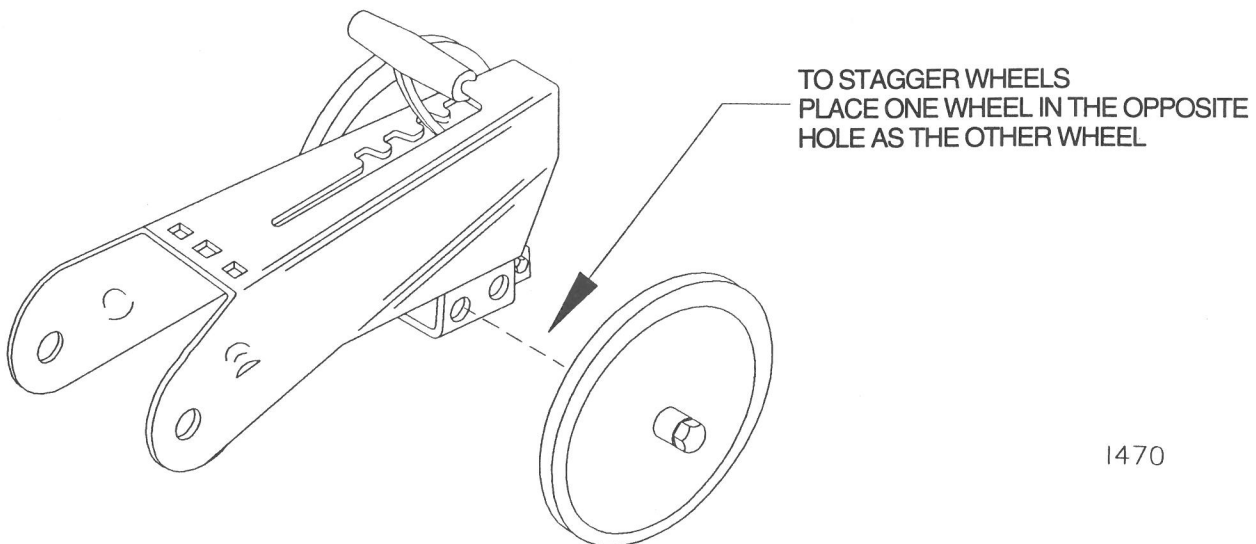
Light soils usually require less down pressure, heavy soils more.

In certain conditions, seed to soil contact and residue flow can be improved by spacing the closing wheels further apart &/or staggering them. To space them further apart, remove the bolt & nut holding the closing wheel to the closing wheel arm, place 5/8" washers (not provided) between the closing wheel and the arm, and re-assemble the closing wheel to the arm. To space the closing wheels closer together, remove the spacers between the closing wheels and the closing wheel arm and reassemble the wheel to the arm with the spacer on the outside of the closing wheel.



1469

Two mounting holes for each closing wheel are provided in the closing wheel arm. To stagger the closing wheels, remove one closing wheel from the arm and reassemble it in the other hole in the closing wheel arm.



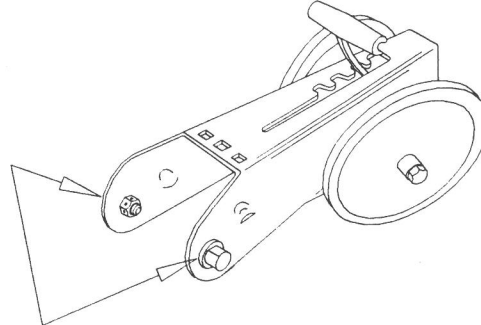
1470

OPERATION

LUBRICATION

Oil the closing wheel bushings weekly with a general purpose oil.

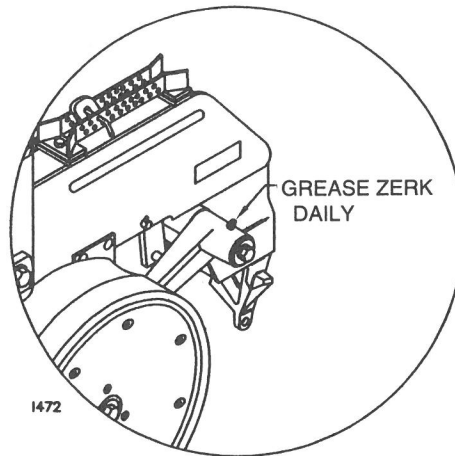
(CLOSING WHEEL ASSEMBLY SHOWN NOT ASSEMBLED TO ROW UNIT FOR VISUAL CLARITY)



OIL BUSHINGS WEEKLY

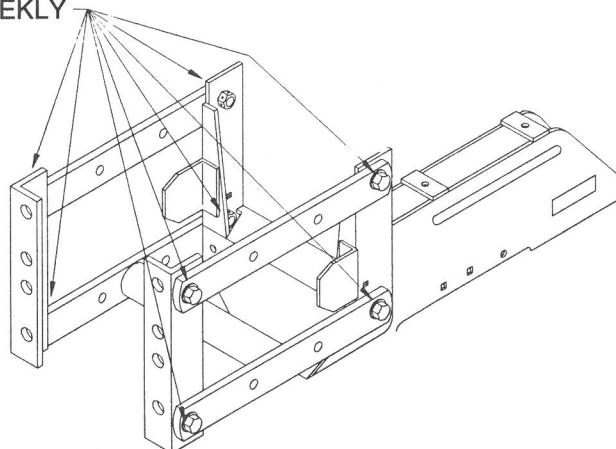
1473

Grease the gauge wheel arms daily. 1 Zerk per arm.



Oil the parallel arm bushings weekly. Each week check each bolt for proper torque. If the bolt is loose, remove it and the bushing and inspect for cracks and wear. Replace the bushing if necessary.

OIL BUSHINGS WEEKLY



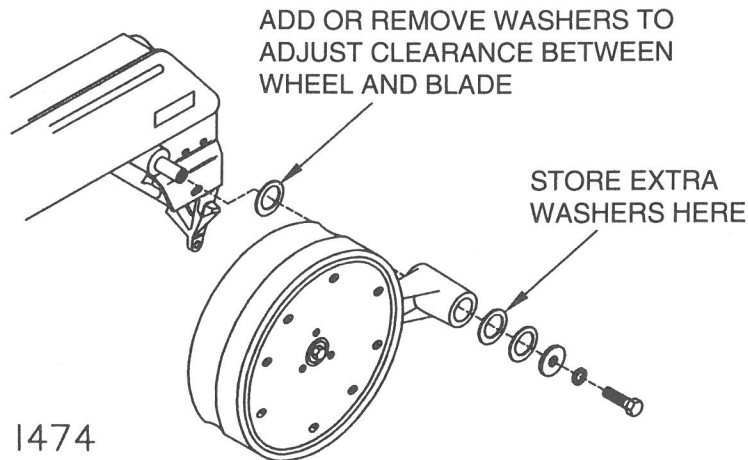
1471

OPERATION

GAUGE WHEEL ADJUSTMENT

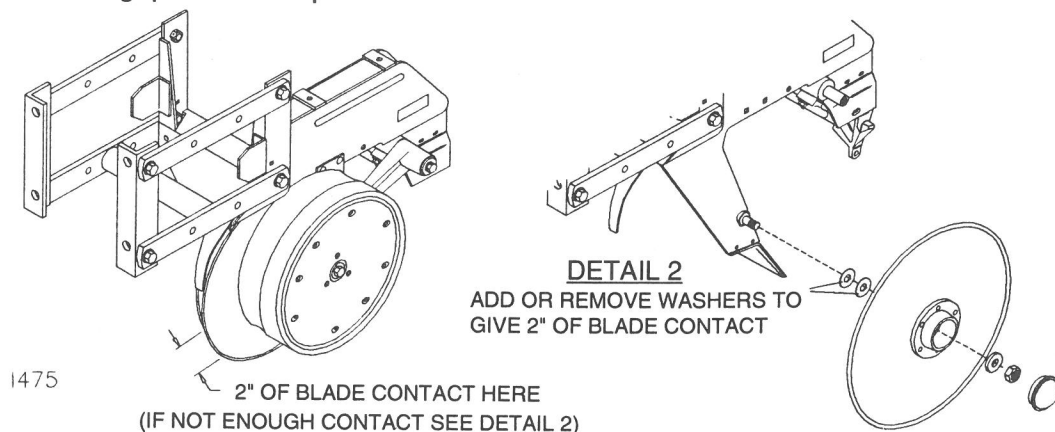
To prevent an accumulation of residue, gauge wheels should just contact the opener blades. When adjusted properly, gauge wheels and opener blades should turn with only slight resistance.

To adjust clearance between the gauge wheels and opener blades, add or remove spacer washers between the shank and the gauge wheel arm. Store extra washers between the gauge wheel arm and the large flat washer on the outer side of the gauge wheel arm. In sticky soil you may get better performance by spacing the gauge wheels slightly away from the opener blades.



SEED OPENER BLADE ADJUSTMENT

When properly adjusted the seed opener blades should lightly contact each other over at least 2" as shown below. The gap between opener blades should not exceed 1/8" when blades are rotated.



Shim washers are provided on the opener blade spindles to shim the blades in or out. If the opener blades contact less than 2" shim washers should be removed. If the contact is more than 2" or if the blades require more than slight effort to rotate shim washers should be added.

To change the shim washers:

1. Remove gauge wheel.
2. Remove scraper.
3. Remove bearing dust cap.
4. Remove jam nut, washer and opener blade.
5. Remove or add shim washers as required.

OPERATION



NOTE: The left side opener uses a left hand threaded nut. Do not over tighten. Damage to the mounting spindle requires replacing the entire row unit shank.

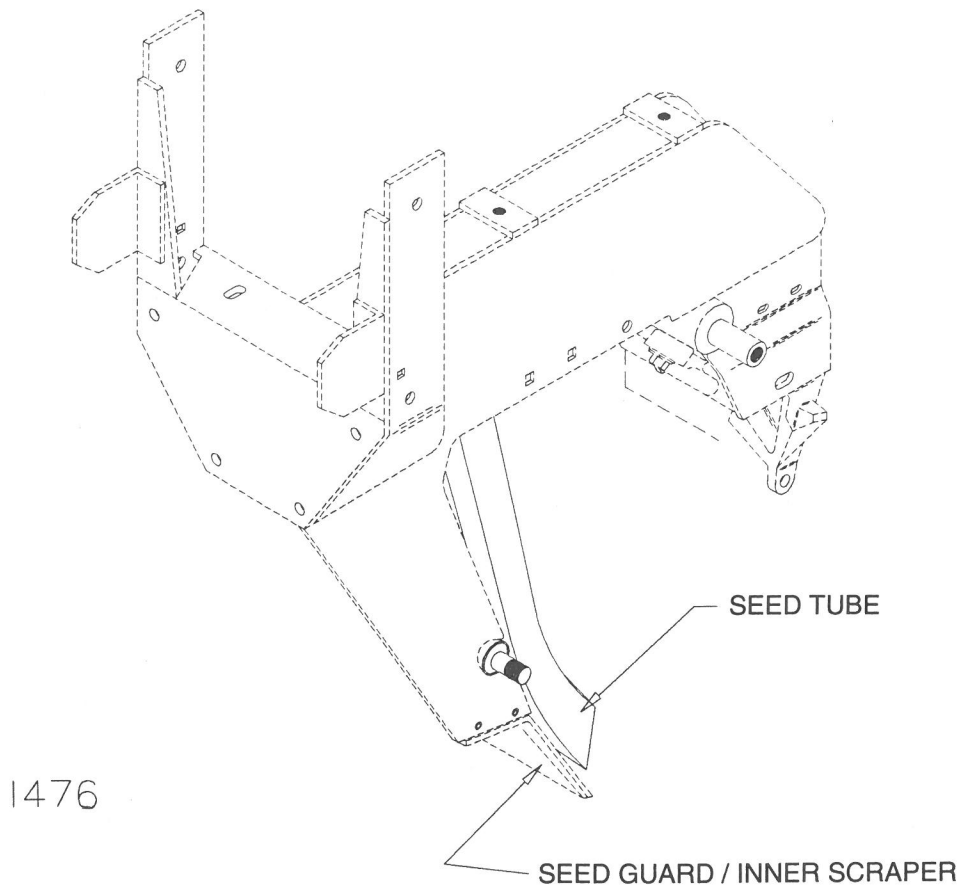
After shimming, replace the parts you removed and check both the contact area and the effort required to turn the opener blade and the gauge wheel.



NOTE: If the opener blades or the gauge wheels require more than slight effort to rotate after tightening all bolts, they may not rotate when planting in light soil or at shallow depths. If they do not rotate the seed depth may vary and the opener may push dirt & residue ahead of it.

SEED TUBE GUARD INNER SCRAPER

The seed tube guard protects the seed tube and scrapes dirt from the inside of the opener blades. Periodically remove each seed tube and check for wear. Excessive wear on the seed tube indicates that the seed tube guard is worn and needs to be replaced.

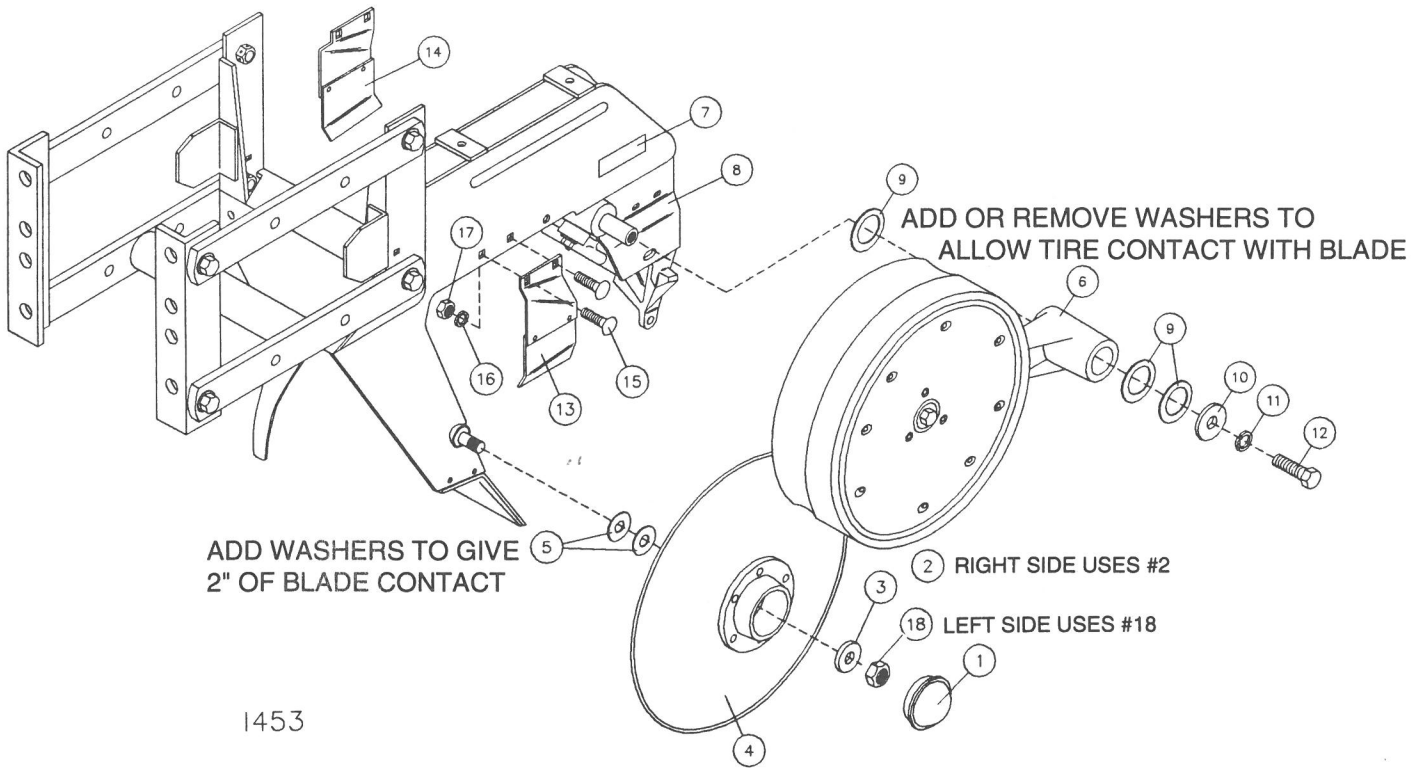


No-till planting and planting in hard ground generally cause the seed tube guard to wear faster. To replace the seed tube guard you must remove the gauge wheels and opener blades.

TROUBLESHOOTING

<i>Problem</i>	<i>Possible Cause</i>	<i>Solution</i>
Closing wheel(s) leave severe imprint in soil.	Too much closing wheel down pressure.	Reduce closing wheel pressure.
Closing wheel(s) not firming soil around seed.	Insufficient closing wheel pressure.	Increase closing wheel pressure.
Closing wheel running on top of seed trench.	Closing wheels not centered.	Rotate eccentric bushing(s) to center closing wheels.
Closing wheels throwing dirt & not closing seed trench.	Closing wheels not centered on the row.	Adjust eccentric bushing to center closing wheels.
Seed on top of ground.	Closing wheel pressure too high preventing opener blades from penetrating to proper depth.	Reduce closing wheel pressure.
	Inadequate down pressure to push opener blades into the ground.	Adjust (or add) down pressure springs to push opener blades into the ground and keep pressure on the gauge tires.
	Seeds bouncing out of the furrow.	Install seed flap 6000-177.
	Seeds bouncing out of the furrow.	Install seed press wheel kit 6200-120.

PARTS IDENTIFICATION

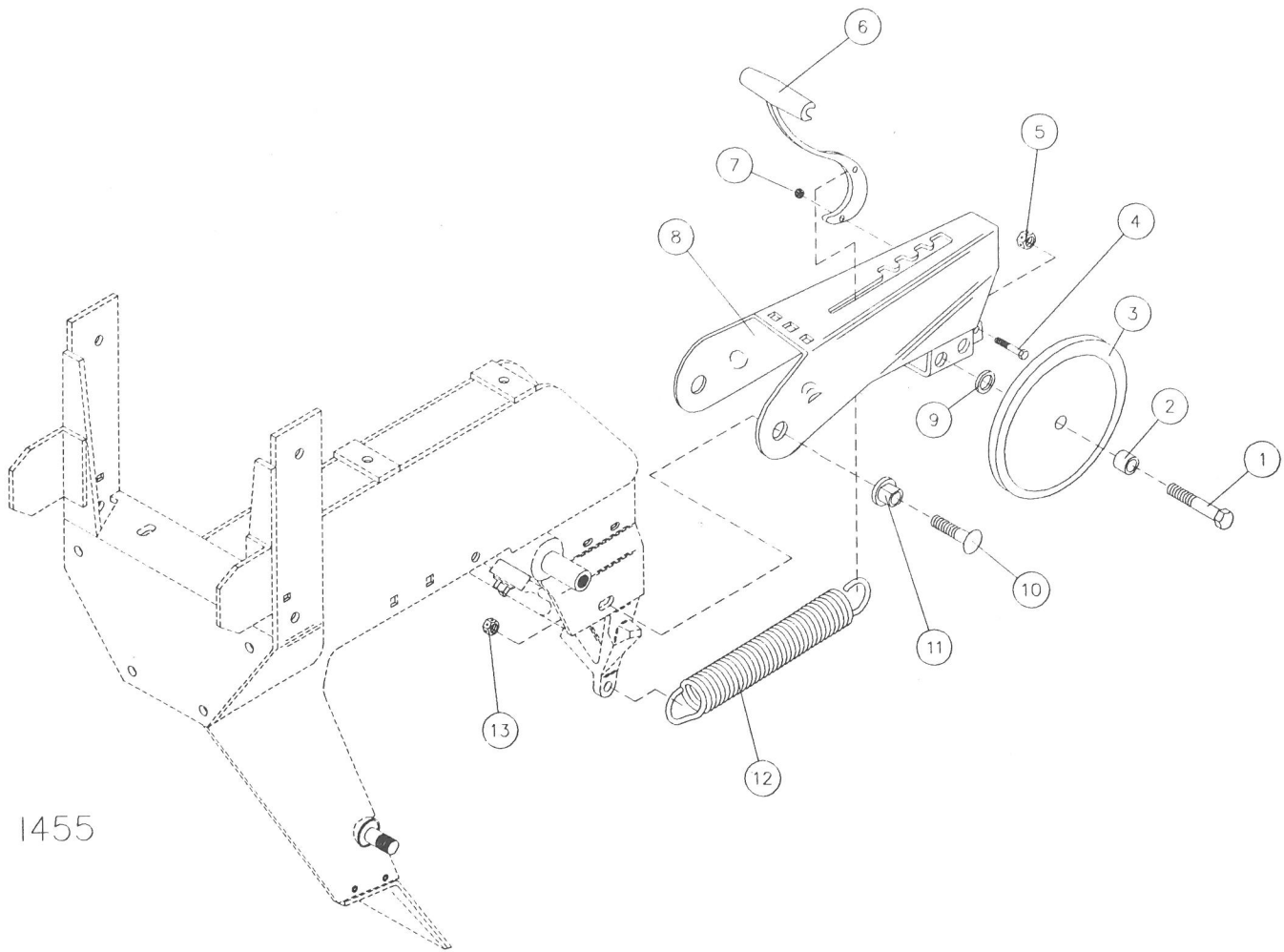


1453

6000-001 ROW UNIT ASSEMBLY

Key	Qty	Part No.	Description
1	2	2570-712	Cap, Hub, JD# A52024
2	1	2520-453	5/8-11 Jam Hex Nut ZP
3	2	2527-563	5/8" ID x 1" OD x 14 Ga. M.B. ZP
4	2	6000-413	Planter Blade Ass'y
5	4	2527-562	5/8" ID x 1" OD 18 Ga. M.B. ZP
6	2	6000-527	Gauge Arm and Wheel Ass'y
7	2	2565-162	Yetter Decal, 1 1/2 x 4 1/2
8	1	6000-051	Row Unit Sub Assembly
9	8	2527-564	1" ID x 1 1/2" OD x 14 Ga. M.B. ZP
10	2	2526-351	1/2 Std. Flatwasher ZP
11	2	2525-352	1/2 Med Lockwasher ZP
12	2	2502-292	1/2-13 x 1 HHCS Gr. 5 ZP
13	1	6000-107	L.H. Disc Scraper Ass'y
14	1	6000-106	R.H. Disc Scraper Ass'y
15	4	2505-259	3/8-16 x 3/4 Car Blt. Gr. 2 ZP
16	4	2525-251	3/8 Med. Lockwasher
17	4	2520-251	3/8-16 Hex Nut ZP
18	1	2520-466	5/8-11 L.H. Jam Hex Nut ZP

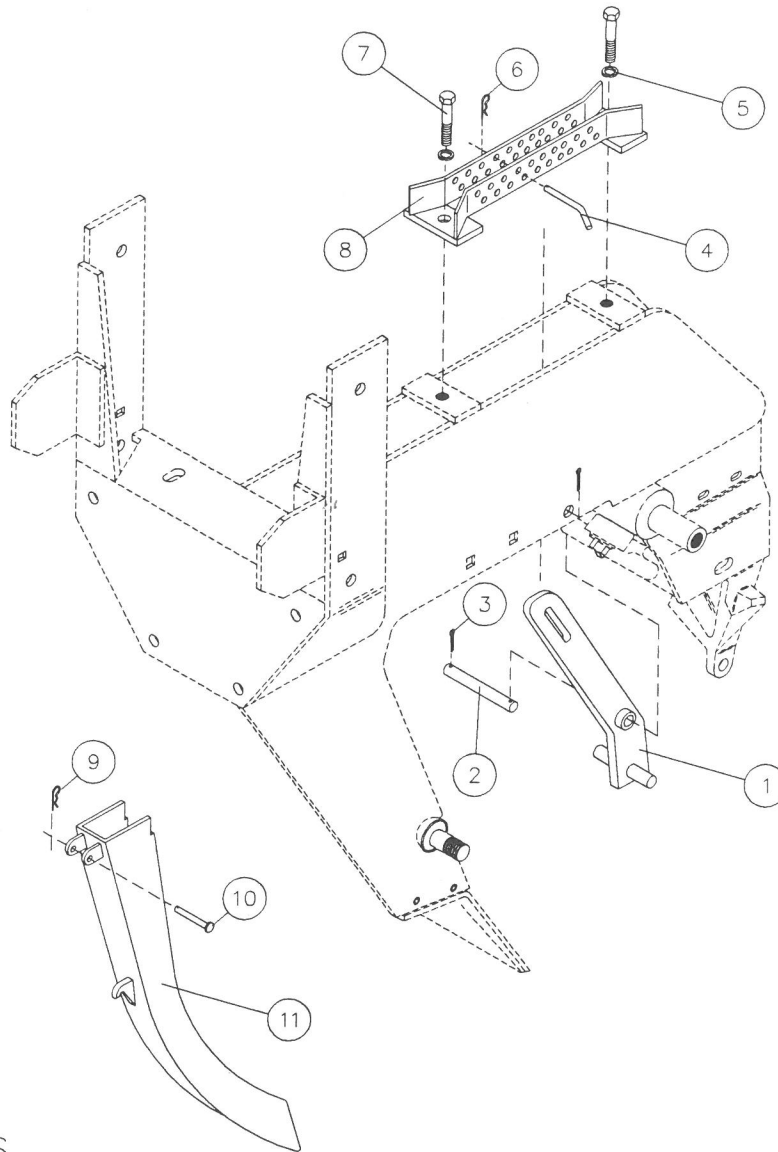
PARTS IDENTIFICATION



6000-002 CLOSE WHEEL KIT ASSEMBLY

Key	Qty	Part No.	Description
1	2	2502-324	5/8-11 x 3-1/2 HHCS Gr. 5 ZP
2	2	6000-335	9/16" Bushing ZP
3	2	2570-751	1 x 12 Nylon Closing Wheel 40M
4	1	2502-206	5/16-18 x 1-1/2 HHCS Gr. 5 ZP
5	2	2520-459	5/8-11 Lock Hex Nut ZP
6	1	6000-524	Close Wheel Lever
7	1	2520-205	5/16-18 Lock Hex Nut ZP
8	1	6000-247	Close Wheel Arm W.A.
9	2	2526-453	5/8 SAE Flatwasher, ZP
10	2	2505-345	1/2-13 x 2 Car Bit. Gr. 5 ZP
11	2	6000-523	Eccentric Bushing Close Wheel
12	1	6000-525	Close Wheel Spring (Painted)
13	2	2520-357	1/2-13 Lock Hex Nut ZP

PARTS IDENTIFICATION



1456

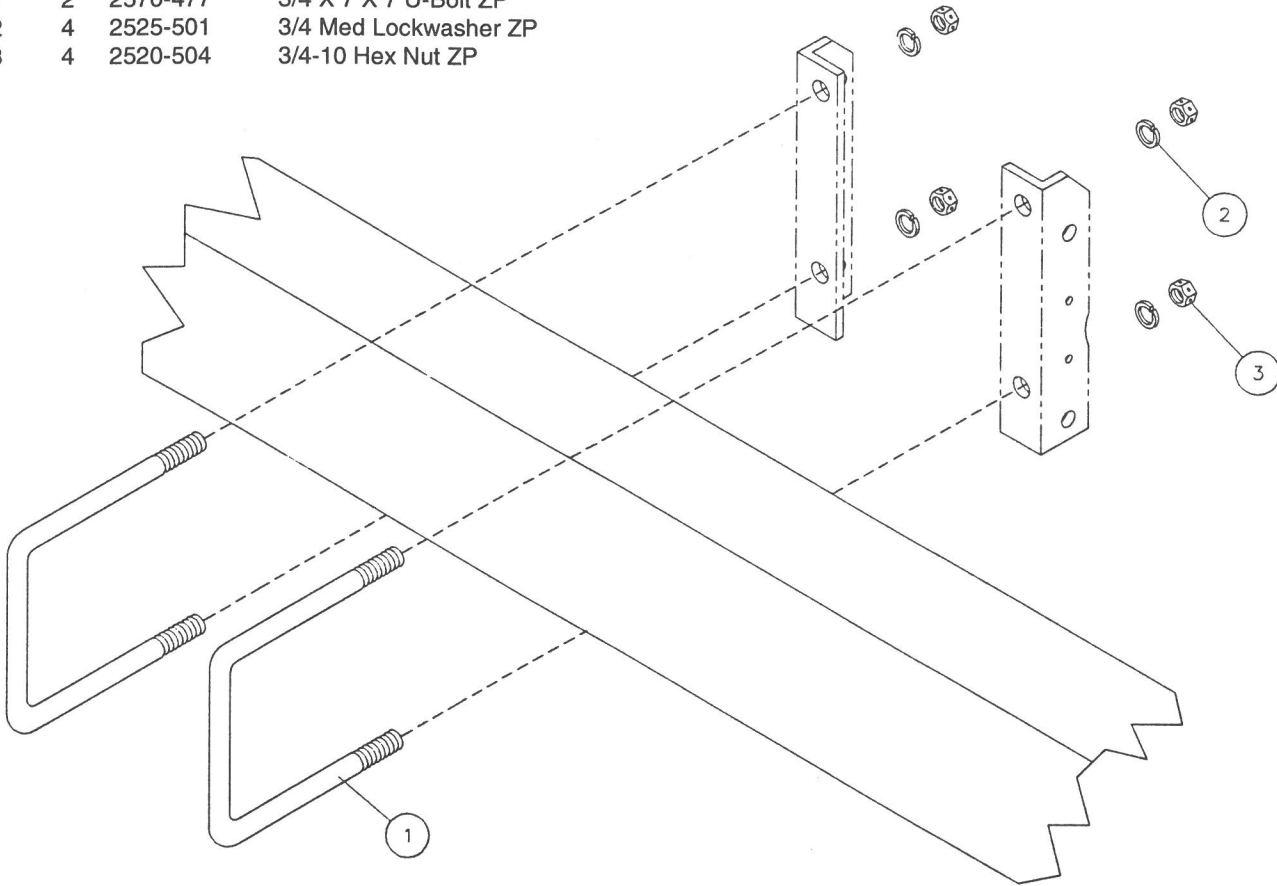
6000-003 DEPTH CONTROL & SEED TUBE ASSEMBLY

Key	Qty	Part No.	Description
1	1	6000-228	Stop, Air Depth Adj. W.A.
2	1	6000-633	Mounting Pin
3	2	2531-107	1/8 x 1 Cotter Pin ZP
4	1	6000-365	Air Unit Depth Control Pin
5	2	2525-251	3/8 Med Lockwasher ZP
6	1	2570-747	3/32 Hairpin Cotter
7	2	2502-237	3/8-16 x 1 HHCS Gr. 5 ZP
8	1	6000-224	Air Depth Adj. Bracket W.A.
9	1	2570-159	1/16 Hairpin Cotter
10	1	2529-505	1/4 x 2 1/4 Clevis Pin ZP
11	1	2515-515	Small Seed Tube

PARTS IDENTIFICATION

6000-010 5 x 7 PLANTER U-BOLT KIT

Key	Qty	Part No.	Description
1	2	2570-477	3/4 X 7 X 7 U-Bolt ZP
2	4	2525-501	3/4 Med Lockwasher ZP
3	4	2520-504	3/4-10 Hex Nut ZP

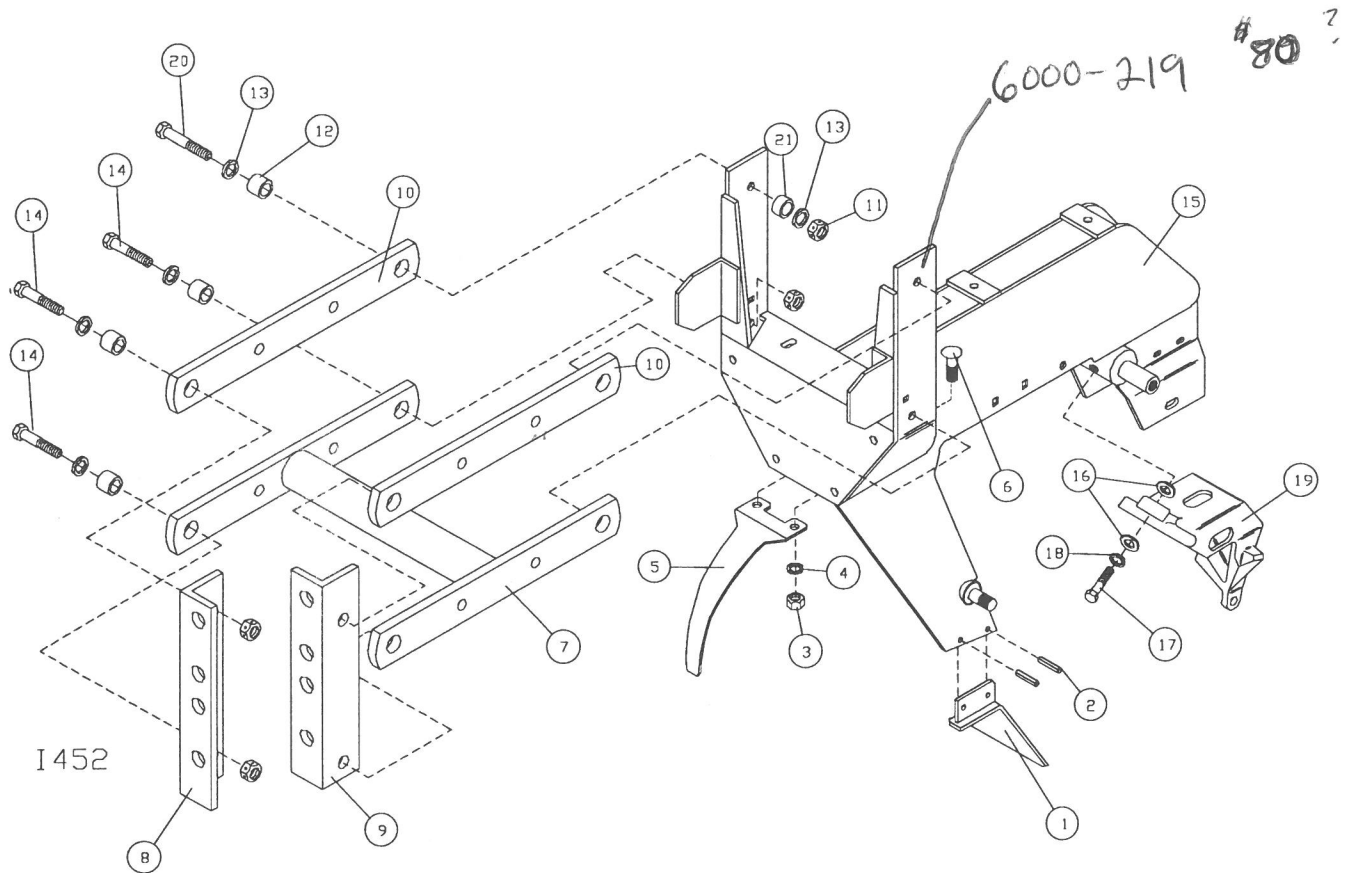


1459

6000-011 7 x 7 PLANTER U-BOLT KIT

Key	Qty	Part No.	Description
1	2	2570-478	3/4 x 7 x 9 U-Bolt ZP
2	4	2525-501	3/4 Med Lockwasher ZP
3	4	2520-504	3/4-10 Hex Nut ZP

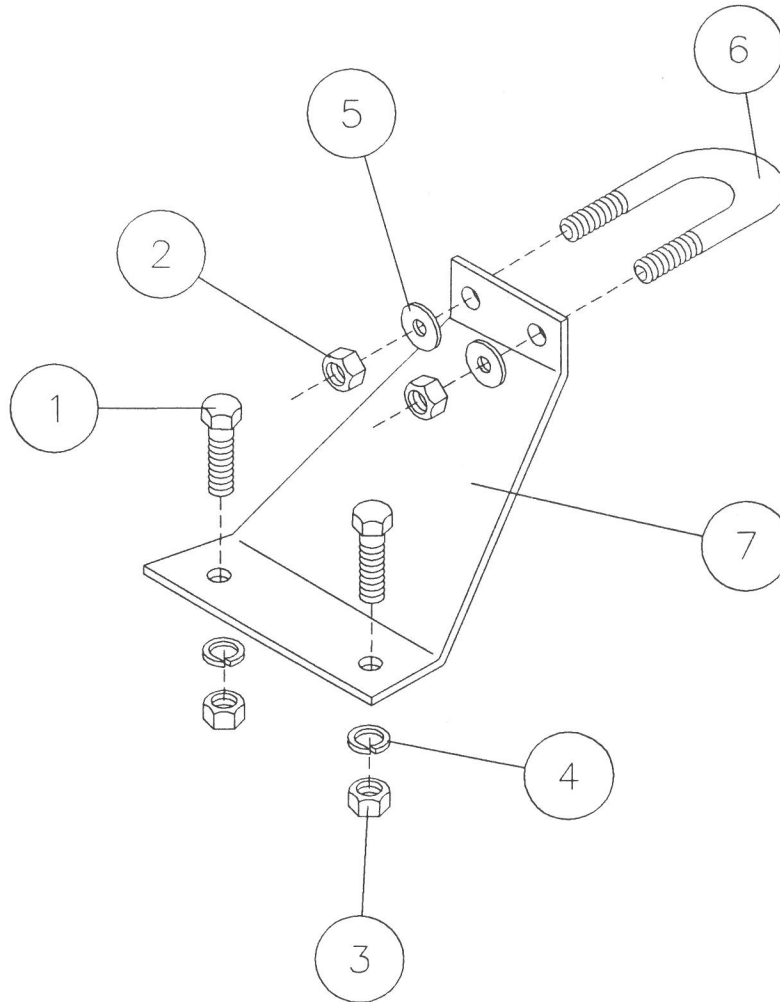
PARTS IDENTIFICATION



6000-051 AIR ROW UNIT SUB ASSEMBLY

Key	Qty	Part No.	Description
1	1	6000-366	Inside Scraper, Drilled
2	2	2530-107	1/4 x 3/4 Roll Pin, Black
3	2	2520-201	5/16-18 Hex Nut ZP
4	2	2525-201	5/16 Med. Lockwasher
5	1	2570-032	Coulter Shield
6	2	2505-206	5/16-18 x 1 Car. Bit. Gr. 5 ZP
7	1	6000-210	Lower Parallel Arm W.A.
8	1	6000-333	Pull Angle R.H.
9	1	6000-334	Pull Angle L.H.
10	2	6000-331	Parallel Arm
11	8	2520-459	5/8-11 Lock Hex Nut ZP
12	8	6000-335	Bushing (Parallel Arm)
13	10	2526-453	5/8 SAE Flatwasher ZP
14	6	2502-331	5/8-11 x 1 3/4 HHCS Gr. 5 ZP
15	1	6000-200	Lower Main Frame W.A.
16	2	2526-251	3/8 Std. Flatwasher ZP
17	1	2502-244	3/8-16 x 1 1/4 HHCS Gr. 5 ZP
18	1	2525-251	3/8 Med. Lockwasher
19	1	2555-137	Wheel Arm Stop Casting
20	2	2502-332	5/8-11 x 2 1/4 HHCS Gr. 5 ZP
21	2	6000-336	Pivot Bushing

PARTS IDENTIFICATION



1467

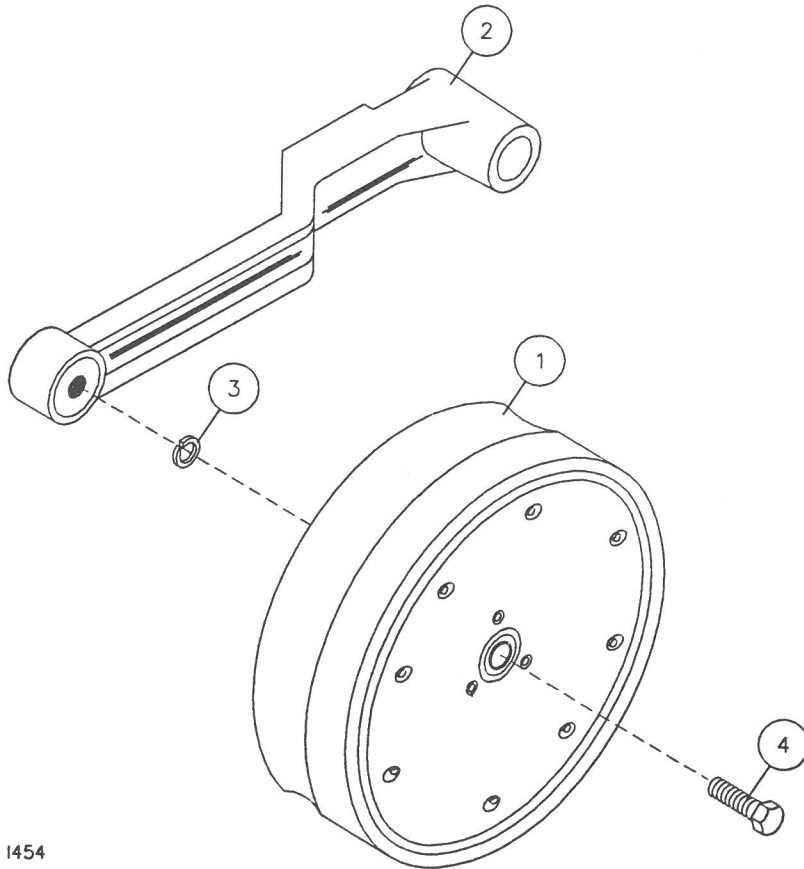
6000-197 SEED TUBE HOLDER KIT

Key	Qty	Part No.	Description
1	2	2502-237	3/8-16 x 1 HHCS Gr. 5 ZP
2	2	2520-152	1/4-20 Lock Hex Nut ZP
3	2	2520-251	3/8-16 Hex Nut ZP
4	2	2525-251	3/8 Med. Lockwasher
5	2	2526-151	1/4 Standard Flatwasher ZP
6	1	2570-582	U-Bolt, 1/4 x 1 x 1 3/4, ZP
7	1	6000-713	Seed Tube Holder

PARTS IDENTIFICATION

6000-527 GAUGE ARM & WHEEL ASSEMBLY

Key	Qty	Part No.	Description
1	1	2570-750	4.5 x 16 Nylon Gauge Wheel 40M
2	1	6000-528	Gauge Wheel Arm
3	1	2525-451	5/8 Med. Lockwasher
4	1	2502-325	5/8-11 x 3 HHCS Gr. 5 ZP

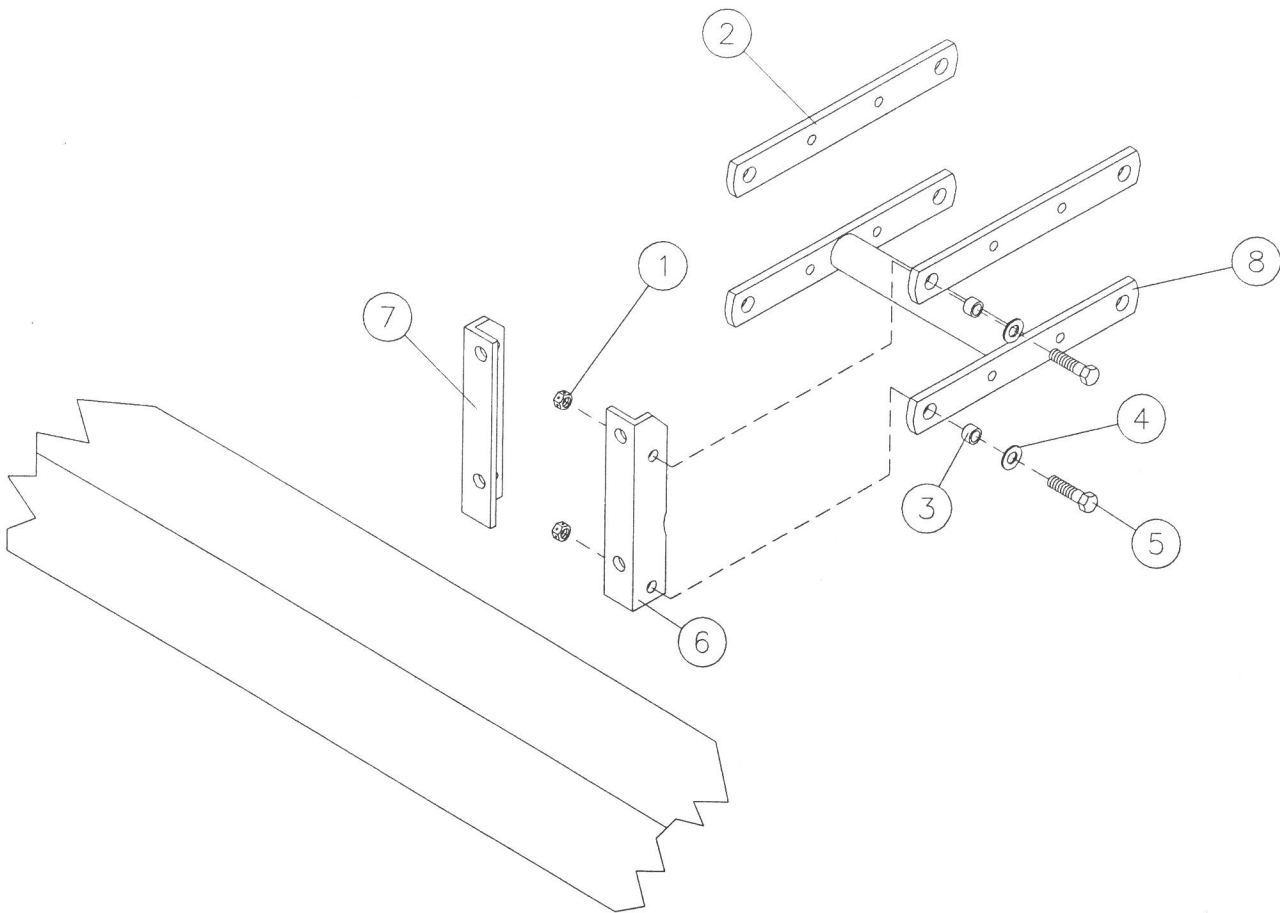


1454

PARTS IDENTIFICATION

PARALLEL ARMS AND PULL ANGLES

Key	Qty	Part No.	Description
1	8	2520-459	5/8-11 Lock Hex Nut ZP
2	2	6000-331	Parallel Arm
3	8	6000-335	Bushing
4	8	2526-453	5/8 SAE Flatwasher ZP
5	8	2502-320	5/8-11 x 1 3/4 HHCS GR. 2 ZP
6	1	6000-334	Pull Angle, L.H.
7	1	6000-333	Pull Angle, R.H.
8	1	6000-210	Lower Parallel Arm W.A.

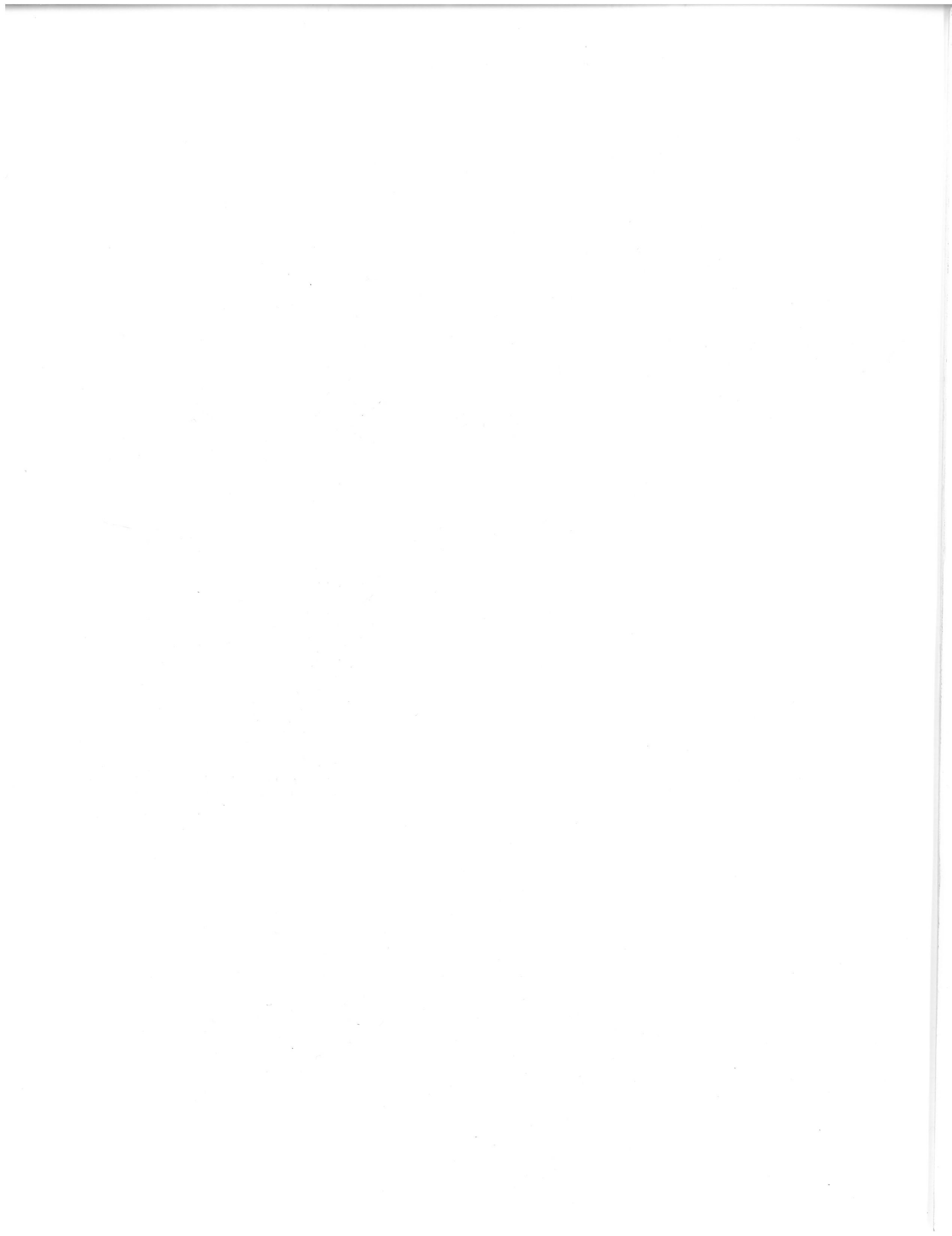


1479

NOTES

NOTES

NOTES



Our name Is getting known

Just a few years ago, Yetter products were sold primarily to the Midwest only. Then we embarked on a program of expansion and moved into the East, the South, the West, and now north into Canada. We're even getting orders from as far away as Australia and Africa.

So, when you buy Yetter products . . . you're buying a name that's recognized. A name that's known and respected. A name that's become a part of American agriculture and has become synonymous with quality and satisfaction in the field of conservation tillage.

Thank you

YETTER MANUFACTURING CO.
Colchester, IL 62326-0358 • 309/776-4111
Toll Free 800/447-5777
309/776-3222 (Fax)

