



2961-012
CUT AND FEED™
COULTER/FERTILIZER
OPERATORS & PARTS MANUAL
2565-730_REV_C – 11/16



YETTER MANUFACTURING CO.
FOUNDED 1930

Colchester, IL 62326-0358
Toll free: 800/447-5777
309/776-3222 (Fax)
Website: www.yetterco.com
E-mail: info@yetterco.com

YETTER

FOREWORD

You've just joined an exclusive but rapidly growing club.

For our part, we want to welcome you to the group and thank you for buying a Yetter product.

We hope your new Yetter products will help you achieve both goals-increase your productivity and increase your efficiency so that you may generate more profit.

This operator's manual has been designed into four major sections: Foreword, Safety Precautions, Installation Instructions and Parts Breakdown.



This **SAFETY ALERT SYMBOL** indicates important safety messages in the manual. When you see this symbol, be alert to the possibility of **PERSONAL INJURY** and carefully read the message that follows.

The word **NOTE** is used to convey information that is out of context with the manual text. It contains special information such as specifications, techniques and reference information of a supplementary nature.

The word **IMPORTANT** is used in the text when immediate damage will occur to the machine due to improper technique or operation. Important will

apply to the same information as specified by note only of an immediate and urgent nature.

It is the responsibility of the user to read the operator's manual and comply with the safe and correct operating procedure and to lubricate and maintain the product according to the maintenance schedule in the operator's manual.

The user is responsible for inspecting his machine and for having parts repaired or replaced when continued use of the product would cause damage or excessive wear to the other parts.

It is the user's responsibility to deliver his machine to the Yetter dealer who sold him the product for service or replacement of defective parts, which are covered by the warranty policy.

If you are unable to understand or follow the instructions provided in this publication, consult your local Yetter dealer or contact:

YETTER MANUFACTURING CO.

309/776-4111

800/447-5777

309/776-3222 (FAX)

Website: www.yetterco.com

E-mail: info@yetterco.com

WARRANTY

Yetter Manufacturing warrants all products manufactured and sold by it against defects in material. This warranty being expressly limited to replacement at the factory of such parts or products as shall appear to be defective after inspection. This warranty does not obligate the Company to bear cost of labor in replacement of parts. It is the policy of the Company to make improvements without incurring obligations to add them to any unit already sold. No warranty is made or authorized to be made, other than herein set forth. This warranty is in effect for one year after purchase.

Dealer _____

Yetter Manufacturing warrants its own products only and cannot be responsible for damages to equipment on which mounted.

SAFETY PRECAUTIONS

A brief description of signal words that may be used in this manual:

CAUTION: Used as a general reminder of good safety practices or to direct attention to unsafe practices.

WARNING: Denotes a specific potential hazard.

DANGER: Denotes the most serious specific potential hazard.



CAUTION

Consult your implement and tractor operator's manual for correct and safe operating practices. Be aware of towed implement width and allow safe clearance.



CAUTION: SAFETY SIGNS

Safety decals are placed on the implement to alert the operator and others to the risk of personal injury or unsafe operation during normal operations and servicing.

1. The safety decals must be kept clean and in good condition to ensure that they are legible.
2. Safety decals must be replaced if they are missing or illegible.
3. When components are replaced during repair or servicing, check that the new components include the necessary safety signs.
4. Replacement safety decals may be obtained from your local dealer.



WARNING

Read these instructions carefully to acquaint yourself with the Equipment. Working with unfamiliar equipment can lead to accidents.

Never park the equipment on a steep incline or leave the equipment running unattended.

Never clean, lubricate or adjust a machine that is in motion.

Always check that straps are secure.

Make sure latches are in pinned position when moving equipment.

Do not allow children to operate this equipment.

Do not allow riders on the equipment, trailer and/or pick-up.

Use speed and caution dictated by the terrain being traversed. Do not operate on any slope steep enough to cause tipping or loss of control.

Read and understand the operator's manual and require all other persons who will operate the equipment to do the same.

If operating on public roadways, where legal, be certain all lighting is operating properly and observe all traffic laws.

Beware of increased stopping distances and control effort when operating with implements attached.

Be familiar with all controls and be prepared to stop equipment quickly in an emergency.

FAILURE TO HEED MAY RESULT IN PERSONAL INJURY OR DEATH.

GENERAL INFORMATION

The 2961 CUT-N-FEED™ can be used as a R.H. opener or a L.H. opener, it is recommended that half of the planter is R.H. assemblies and the other half if L.H. assemblies.

NOTE: The 2961 CUT-N-FEED™ is NOT recommended for use in rocky conditions as the coulter arm and fertilizer tube are susceptible to bending.

For proper operation of the 2961 CUT-N-FEED™, a 1/4" NPT "Straight Stream" nozzle or a 1/4" NPT Female "Nozzle Body" with orifice plates will be required. Yetter Manufacturing Co. does not supply these parts.

TABLE OF CONTENTS

Cover Page.....	pg. 1
Foreword.....	pg. 2
Safety Symbols and meanings.....	pg. 3
Table of Contents.....	pg. 4
Torque Specifications.....	pg. 5
Operation.....	pg. 6
Adjustments.....	pg. 7
Installation Instructions.....	pg. 8-14
Liquid Fertilizer Application Rate & Pressure Chart.....	pg. 15
Maintenance.....	pg. 16-21
Parts Identification.....	pg. 22-25
Trouble Shooting.....	pg. 26-27

Several different styles of blades are available for every tillage practice, every soil type, and every residue condition, so you can choose the one that's right for you.

		BLADE CHOICE		
		SMOOTH (S)	13 WAVE (SW)	25 WAVE (MW)
FACTOR				
SIZE	13"		X	X
	14"	X		
AGGRESSIVE	LOW	X		
	MEDIUM			
	HIGH		X	X
SPEED	SLOW			X
	NORMAL	X	X	X
	FAST	X		
SOIL CONDITION	DRY	X	X	X
	DAMP/STICKY	X		
	SANDY		X	X
	HEAVY		X	X

BOLT TORQUE

Mounting bolts and hardware

Before operating the 2961 CUT-N-FEED™ for the first time, check to be sure that all hardware is tight. Check all hardware again after approximately 50 hours of operation and at the beginning of each planting season.

All hardware used on the 2961 CUT-N-FEED™ is Grade 5 unless otherwise noted. Grade 5 cap screws are marked with three radial lines on the head. If hardware must be replaced, be sure to replace it with hardware of equal size, strength and thread type. Refer to the torque values chart when tightening hardware.



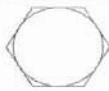



Important: Over tightening hardware can cause as much damage as when under tightening. Tightening hardware beyond the recommended range can reduce its shock load capacity.

The chart below is a guide for proper torque. Use it unless a specified torque is called out elsewhere in the manual.

Torque is the force you apply to the wrench handle or the cheater bar, times the length of the handle or bar.

Use a torque wrench whenever possible.

The following table shows torque in ft. lbs. for coarse thread hardware.

BOLT DIA. AND THREADS PER INCH		 OR 	
	GRADE 2	GRADE 5 A-325	GRADE 8
1/4	6	10	14
5/16	12	20	30
3/8 - 16	25	35	50
7/16 - 14	35	55	80
1/2 - 13	55	85	125
9/16 - 12	75	125	175
5/8 - 11	105	170	235
3/4 - 10	185	305	425
7/8 - 9	170	445	690
1-8	260	670	1030
1 1/8 - 7	365	900	1460
1 1/4 - 7	515	1275	2060
1 3/8 - 6	675	1675	2700
1 1/2 - 6	900	2150	3500
1 3/4 - 5	1410	3500	5600

Lubricate all bearings and moving parts as assembled and make certain that they work freely.



WARNING: Never work around the toolbar/implement while in a raised position without using safety lockups.



CAUTION: The 2961 CUT-N-FEED™ is very heavy. Pay extra attention to lifting techniques while handling and or maneuvering the opener during assembly. Failure to do so may lead to personal injury.

OPERATION PRECAUTIONS

STOP

Read this before using the Yetter product.

- MACHINE OPERATION

IMPORTANT: failure to properly set the planter frame height and levelness can result in less than successful operation of the planter and the Yetter product and may result in damaged equipment. All operators should read and thoroughly understand the instructions given prior to using the Yetter product.

NOTE: **DO NOT** use this product if the planter is not adjusted properly!

Leveling the planter:

With the planter lowered to proper operating height (**Usually 20"-22"**).

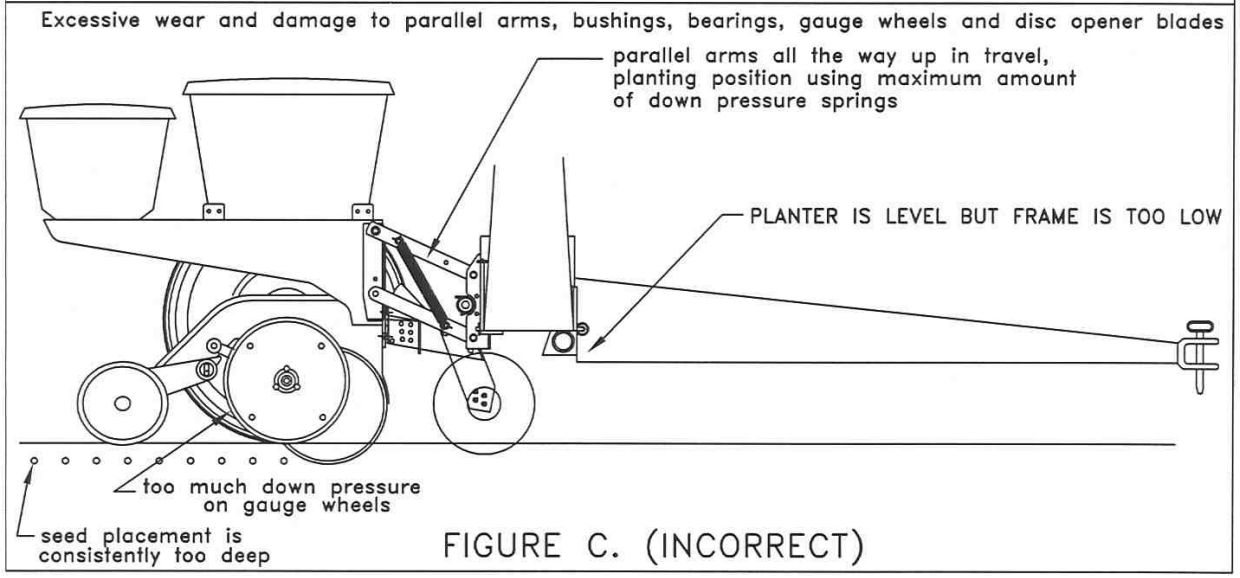
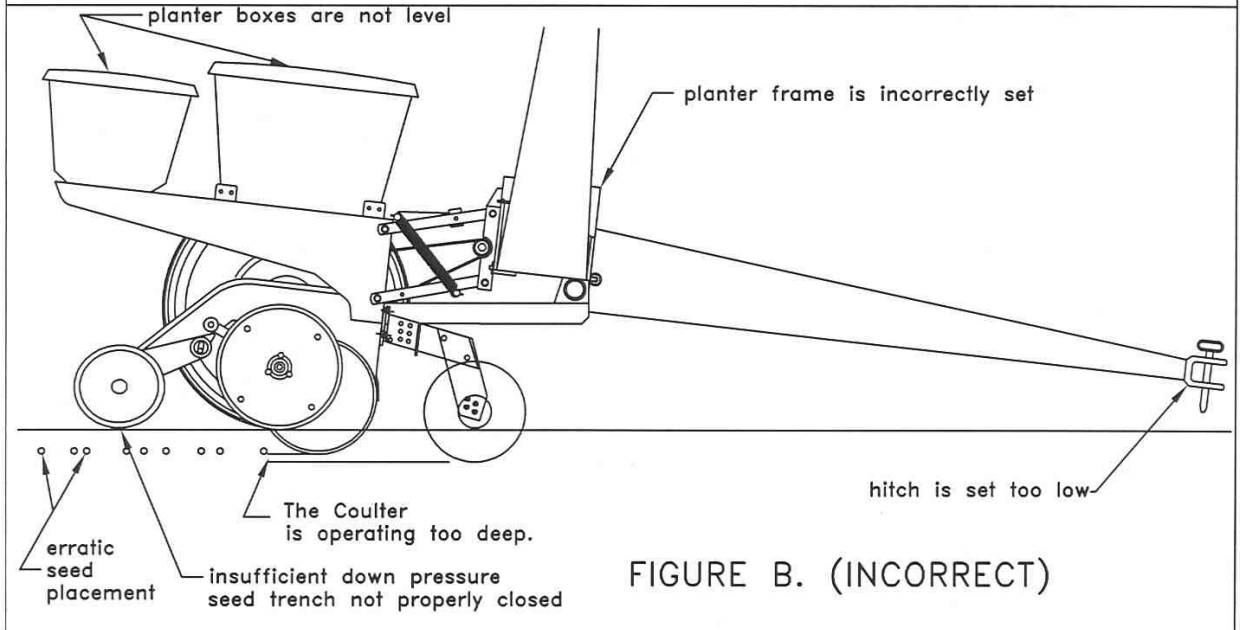
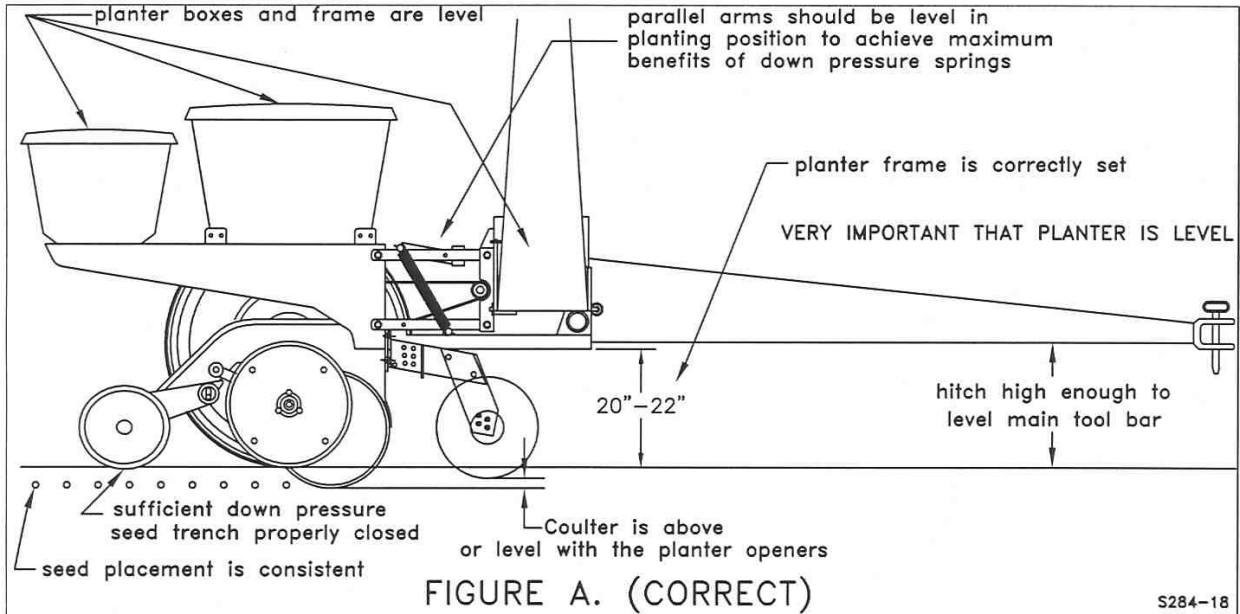
Read the planter operator's manual for recommended setting. Check to be sure the toolbar and row unit parallel arms are level fore and aft. **Re-check** when the planter is in the **field** and has been **fully loaded** with seed, fertilizer, granular chemicals, etc. Also, a field check with a bubble level on the frame should be made of the hitch height to ensure level operation front to back.

It is important for the planter to operate level laterally. Tire pressure must be maintained at pressures specified by the manufacturer.

Field and actual planting conditions change and will dictate planter frame heights. You must ensure that the row unit parallel arms are approximately parallel with the ground.

IMPORTANT: For proper operation of the planter attachments and row units, it is imperative that the planter toolbars and row unit parallel arms be level side-to-side and front-to-rear. The toolbar frame should operate at a 20"-22" height from the **planting surface**. Check the manufacturer's operator's manual for instructions on how to adjust the frame height and levelness.

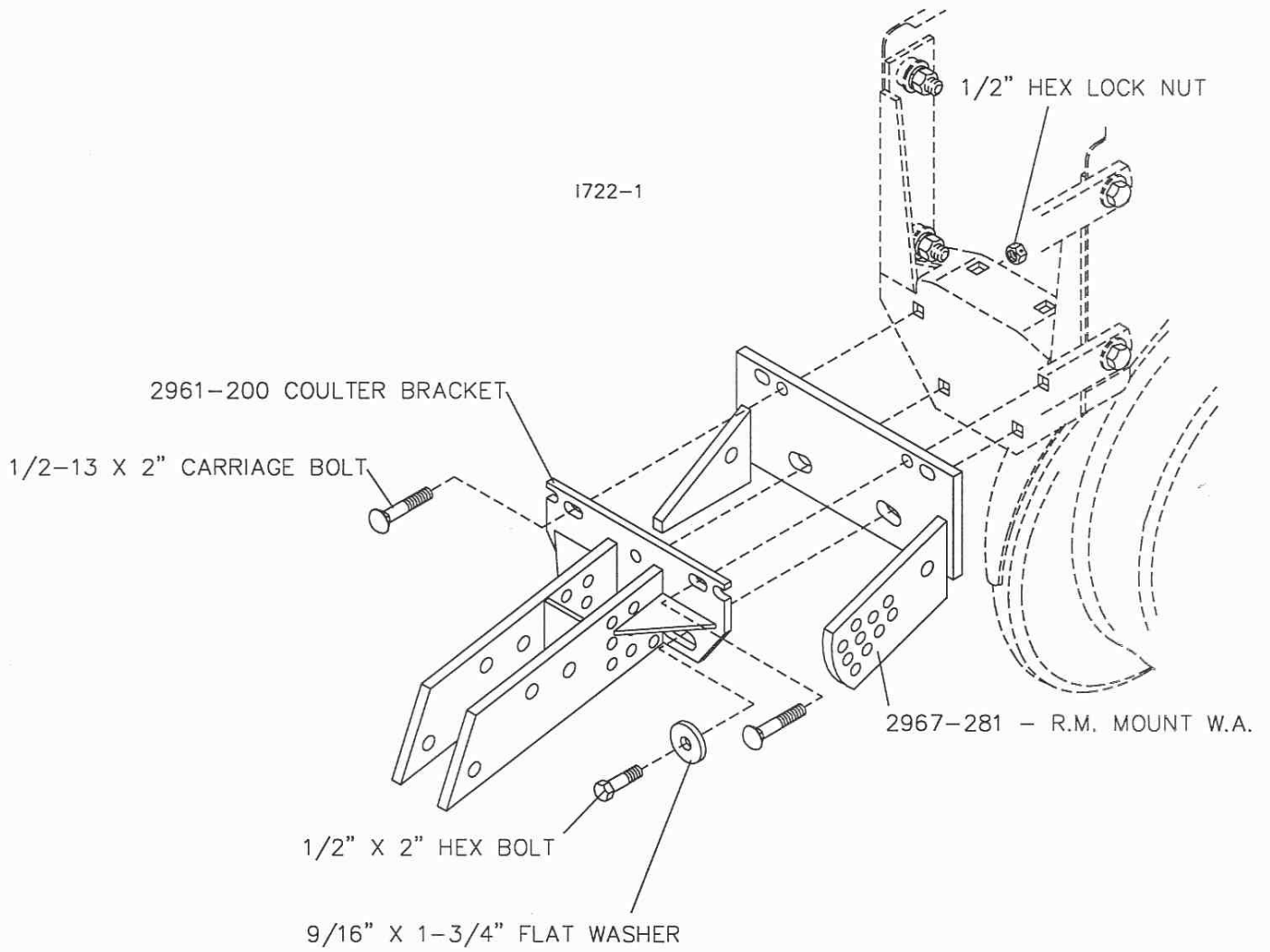
PLANTER ADJUSTMENT



ASSEMBLY INSTRUCTIONS

2961 – CUT AND FEED™

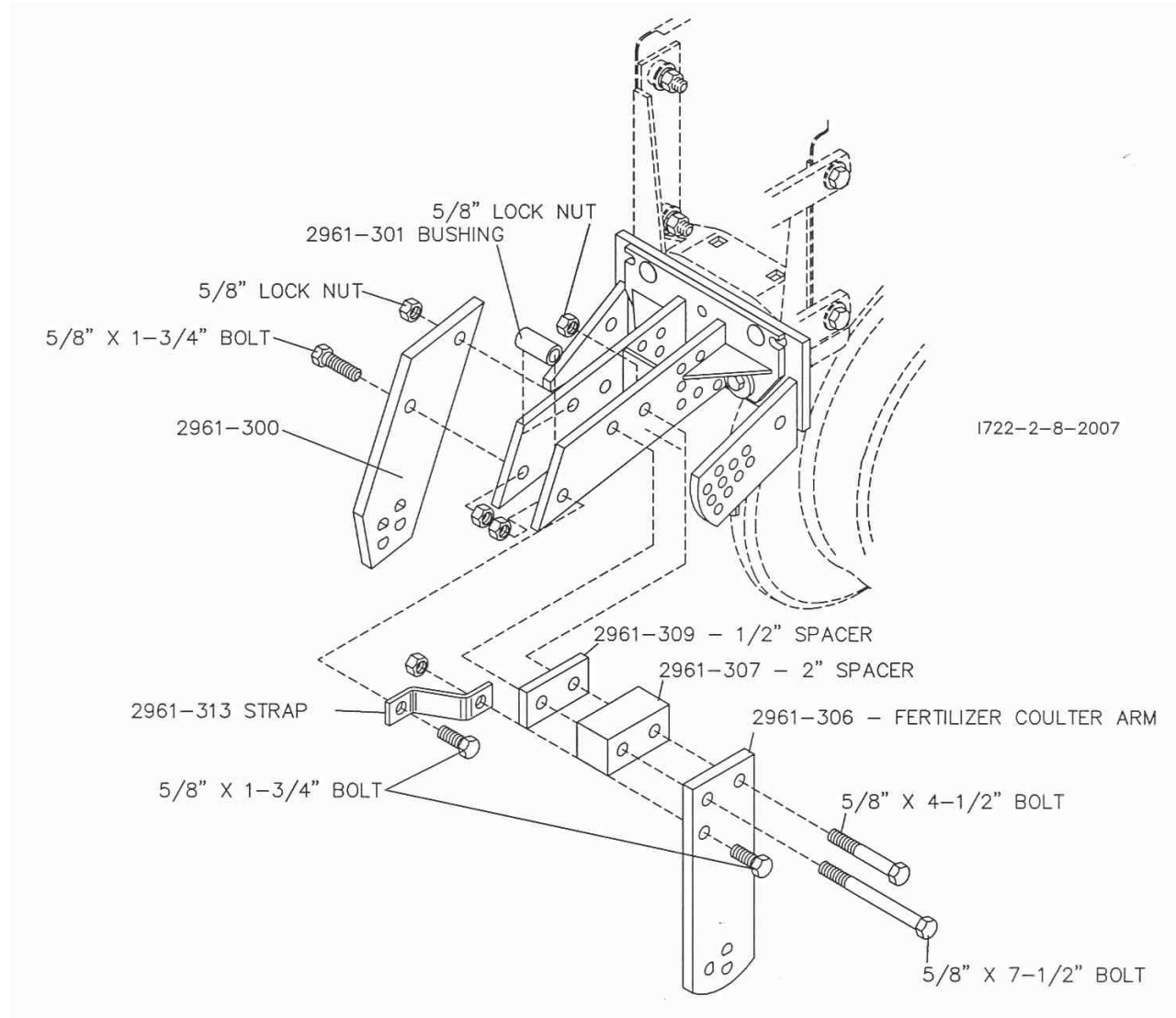
STEP 1. Attach the 2967-281 mount bracket and the 2961-200 Coulter Bracket to the planter row unit, using 2) 1/2" x 2" carriage bolts and 1) 1/2" x 2" hex bolt, flat washer, and lock nuts.



ASSEMBLY INSTRUCTIONS

2961 – CUT AND FEED™

STEP 2. Coulters can be assembled as right hand or left hand units. Attach the 2961-300 coulters arm and the 2961-306 fertilizer coulters arm to the 2961-200 coulters bracket using the 5/8" x 7-1/2" bolt, 2961-307 2" spacer, 2961-309 1/2" spacer (optional), 2961-301 spacer bushing and 5/8" lock nut. Also, on the 2961-306-fertilizer arm use the 5/8" x 4-1/2" bolt and lock nut. On the 2961-300-coulters arm use the 5/8" x 1-3/4" bolt and lock nut.

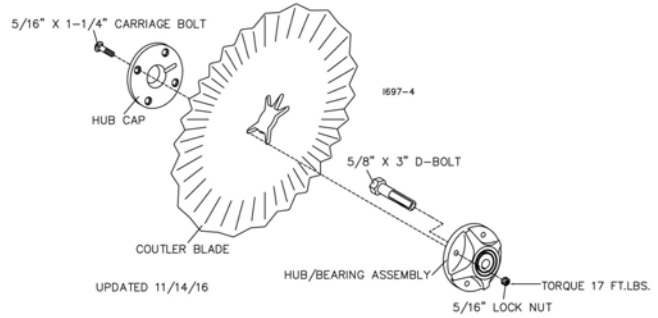
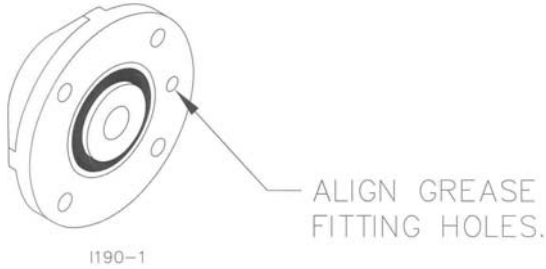


ASSEMBLY INSTRUCTIONS

2961 – CUT AND FEED™

STEP 3. Assemble the 5/8" x 3" d-bolt onto the hub/bearing. Now attach the blade and hub cap to the hub/bearing assembly using 4) 5/16" x 1-1/4" carriage bolts and lock nuts.

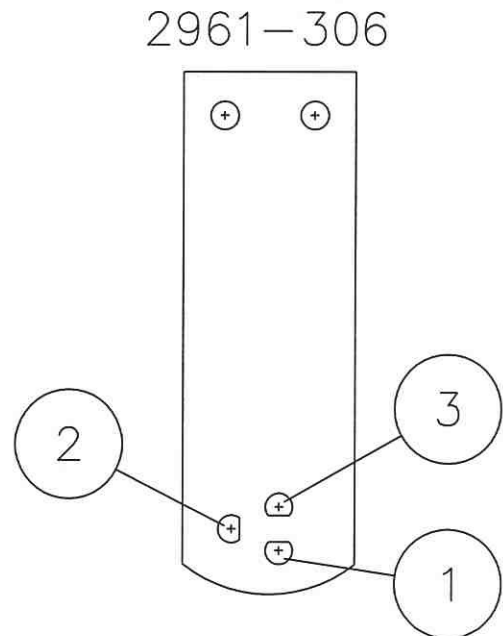
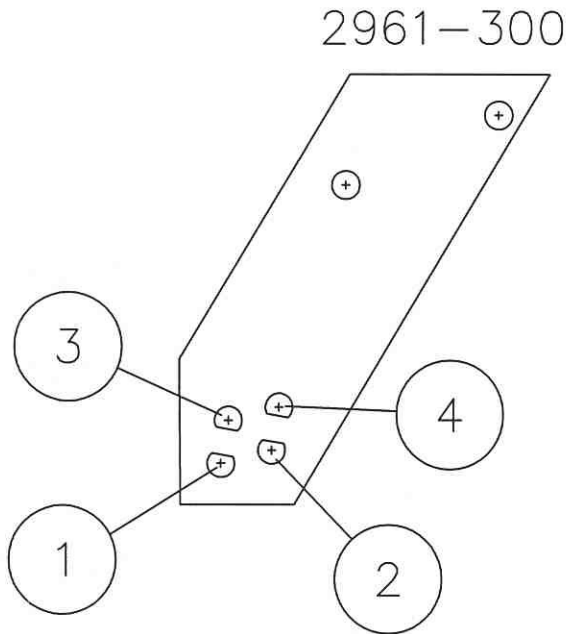
NOTE: When assembling the blade, hubcap and bearing hub, be sure the slot in the blade is in alignment with small hole in bearing hub and groove on inside of hubcap.



STEP 4. Determine the depths that the coulters blades need operated. Use the chart below to determine the hole location that the coulters blade needs to be assembled into. NOTE: The coulters blade depths are compared to a **level** planter with 15" opener blades.

	2961-300	
BLADE DIA.	13" BLADE	14" BLADE
HOLE LOCATION		
1	EVEN WITH	1/2" BELOW
2	1/2" ABOVE	EVEN WITH
3	1" ABOVE	1/2" ABOVE
4	1-1/2" ABOVE	1" ABOVE

	2961-306	
BLADE DIA.	13" BLADE	14" BLADE
HOLE LOCATION		
1	1' BELOW	1-1/2" BELOW
2	1/2" BELOW	1" BELOW
3	EVEN WITH	1/2" BELOW

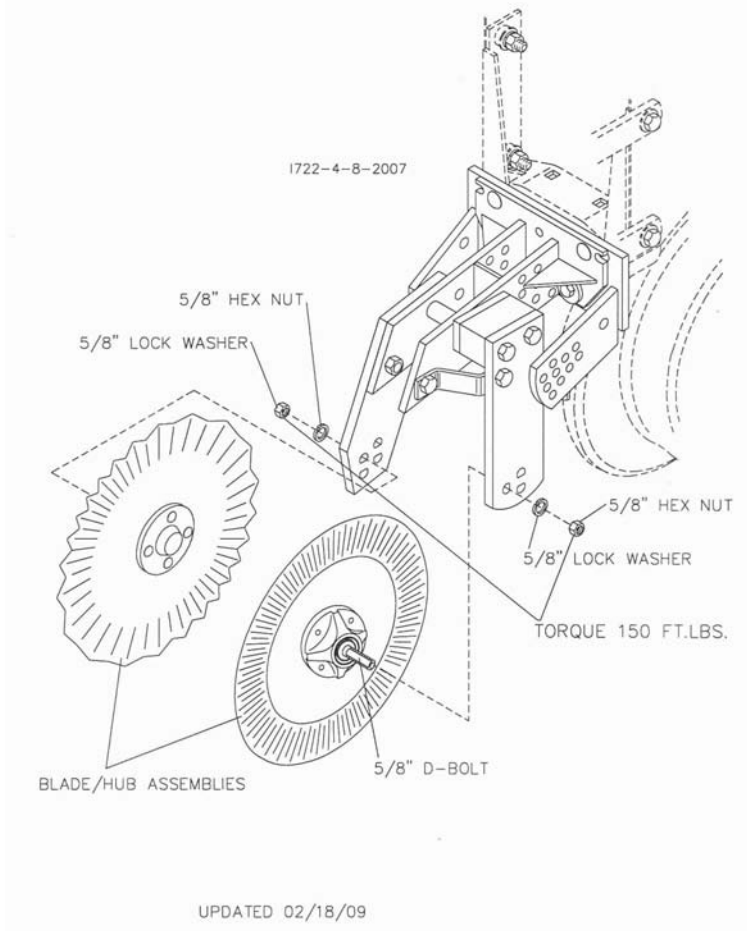


1722-3

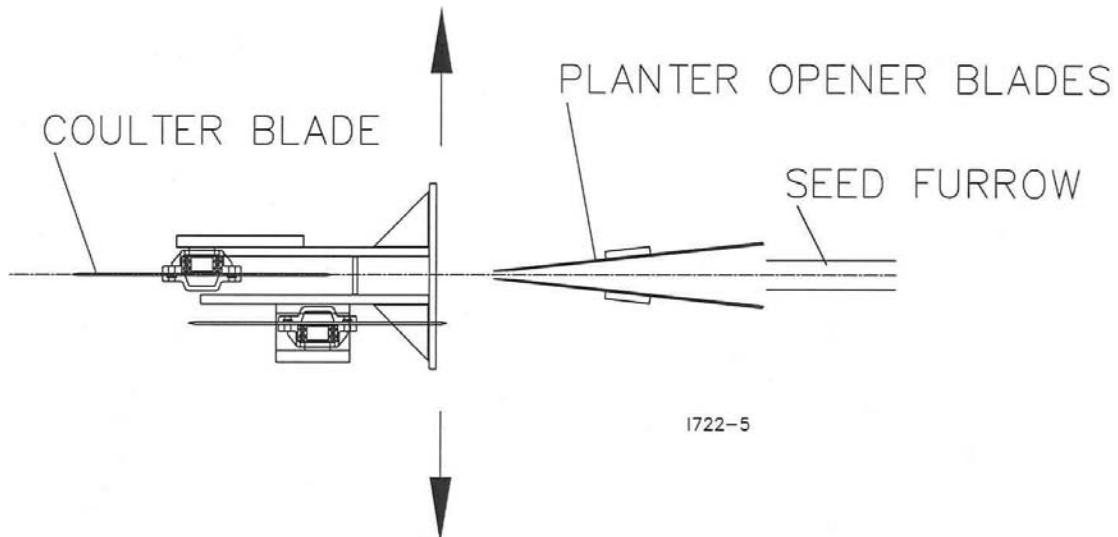
ASSEMBLY INSTRUCTIONS

2961 – CUT AND FEED™

STEP 5. Attach the blade/hub assembly to the coultter arm using the 5/8" x 3" d-bolt, lock washer and hex nut. Torque 150 ft.lbs.



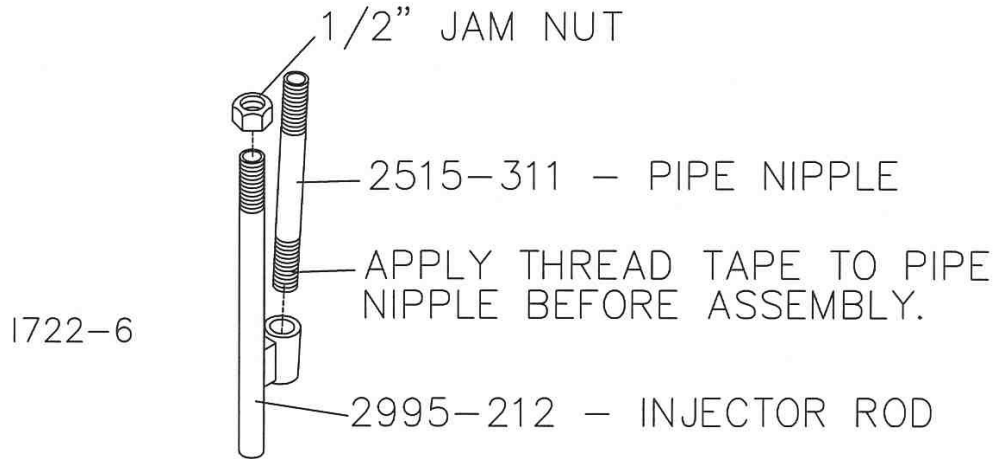
STEP 6. Laterally align the coultter blades with the planter opener blades. Tighten the bolts securing the 2961-200 bracket to the planter. Torque to 90 ft. lbs.



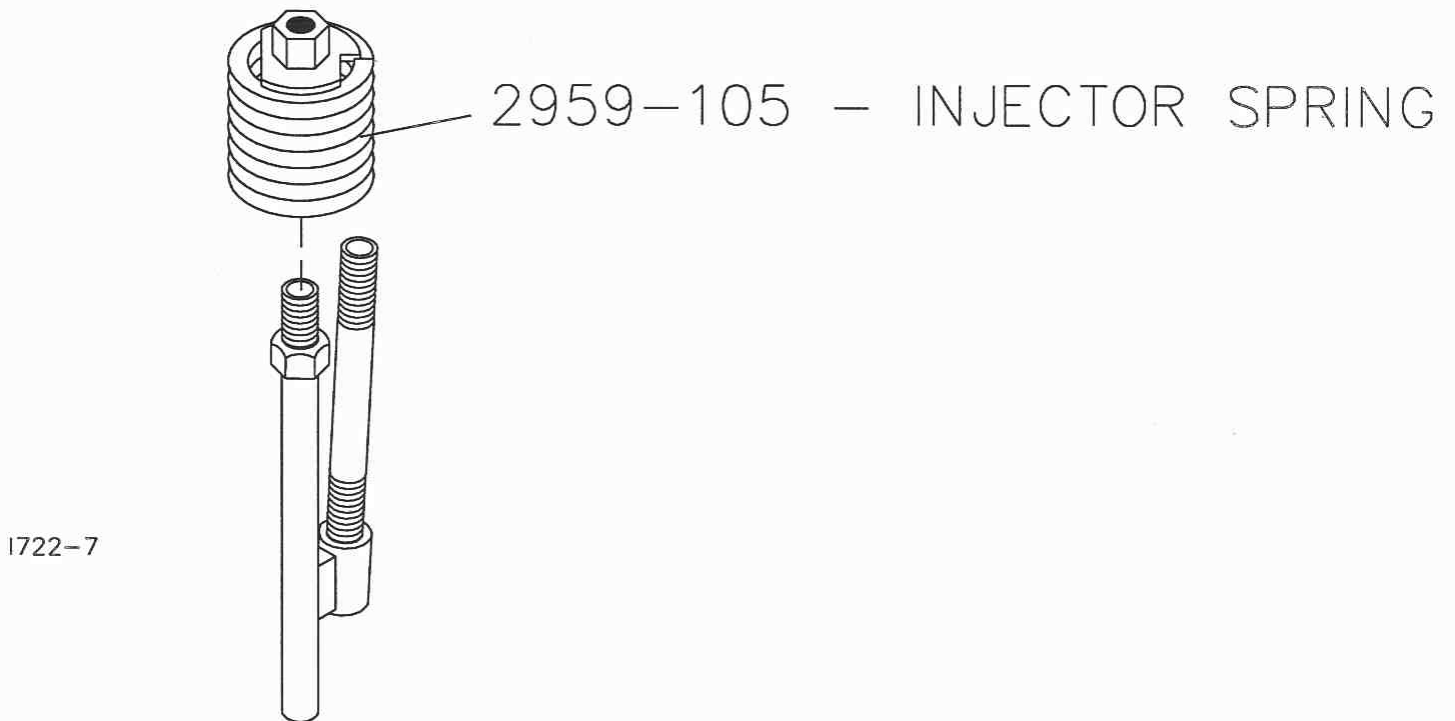
ASSEMBLY INSTRUCTIONS

2961 – CUT AND FEED™

STEP 7. Apply thread tape to the 2515-311 Pipe Nipple. Attach the pipe nipple to the 2995-212 Injector Rod. Fully thread the 2520-356 1/2" jam nut onto the injector rod.



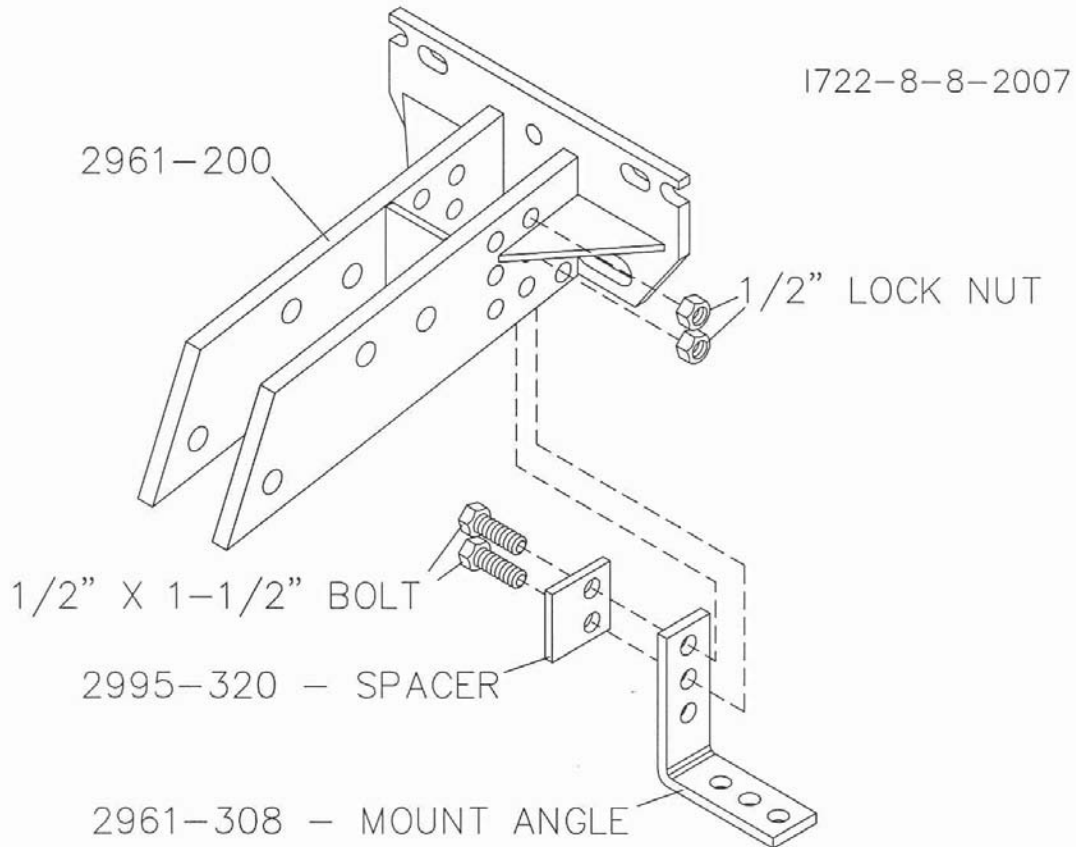
STEP 8. Attach the 2959-105 Injector Spring assembly to the Injector Rod, secure the spring to the rod with the 1/2" jam nut.



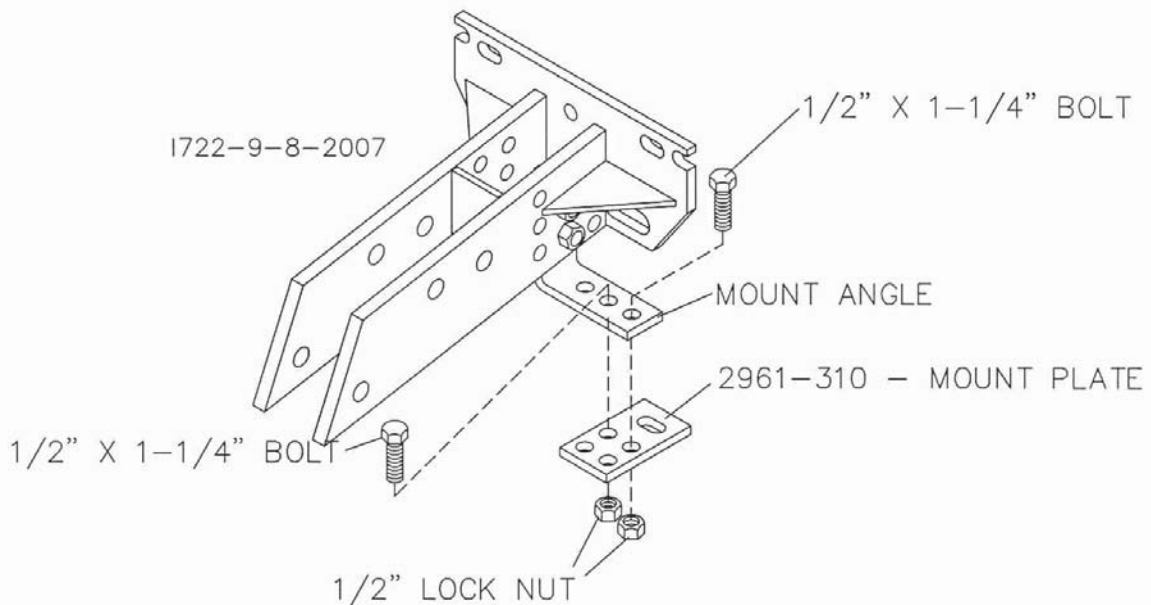
ASSEMBLY INSTRUCTIONS

2961 – CUT AND FEED™

STEP 9. Attach the 2961-308 Injector Mount Angle to the 2961-200 Coultter Bracket using the 2) 1/2" x 1-1/2" bolts, 2995-320 Spacer and 1/2" lock nuts.



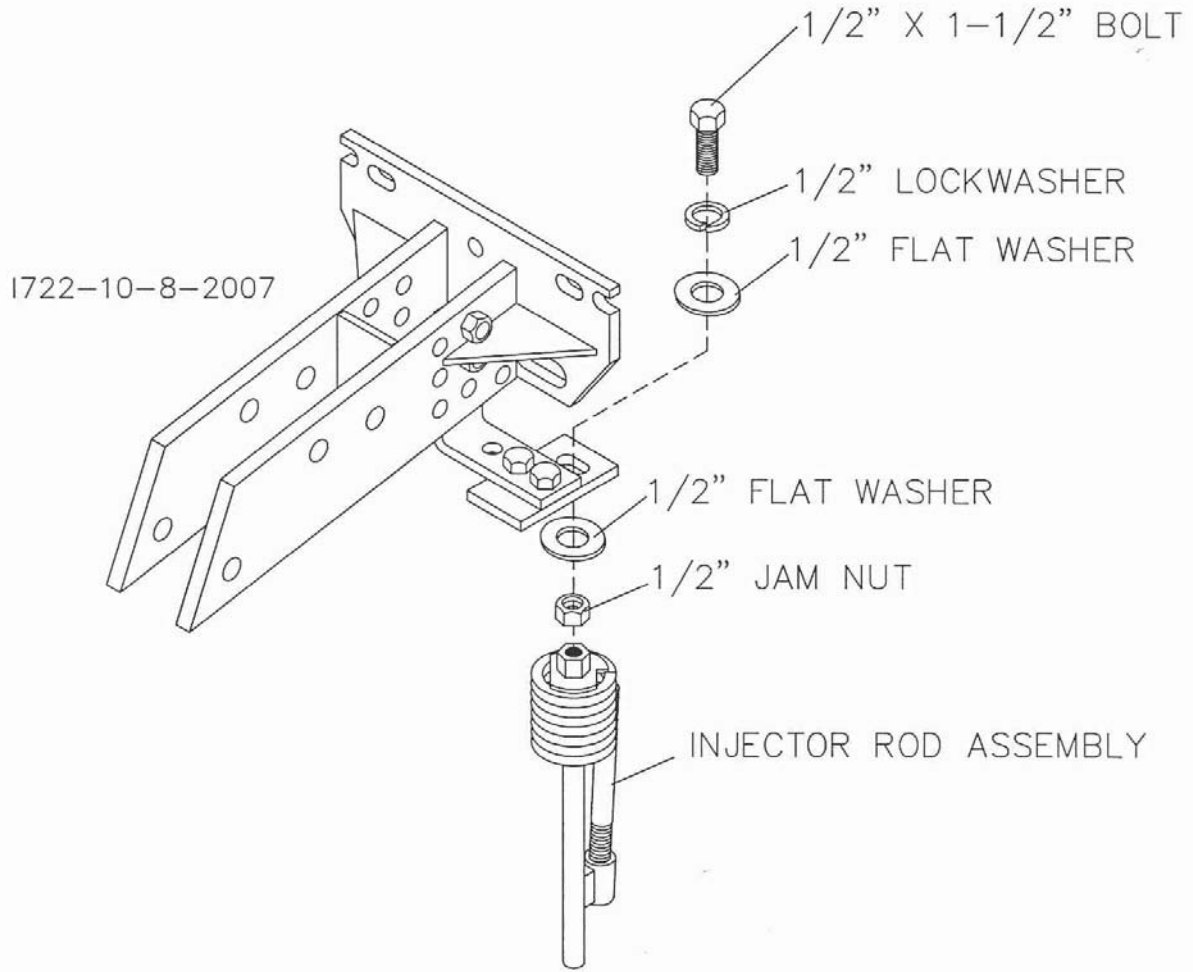
STEP 10. Attach the 2961-310 Injector Mount Plate to the Injector Mount Angle using the 2) 1/2" x 1-1/4" bolts and lock nuts.



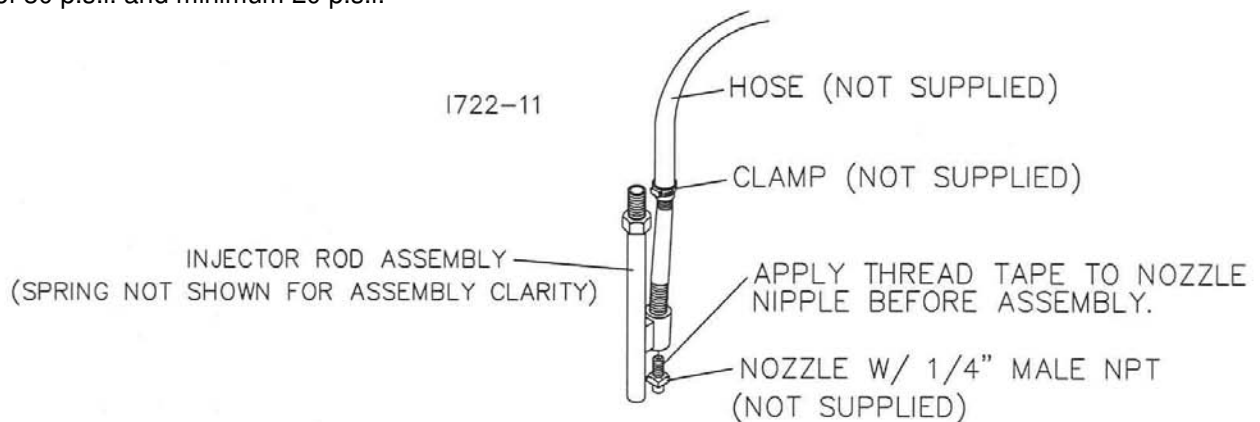
ASSEMBLY INSTRUCTIONS

2961 – CUT AND FEED™

STEP 11. Attach the Injector Rod Assembly to the Mount Plate using the 1/2" x 1-1/2" bolt, lock washer, 2) 1/2" flat washers and 1/2" jam nut. Align the Injector Rod with the coultter blade then securely tighten all hardware.



STEP 12. At the pipe coupler on the Injector Rod install the injector tip (NOT SUPPLIED). Injector tips can be ordered through an implement dealer or fertilizer equipment dealer. Also install the hose clamp and fertilizer hose to the pipe nipple. Calibrate the fertilizer pump and tips to maximum recommended pressure of 30 p.s.i. and minimum 20 p.s.i.



LIQUID FERTILIZER APPLICATION RATE AND PRESSURE CHART

TABLES ARE BASED ON 30" NOZZLE SPACING

TIP #	LIQUID PRESSURE IN PSI	CAPACITY 1 NOZZLE IN GPM	GALLONS PER ACRE (USING WATER)					
			4 MPH H2O	5 MPH H2O	5.5 MPH H2O	6 MPH H2O	7 MPH H2O	8 MPH H2O
#00015	20	0.11	5.45	4.36	3.96	3.63	3.11	2.72
	25	0.12	5.94	4.75	4.32	3.96	3.39	2.97
	30	0.13	6.44	5.15	4.68	4.29	3.68	3.22
	40	0.15	7.43	5.94	5.40	4.95	4.24	3.71
	50	0.17	8.42	6.73	6.12	5.61	4.81	4.21
	60	0.18	8.91	7.13	6.48	5.94	5.09	4.46
#0002	20	0.14	6.93	5.54	5.04	4.62	3.96	3.47
	25	0.16	7.92	6.34	5.76	5.28	4.53	3.96
	30	0.17	8.42	6.73	6.12	5.61	4.81	4.21
	40	0.20	9.90	7.92	7.20	6.60	5.66	4.95
	50	0.23	11.39	9.11	8.28	7.59	6.51	5.69
	60	0.25	12.38	9.90	9.00	8.25	7.07	6.19
#0003	20	0.21	10.40	8.32	7.56	6.93	5.94	5.20
	25	0.24	11.88	9.50	8.64	7.92	6.79	5.94
	30	0.26	12.87	10.30	9.36	8.58	7.35	6.44
	40	0.30	14.85	11.88	10.80	9.90	8.49	7.43
	50	0.34	16.83	13.46	12.24	11.22	9.62	8.42
	60	0.37	18.32	14.65	13.32	12.21	10.47	9.16
#0004	20	0.28	13.86	11.09	10.08	9.24	7.92	6.93
	25	0.32	15.84	12.67	11.52	10.56	9.05	7.92
	30	0.35	17.33	13.86	12.60	11.55	9.90	8.66
	40	0.40	19.80	15.84	14.40	13.20	11.31	9.90
	50	0.45	22.28	17.82	16.20	14.85	12.73	11.14
	60	0.49	24.26	19.40	17.64	16.17	13.86	12.13
#0005	20	0.35	17.33	13.86	12.60	11.55	9.90	8.66
	25	0.40	19.80	15.84	14.40	13.20	11.31	9.90
	30	0.43	21.29	17.03	15.48	14.19	12.16	10.64
	40	0.50	24.75	19.80	18.00	16.50	14.14	12.38
	50	0.56	27.72	22.18	20.16	18.48	15.84	13.86
	60	0.61	30.20	24.16	21.96	20.13	17.25	15.10
#0006	20	0.42	20.79	16.63	15.12	13.86	11.88	10.40
	25	0.47	23.27	18.61	16.92	15.51	13.29	11.63
	30	0.52	25.74	20.59	18.72	17.16	14.71	12.87
	40	0.60	29.70	23.76	21.60	19.80	16.97	14.85
	50	0.67	33.17	26.53	24.12	22.11	18.95	16.58
	60	0.74	36.63	29.30	26.64	24.42	20.93	18.32
#0008	20	0.57	28.22	22.57	20.52	18.81	16.12	14.11
	25	0.63	31.19	24.95	22.68	20.79	17.82	15.59
	30	0.69	34.16	27.32	24.84	22.77	19.52	17.08
	40	0.80	39.60	31.68	28.80	26.40	22.63	19.80
	50	0.89	44.06	35.24	32.04	29.37	25.17	22.03
	60	0.98	48.51	38.81	35.28	32.34	27.72	24.26
#0010	20	0.71	35.15	28.12	25.56	23.43	20.08	17.57
	25	0.79	39.11	31.28	28.44	26.07	22.35	19.55
	30	0.87	43.07	34.45	31.32	28.71	24.61	21.53
	40	1.00	49.50	39.60	36.00	33.00	28.29	24.75
	50	1.12	55.44	44.35	40.32	36.96	31.68	27.72
	60	1.23	60.89	48.71	44.28	40.59	34.79	30.44
#0015	20	1.06	52.47	41.98	38.16	34.98	29.98	26.24
	25	1.19	58.91	47.12	42.84	39.27	33.66	29.45
	30	1.30	64.35	51.48	46.80	42.90	36.77	32.18
	40	1.50	74.25	59.40	54.00	49.50	42.43	37.13
	50	1.68	83.16	66.53	60.48	55.44	47.52	41.58
	60	1.81	89.60	71.68	65.16	59.73	51.20	44.80
ROW SPACING MULTIPLIER	10" X 3.3	15" X 2.0	18" X 1.66	20" X 1.5	36" X .83	38" X .79	40" X .75	

Values in this chart area based on using water. To calculate nozzle size required for your fertilizer application, the weight of the fertilizer solution must be accounted for by using a conversion factor for specific gravity. The Conversion factor for 28% liquid nitrogen is 1.13. Example: desired rate of application is 10 GPA of 28% N multiply 10 gallons per acre of fertilizer you want to apply x the conversion factor for 28% N (1.13) to get an equivalent rate for water. 10 x 1.13 refers to the chart for 11.13 gallons per acre at your desired speed/MPH.

GPA = $\frac{5940 \times \text{GPM}}{\text{MPH} \times \text{W}}$ **H2O = WATER** **SOLUTION FACTOR**
(Per Nozzle) **MPH = MILES PER HOUR** **GPA = GALLON PER ACRE** **28% = H2O/1.13**
GPM = GALLON PER MINUTES **32% = H2O/1.15**
W = WIDTH

This table is a reference only. Please calibrate your equipment to insure proper rate of application. The information contained in this issue is offered in good faith by Yetter Mfg. Co. to further the understanding of liquid fertilizer application.

However, the use of the information provided is beyond the control of Yetter Mfg. Co. and in no case shall Yetter Mfg. Co. or any seller of its products be responsible for any damages that may occur from the use of this information.

MAINTENANCE

BEARING ASSEMBLY AND LUBRICATION

NOTE: If you choose to leave the seal, then you need to fill the cavity with grease. If you choose to remove the seal, then you need to fill cavity and maintain the grease every 50 hours of use.

Practice Safety

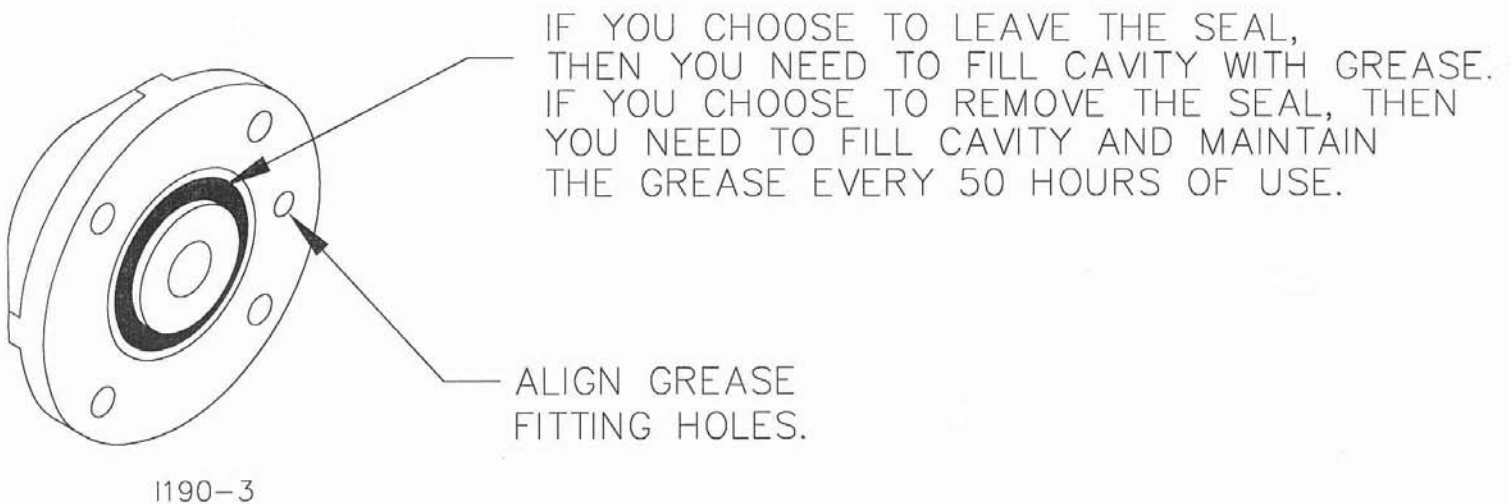
Understand and practice safe service procedures before doing work. Follow ALL the operating, maintenance and safety information in the equipment operator manual. Clear the area of bystanders, especially small children, when performing any maintenance or adjustments. Keep work area clean and dry. Use adequate lighting for the job. Use only tools, jacks and hoists of sufficient capacity for the job.

Never lubricate, service, or adjust machine while it is moving. Keep hands, feet, and clothing from power-driven moving and rotating parts. Disengage all power and operate controls to relieve pressure. Lower equipment to the ground and stop the engine. Remove the key. Wait for all moving parts to stop before servicing, adjusting, repairing or unplugging.

Securely support any machine elements with blocks or safety stands that must be raised for service work.

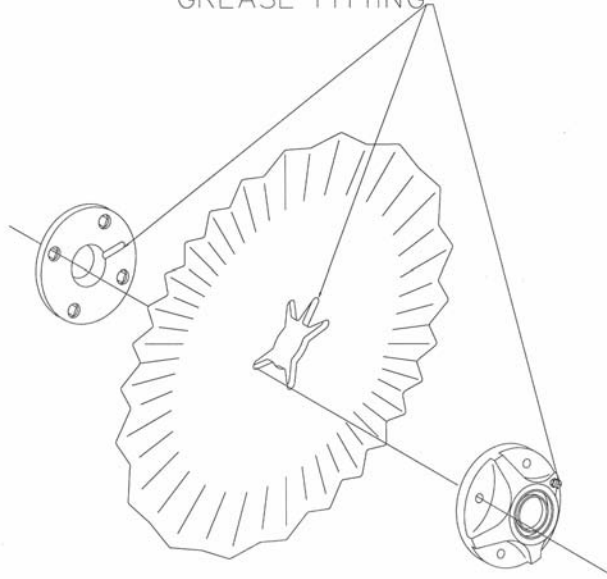
Keep all parts in good condition and properly installed. Fix damaged equipment immediately. Replace worn or broken parts. Remove any buildup of grease, oil, or debris. Make sure all guards are in place and properly secured when maintenance work is completed.

Assembly



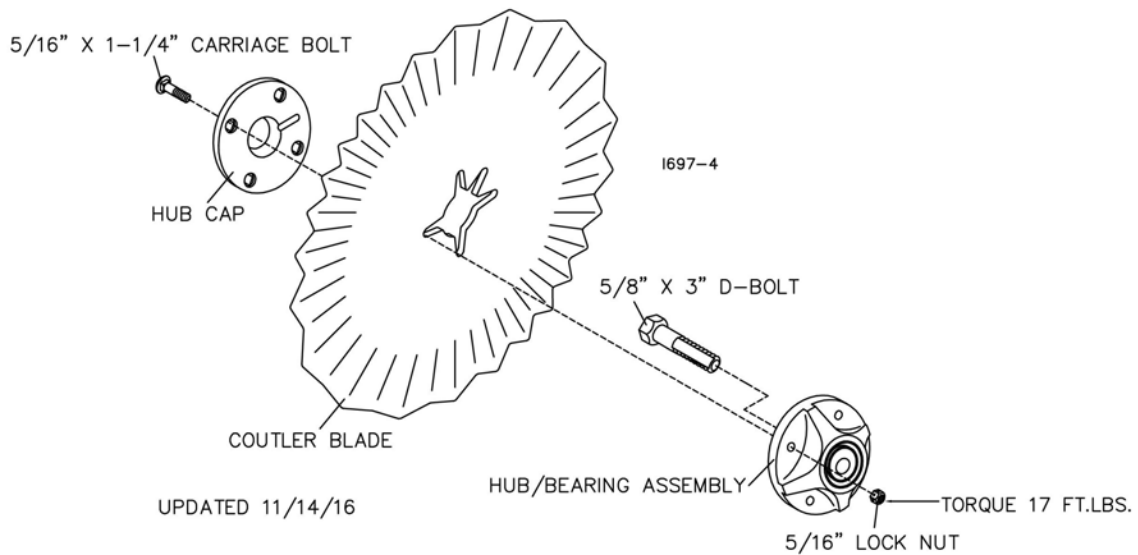
MAINTENANCE

ALIGN THE HUB CAP GROOVE,
WITH THE WHEEL SLOT AND
GREASE FITTING

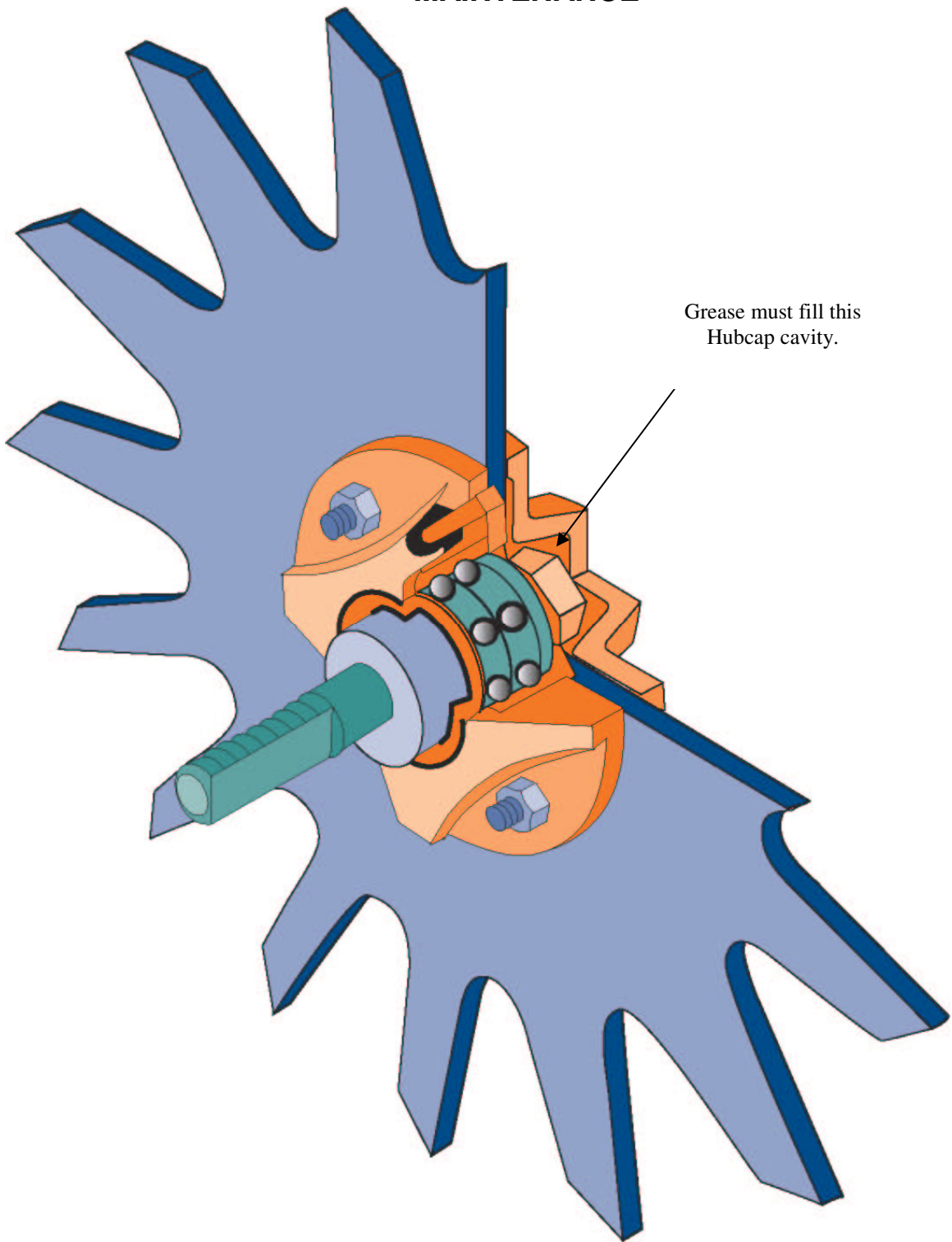


I697-4-02-2009

NOTE: Be certain to align the grease fitting with the slot in the wheel and the hubcap so that the grease can flow freely.



MAINTENANCE



MAINTENANCE

Lubrication



CAUTION: To help prevent serious injury or death to you or others caused by unexpected movement, service machine on a level surface. Lower machine to ground or sufficiently lock or block raised machine before servicing. If machine is connected to tractor, engage parking brake and place transmission in "PARK", shut off engine and remove key. If machine is detached from tractor, block wheels and use shop stands to prevent movement.



CAUTION: Do not clean, lubricate, or adjust machine while in motion.

Use grease based on NLGI consistency numbers and the expected air temperature range during the service interval.

Use a **multi-purpose polyurea, water resistant, moderate speed, and NLGI grade #2** grease.

Other greases may be used if they meet the following **NLGI Performance**

IMPORTANT: Some types of grease thickener are not compatible with others. Consult your grease supplier before mixing different types of grease.

Alternative Lubricants

Conditions in certain geographical areas may require special lubricants and lubrication practices which do not appear in the operator's manual. If there are any questions, consult Yetter Manufacturing Co. to obtain latest information and recommendation.

PART #	DESCRIPTION	OUNCES OF GREASE
2967-404	13" TAPER TOOTH R.M. WHEEL	1.12 OZ
2967-602	13" SHARK TOOTH R.M. WHEEL	1.12 OZ
2967-186	FLOATER WHEEL KIT W/R.M. WHEEL	2.08 OZ
2967-596	HEAVY DUTY OR BEVEL R.M. WHEEL W/ FLOATER WHEEL KIT	2.40 OZ

Storing Lubricants


Your machine can operate at top efficiency only if clean lubricants are used.

Use clean containers to handle all lubricants.

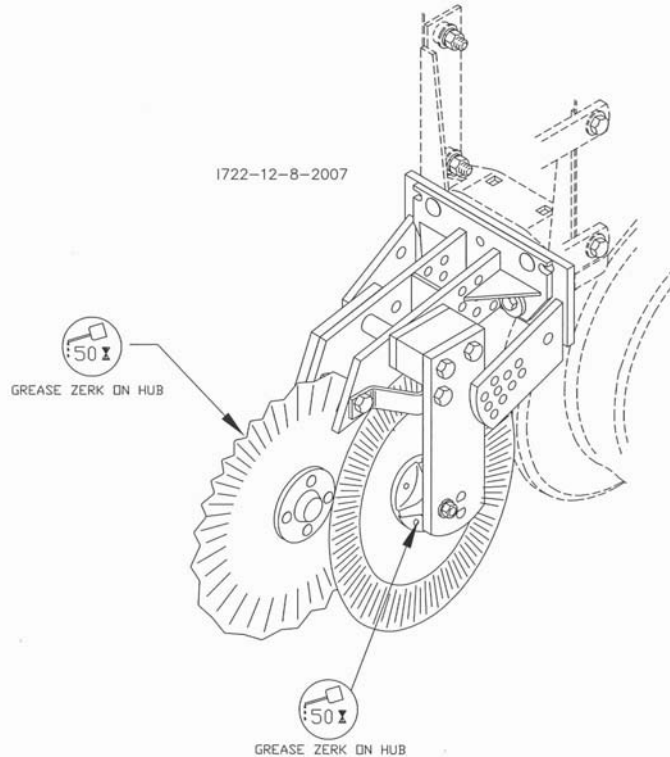
Store them in an area protected from dust, moisture and other contaminants.

MAINTENANCE

Lubrication Symbols

 Lubricate with grease at hourly interval indicated on symbol.

Lubrication Intervals



IMPORTANT: The recommended service intervals are based on normal conditions; severe or unusual conditions may require more frequent lubrication.

Perform each lubrication and service procedure at the beginning and end of each season. Clean grease fittings before using grease gun, to avoid injecting dirt and grit into the bearing. Replace any lost or broken fittings immediately. If a fitting fails to take grease, remove and clean thoroughly, replace fitting if necessary. Also check for failure of adjoining parts.

BEARING REPLACEMENT INSTALLATION

1. If you wish to be able to grease the bearings in the hubs, remove the seal from one side of the bearings as illustrated before assembly. Otherwise the bearings may be left “sealed for life”.
2. When assembling the spoke wheels, bearing assembly and hubcap, be sure to align the grease transfer hole in the spoke wheel with the groove in the hubcap and hole in the hub to allow grease passage.
3. Install/assemble the wheels, hubs and caps
4. Grease the wheel/hub/bearing assembly.

MAINTENANCE

Storing the Equipment

Store the machine in an area away from human activity

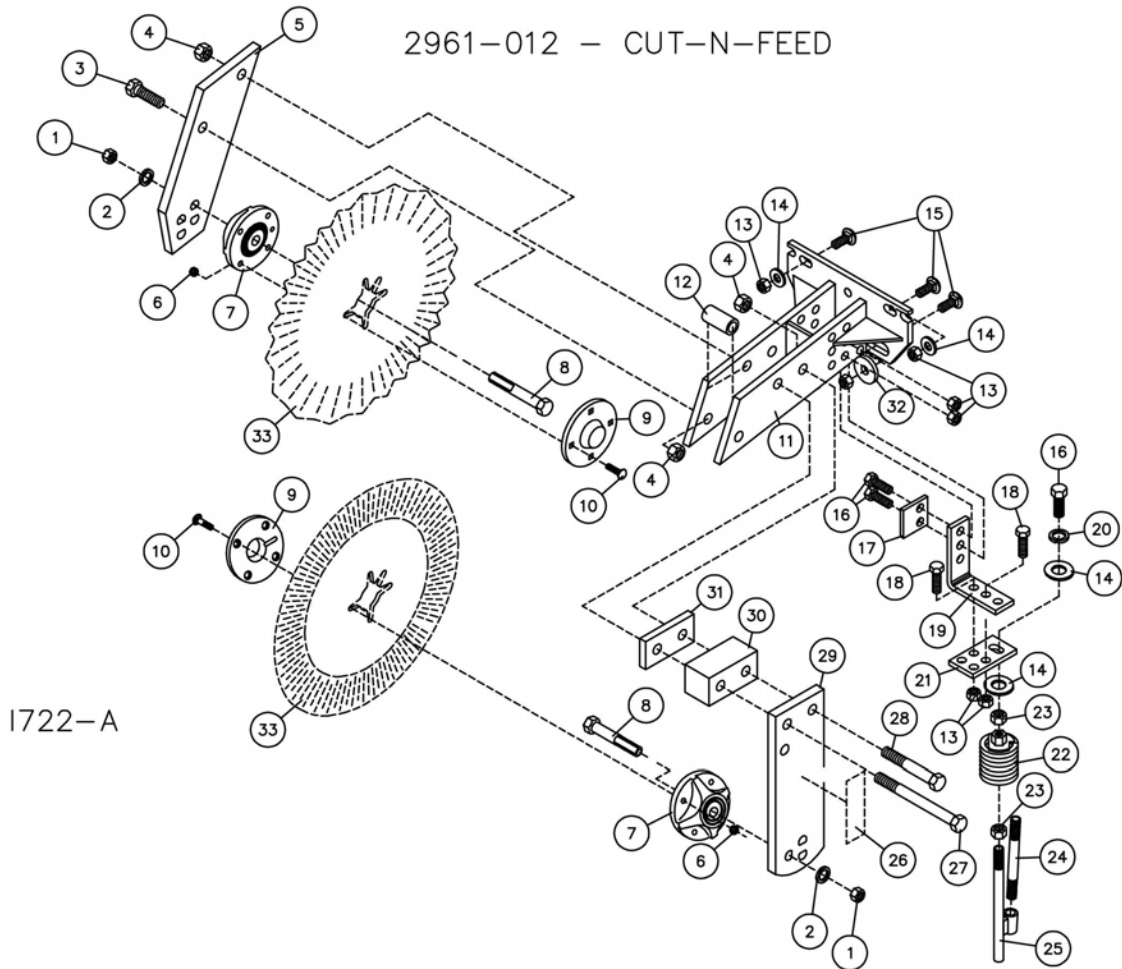
Store machine in RAISED position.

Install service locks on all wheel cylinders.

At the end of the season, the machine should be thoroughly inspected and prepared for storage. Repair or replace any worn or damaged components to prevent down time at the start of the next season. Store machine under cover with all parts in operating condition.

- Clean machine thoroughly to remove all dirt, debris and crop residue, which would hold moisture and cause rusting.
- Inspect machine for worn or broken parts. See your Yetter Farm Equipment dealer during the off-season so that parts or service can be acquired when machine is not needed in the field.
- Lubricate bearings as outlined in the Lubrication section
- Paint all parts which are chipped or worn and require repainting.
- Store machine in a clean, dry place with the planting unit out of the sun.
- If the machine cannot be stored inside, cover with a waterproof tarpaulin and tie securely in place.
- Do not allow children to play on or around the machine

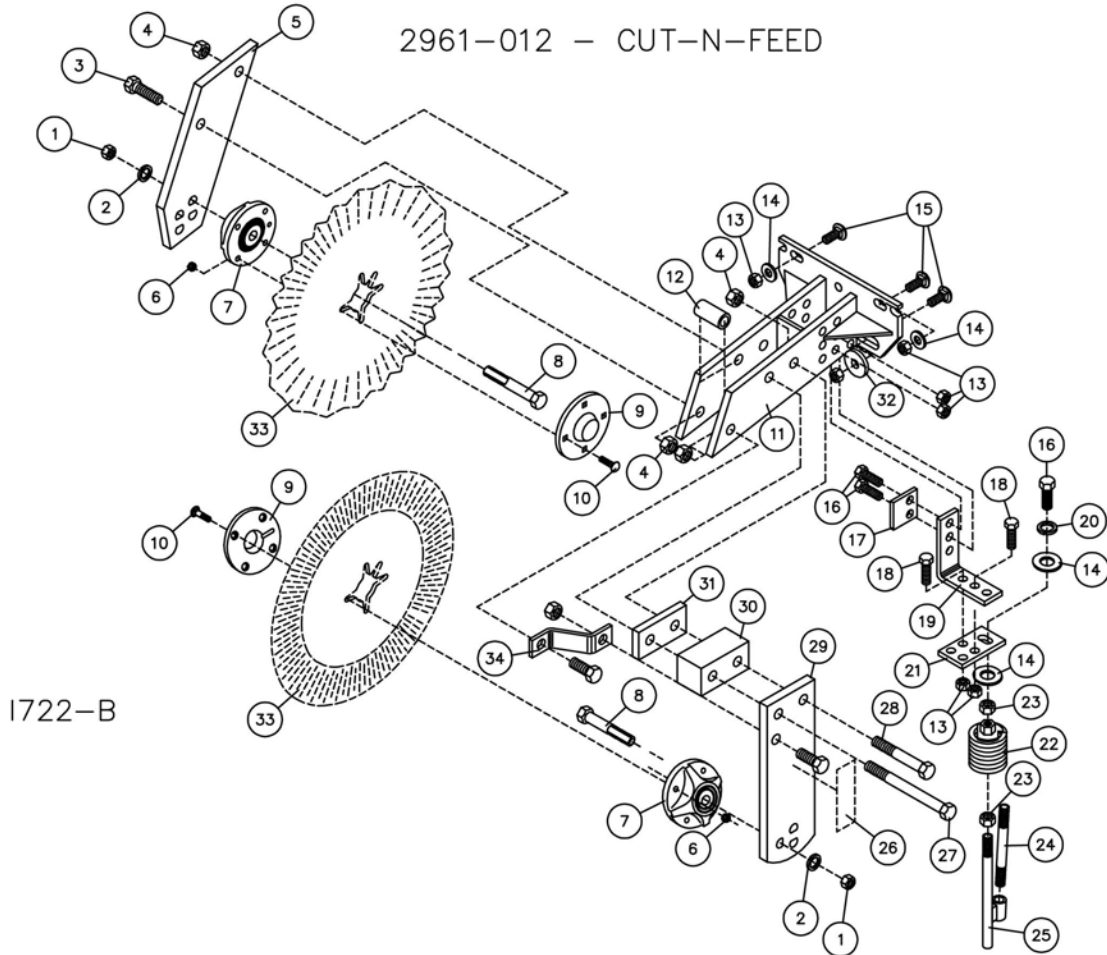
PARTS IDENTIFICATION



DET	QTY	PART NO.	DESCRIPTION	DET	QTY	PART NO.	DESCRIPTION
1	2	2520-452	5/8-11 HEX NUT ZP	18	2	2502-293	1/2-13 X 1-1/4 HHCS GR. 5 ZYD
2	2	2525-451	5/8 MED LOCKWASHER ZP	19	1	2961-308	INJECTOR MOUNT ANGLE
3	1	2502-331	5/8-11 X 1-3/4 HHCS GR. 5 ZP	20	1	2525-352	1/2 MED LOCKWASHER ZP
4	3	2520-459	5/8-11 LOCK HEX NUT ZP	21	1	2961-310	INJECTOR MOUNT PLATE
5	1	2961-300	COULTER ARM	22	1	2959-105	INJ. SPRING ASSY 6-1/2 COILS
6	8	2520-206	5/16-18 FLANGE LOCK NUT	23	2	2520-356	1/2-13 JAM HEX NUT ZP
7	2	2965-128	HUB AND BEARING ASS'Y.,4 BOLT	24	1	2515-311	3" NIPPLE,1/4NPT STAINLESS STL
8	2	2570-740	5/8-11 X 3" 'D' BOLT	25	1	2995-212	INJECTOR ROD W.A., 1/2-13
9	2	2965-352	HUB CAP CASTING, 4 BOLT, BLACK	26	1	2565-162	YETTER DECAL, 1-1/2 X 4-1/2
10	8	2505-207	5/16-18 X 1 1/4 CAR BLT GR5 ZP	27	1	2502-380	5/8-11 X 7-1/2 HHCS GR5 ZP
11	1	2961-200	COULTER COMBO BRKT W.A.	28	1	2502-334	5/8-11 X 4-1/2 HHCS GR. 5 ZP
12	1	2961-301	SPACER, COULTER BRACKET	29	1	2961-306	FERTILIZER COULTER ARM
13	7	2520-357	1/2-13 LOCK HEX NUT ZP	30	1	2961-307	COULTER ARM SPACER
14	4	2526-355	1/2 FLAT WASHER HARD'ND ZYD	31	1	2961-309	.5" SPACER
15	3	2505-339	1/2-13 X 1-1/2 CAR BLT GR 5 ZP	32	1	2526-402	9/16 ID X 1-3/4 OD X 1/4 MB ZP
16	3	2502-294	1/2-13 X 1-1/2 HHCS GR. 5 ZP	33	1	2571-014	14" SMOOTH BLADE
17	1	2995-320	SPACER, INJECTOR	1	1	2571-022	13" 13 WAVE BLADE
				1	1	2571-189	13" 25 FLUTE BLADE, 4 BOLT

4-2003 TO 7-2007

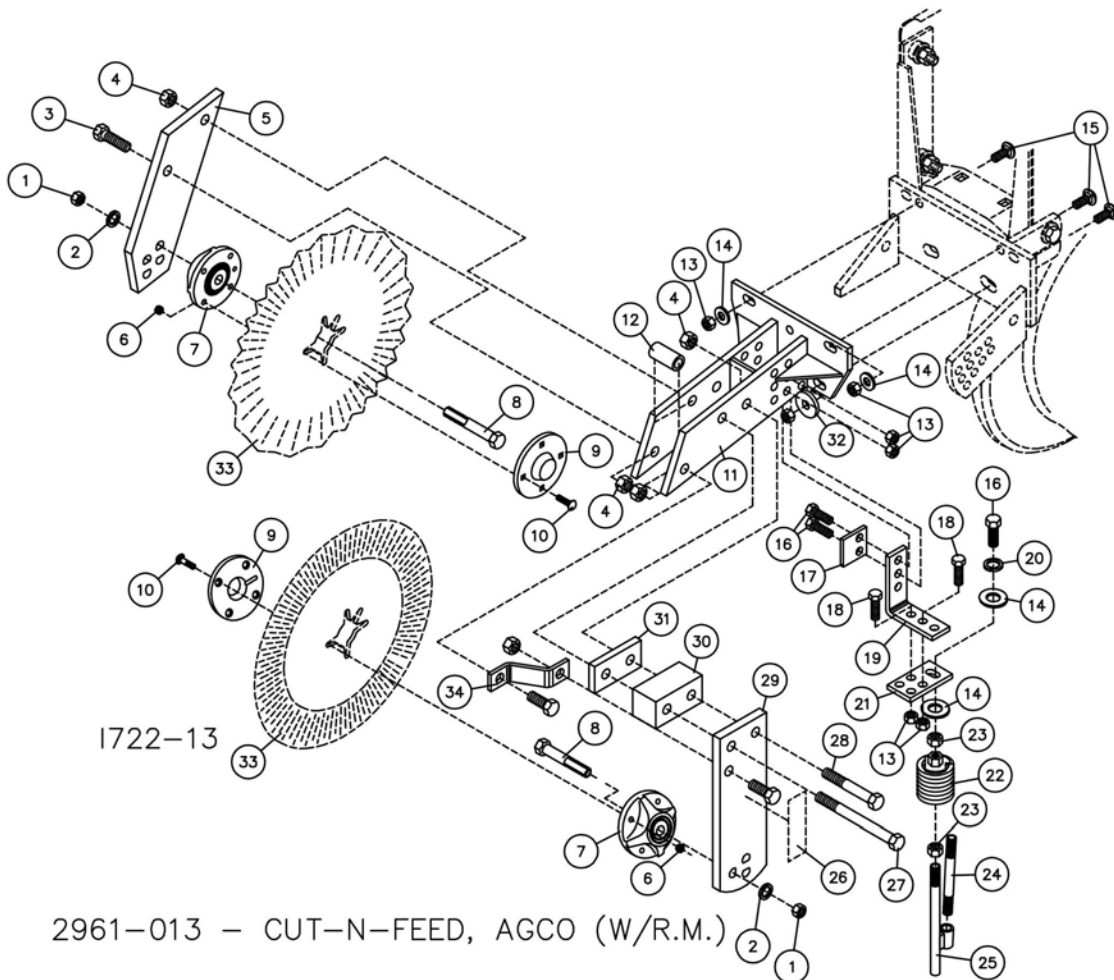
PARTS IDENTIFICATION



DET	QTY	PART NO.	DESCRIPTION	DET	QTY	PART NO.	DESCRIPTION
1	2	2520-452	5/8-11 HEX NUT ZP	18	2	2502-293	1/2-13 X 1-1/4 HHCS GR. 5 ZYD
2	2	2525-451	5/8 MED LOCKWASHER ZP	19	1	2961-308	INJECTOR MOUNT ANGLE
3	3	2502-331	5/8-11 X 1-3/4 HHCS GR. 5 ZP	20	1	2525-352	1/2 MED LOCKWASHER ZP
4	5	2520-459	5/8-11 LOCK HEX NUT ZP	21	1	2961-310	INJECTOR MOUNT PLATE
5	1	2961-300	COULTER ARM	22	1	2959-105	INJ. SPRING ASSY 6-1/2 COILS
6	8	2520-206	5/16-18 FLANGE LOCK NUT	23	2	2520-356	1/2-13 JAM HEX NUT ZP
7	2	2965-128	HUB AND BEARING ASS'Y., 4 BOLT	24	1	2515-311	3" NIPPLE, 1/4NPT STAINLESS STL
8	2	2570-740	5/8-11 X 3" 'D' BOLT	25	1	2995-212	INJECTOR ROD W.A., 1/2-13
9	2	2965-352	HUB CAP CASTING, 4 BOLT, BLACK	26	1	2565-162	YETTER DECAL, 1-1/2 X 4-1/2
10	8	2505-207	5/16-18 X 1 1/4 CAR BLT GR5 ZP	27	1	2502-380	5/8-11 X 7-1/2 HHCS GR5 ZP
11	1	2961-200	COULTER COMBO BRKT W.A.	28	1	2502-334	5/8-11 X 4-1/2 HHCS GR. 5 ZP
12	1	2961-301	SPACER, COULTER BRACKET	29	1	2961-306	FERTILIZER COULTER ARM
13	7	2520-357	1/2-13 LOCK HEX NUT ZP	30	1	2961-307	COULTER ARM SPACER
14	4	2526-355	1/2 FLAT WASHER HARD'ND ZYD	31	1	2961-309	.5" SPACER
15	3	2505-339	1/2-13 X 1-1/2 CAR BLT GR 5 ZP	32	1	2526-402	9/16 ID X 1-3/4 OD X 1/4 MB ZP
16	3	2502-294	1/2-13 X 1-1/2 HHCS GR. 5 ZP	33	1	2571-014	14" SMOOTH BLADE
17	1	2995-320	SPACER, INJECTOR			2571-022	13" 13 WAVE BLADE
						2571-189	13" 25 FLUTE BLADE, 4 BOLT
				34	1	2961-313	SUPPORT STRAP (CUT N FEED)

8-2007 TO PRESENT

PARTS IDENTIFICATION

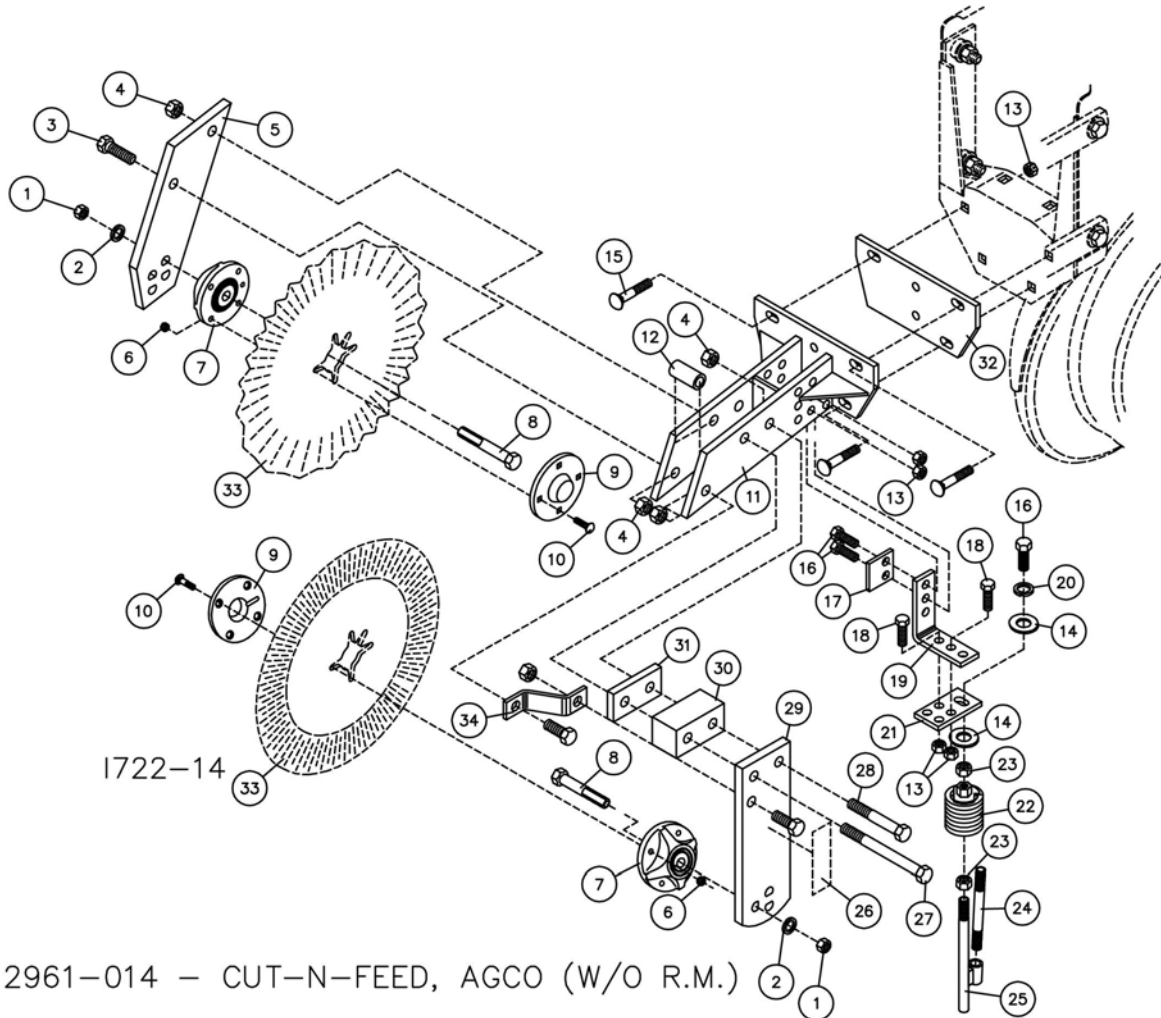


2961-013 – CUT-N-FEED, AGCO (W/R.M.)

DET	QTY	PART NO.	DESCRIPTION	DET	QTY	PART NO.	DESCRIPTION
1	2	2520-452	5/8-11 HEX NUT ZP	18	2	2502-293	1/2-13 X 1-1/4 HHCS GR. 5 ZYD
2	2	2525-451	5/8 MED LOCKWASHER ZP	19	1	2961-308	INJECTOR MOUNT ANGLE
3	3	2502-331	5/8-11 X 1-3/4 HHCS GR. 5 ZP	20	1	2525-352	1/2 MED LOCKWASHER ZP
4	5	2520-459	5/8-11 LOCK HEX NUT ZP	21	1	2961-310	INJECTOR MOUNT PLATE
5	1	2961-300	COULTER ARM	22	1	2959-105	INJ. SPRING ASSY 6-1/2 COILS
6	8	2520-206	5/16-18 FLANGE LOCK NUT	23	2	2520-356	1/2-13 JAM HEX NUT ZP
7	2	2965-128	HUB AND BEARING ASS'Y., 4 BOLT	24	1	2515-311	3" NIPPLE, 1/4NPT STAINLESS STL
8	2	2570-740	5/8-11 X 3" 'D' BOLT	25	1	2995-212	INJECTOR ROD W.A., 1/2-13
9	2	2965-352	HUB CAP CASTING, 4 BOLT, BLACK	26	1	2565-162	YETTER DECAL, 1-1/2 X 4-1/2
10	8	2505-207	5/16-18 X 1 1/4 CAR BLT GR5 ZP	27	1	2502-380	5/8-11 X 7-1/2 HHCS GR5 ZP
11	1	2961-201	COULTER COMBO BRKT W.A., AGCO	28	1	2502-334	5/8-11 X 4-1/2 HHCS GR. 5 ZP
12	1	2961-301	SPACER, COULTER BRACKET	29	1	2961-306	FERTILIZER COULTER ARM
13	7	2520-357	1/2-13 LOCK HEX NUT ZP	30	1	2961-307	COULTER ARM SPACER
14	4	2526-355	1/2 FLAT WASHER HARD'ND ZYD	31	1	2961-309	.5" SPACER
15	3	2505-339	1/2-13 X 1-1/2 CAR BLT GR 5 ZP	32	1	2526-402	9/16 ID X 1-3/4 OD X 1/4 MB ZP
16	3	2502-294	1/2-13 X 1-1/2 HHCS GR. 5 ZP	33	1	2571-014	14" SMOOTH BLADE
17	1	2995-320	SPACER, INJECTOR		1	2571-022	13" 13 WAVE BLADE
					1	2571-189	13" 25 FLUTE BLADE, 4 BOLT
				34	1	2961-313	SUPPORT STRAP (CUT N FEED)

UPDATED 12/5/2016

PARTS IDENTIFICATION



2961-014 - CUT-N-FEED, AGCO (W/O R.M.)

DET	QTY	PART NO.	DESCRIPTION	DET	QTY	PART NO.	DESCRIPTION
1	2	2520-452	5/8-11 HEX NUT ZP	18	2	2502-293	1/2-13 X 1-1/4 HHCS GR. 5 ZYD
2	2	2525-451	5/8 MED LOCKWASHER ZP	19	1	2961-308	INJECTOR MOUNT ANGLE
3	3	2502-331	5/8-11 X 1-3/4 HHCS GR. 5 ZP	20	1	2525-352	1/2 MED LOCKWASHER ZP
4	5	2520-459	5/8-11 LOCK HEX NUT ZP	21	1	2961-310	INJECTOR MOUNT PLATE
5	1	2961-300	COULTER ARM	22	1	2959-105	INJ. SPRING ASSY 6-1/2 COILS
6	8	2520-206	5/16-18 FLANGE LOCK NUT	23	2	2520-356	1/2-13 JAM HEX NUT ZP
7	2	2965-128	HUB AND BEARING ASS'Y., 4 BOLT	24	1	2515-311	3" NIPPLE, 1/4NPT STAINLESS STL
8	2	2570-740	5/8-11 X 3" 'D' BOLT	25	1	2995-212	INJECTOR ROD W.A., 1/2-13
9	2	2965-352	HUB CAP CASTING, 4 BOLT, BLACK	26	1	2565-162	YETTER DECAL, 1-1/2 X 4-1/2
10	8	2505-207	5/16-18 X 1 1/4 CAR BLT GR5 ZP	27	1	2502-380	5/8-11 X 7-1/2 HHCS GR5 ZP
11	1	2961-201	COULTER COMBO BRKT W.A., AGCO	28	1	2502-334	5/8-11 X 4-1/2 HHCS GR. 5 ZP
12	1	2961-301	SPACER, COULTER BRACKET	29	1	2961-306	FERTILIZER COULTER ARM
13	7	2520-357	1/2-13 LOCK HEX NUT ZP	30	1	2961-307	COULTER ARM SPACER
14	2	2526-355	1/2 FLAT WASHER HARD'ND ZYD	31	1	2961-309	.5" SPACER
15	3	2505-339	1/2-13 X 1-1/2 CAR BLT GR 5 ZP	32	1	2961-311	AGCO MOUNT PLATE (PAINTED)
16	3	2502-294	1/2-13 X 1-1/2 HHCS GR. 5 ZP	33	1	2571-014	14" SMOOTH BLADE
17	1	2995-320	SPACER, INJECTOR		1	2571-022	13" 13 WAVE BLADE
					1	2571-189	13" 25 FLUTE BLADE, 4 BOLT
				34	1	2961-313	SUPPORT STRAP (CUT N FEED)

UPDATED 12/5/2016

TROUBLESHOOTING

Problem	Cause	Solution
Cannot adjust coulter depth shallow enough.	Planter frame not set correctly.	Ensure that in operation the planter frame is at correct height (20"-22") and level.
	Planter opener blade worn.	Replace planter opener blades.
Cannot adjust coulter deep enough.	Coulter blade worn too small.	Replace coulter blade.
Coulter will not penetrate.	Lack of spring tension.	Increase spring tension.
Coulter penetrates too much.	Excessive spring down pressure.	Reduce spring tension.
Seed placement is too deep.	Coulter blade set too deep relative to openers.	Shallow up coulter depth.
Optional wavy blade disturbs too much soil.	Planter frame not level front to back.	Raise planter drawbar to level planter frame.
	Soil too damp or loose.	Reduce ground speed.
		Install a less aggressive blade. 14" Smooth Blade is available.
No spring tension.	Planter frame not set correctly.	Check planter frame settings, see above.
	Broken springs.	Replace broken or damaged parts.
Residue manager wheels are plugging with corn stalks.	High amount of residue. Residue is damp/tough.	Coulter blade dull, replace blade.
	Bt. Hybrid corn. Excessively long stalks.	Coulter blade dull, replace blade.
Residue manager wheels are aggressive in loose or tilled soils.	Row unit down pressure is excessive.	Decrease row unit down pressure.
	Planter frame not level.	Level the planter frame.

TROUBLESHOOTING

Problem	Cause	Solution
Row unit floats out of soil	Insufficient down pressure	Increase the tension of the planter unit down force springs
	Planter frame not level for and aft	Level the frame at 20" frame height while in planting position
	Soil too hard/compacted	May have to use a tillage implement to loosen soil
	Fertilizer coulters blade adjusted too deep	Raise the coulters. Coulters could hold planter out of ground if set too deep
Planter pulls to one side	Not an equal number of RH and LH coulters assemblies	Assemble equal number of RH and LH coulters assemblies
Damage/Breakage of blade shaft, coulters arm and or blade	Turning with blades in ground	Avoid this
	Extreme soil conditions such as very tight soil or heavy rocks, especially combined with: A: speed is too fast B: blades too deep C: turning with blades in ground	Avoid whenever possible otherwise: A: reduce speed B: run blades only deep enough to place fertilizer C: do not turn with blades in ground
Fertilizer splatter	Nozzle not aligned with furrow	Ensure each nozzle is directly behind and centered on the coulters blade furrow
	Liquid pressure is too high (PSI) pounds per square inch	Recommended PSI is 20 to 30. Adjust and recalibrate system for different pressure setting.

Our name Is getting known

Just a few years ago, Yetter products were sold primarily to the Midwest only. Then we embarked on a program of expansion and moved into the East, the South, the West and now north into Canada. We're even getting orders from as far away as Australia and Africa.

So, when you buy Yetter products . . .you're buying a name that's recognized. A name that's known and respected. A name that's become a part of American agriculture and has become synonymous with quality and satisfaction in the field of conservation tillage.

Thank you.

YETTER MANUFACTURING CO.

Colchester, IL 62326-0358 • 309/776-4111

Toll Free 800/447-5777

Fax 309/776-3222

Website: WWW.YETTERCO.COM

E-MAIL: INFO@YETTERCO.COM

2565-730_REV_C • 11/16