



2967 NOTCHED DISC RESIDUE MANAGER

OPERATORS, SET-UP & PARTS MANUAL

2565-740_REV_D • 11/2016



YETTER MANUFACTURING CO.
FOUNDED 1930

Colchester, IL 62326-0358
Toll free: 800/447-5777
309/776-3222 (Fax)

Website: www.yetterco.com
E-mail: info@yetterco.com

YETTER

FOREWORD

You've just joined an exclusive but rapidly growing club.

For our part, we want to welcome you to the group and thank you for buying a Yetter product.

We hope your new Yetter products will help you achieve both goals-increase your productivity and increase your efficiency so that you may generate more profit.

This operator's manual has been designed into four major sections: Foreword, Safety Precautions, Installation Instructions and Parts Breakdown.



This **SAFETY ALERT SYMBOL** indicates important safety messages in the manual. When you see this symbol, be alert to the possibility of **PERSONAL INJURY** and carefully read the message that follows.

The word **NOTE** is used to convey information that is out of context with the manual text. It contains special information such as specifications, techniques and reference information of a supplementary nature.

The word **IMPORTANT** is used in the text when immediate damage will occur to the machine due to improper technique or operation. Important will

apply to the same information as specified by note only of an immediate and urgent nature.

It is the responsibility of the user to read the operator's manual and comply with the safe and correct operating procedure and to lubricate and maintain the product according to the maintenance schedule in the operator's manual.

The user is responsible for inspecting his machine and for having parts repaired or replaced when continued use of the product would cause damage or excessive wear to the other parts.

It is the user's responsibility to deliver his machine to the Yetter dealer who sold him the product for service or replacement of defective parts, which are covered by the warranty policy.

If you are unable to understand or follow the instructions provided in this publication, consult your local Yetter dealer or contact:

YETTER MANUFACTURING CO.

309/776-4111

800/447-5777

309/776-3222 (FAX)

Website: www.yetterco.com

E-mail: info@yetterco.com

WARRANTY

Yetter Manufacturing warrants all products manufactured and sold by it against defects in material. This warranty being expressly limited to replacement at the factory of such parts or products as shall appear to be defective after inspection. This warranty does not obligate the Company to bear cost of labor in replacement of parts. It is the policy of the Company to make improvements without incurring obligations to add them to any unit already sold. No warranty is made or authorized to be made, other than herein set forth. This warranty is in effect for one year after purchase.

Dealer _____

Yetter Manufacturing warrants its own products only and cannot be responsible for damages to equipment on which mounted.

SAFETY

A brief description of signal words that may be used in this manual:

CAUTION: Used as a general reminder of good safety practices or to direct attention to unsafe practices.

WARNING: Denotes a specific potential hazard.

DANGER: Denotes the most serious specific potential hazard.

SAFETY PRECAUTIONS

You can make your farm a safer place to live and work if you observe the safety precautions given. Study these precautions carefully and insist that those working with you and for you follow them.

Finally, remember this: someone's carelessness, neglect or oversight usually causes an accident.



WARNING

Never clean, lubricate or adjust a machine that is in motion. Always lower or block the implement before performing service.

If machine must be serviced in the raised position, jack or block it up to prevent it from accidentally falling or injuring someone.

Do not allow riders on the tractor or implement.

Use speeds and caution dictated by the terrain being traversed. Do not operate on any slope steep enough to cause tipping or loss of control.

Be sure all personnel are clear of the immediate area before operating.

Read and understand the operator's manual and require all other persons who will operate the equipment to do the same.

Be familiar with all tractor and implement controls and be prepared to stop engine and implements quickly in an emergency.



CAUTION

Consult your implement and tractor operator's manual for correct and safe operating practices.

Beware of towed implement width and allow safe clearance.

FAILURE TO HEED MAY RESULT IN PERSONAL INJURY OR DEATH.

OPERATION PRECAUTIONS

STOP

Read this before using the Yetter product.

- MACHINE OPERATION

IMPORTANT: failure to properly set the planter frame height and levelness can result in less than successful operation of the planter and the Yetter product and may result in damaged equipment. All operators should read and thoroughly understand the instructions given prior to using the Yetter product.

NOTE: **DO NOT** use this product if the planter is not adjusted properly!

Leveling the planter:

With the planter lowered to proper operating height (**Usually 20"-22"**).

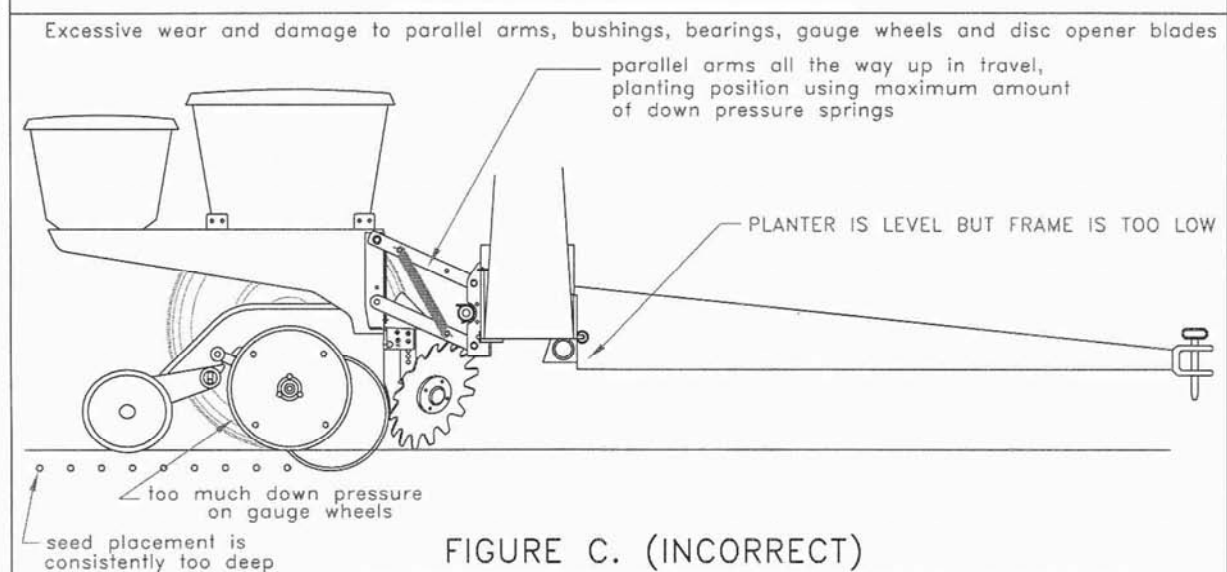
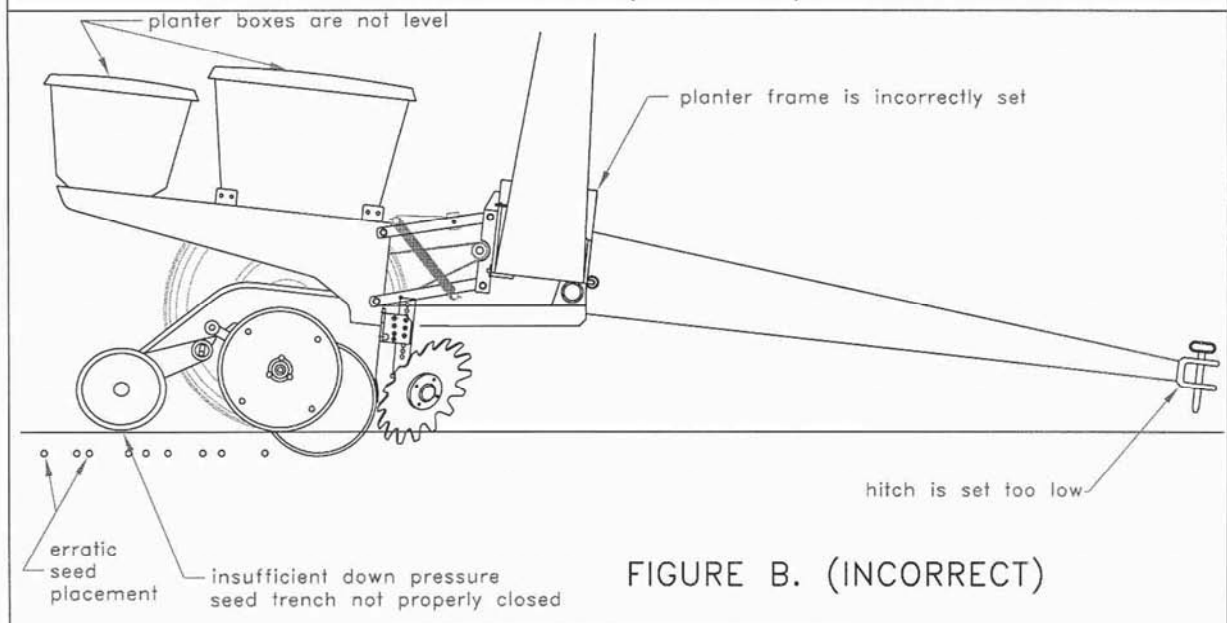
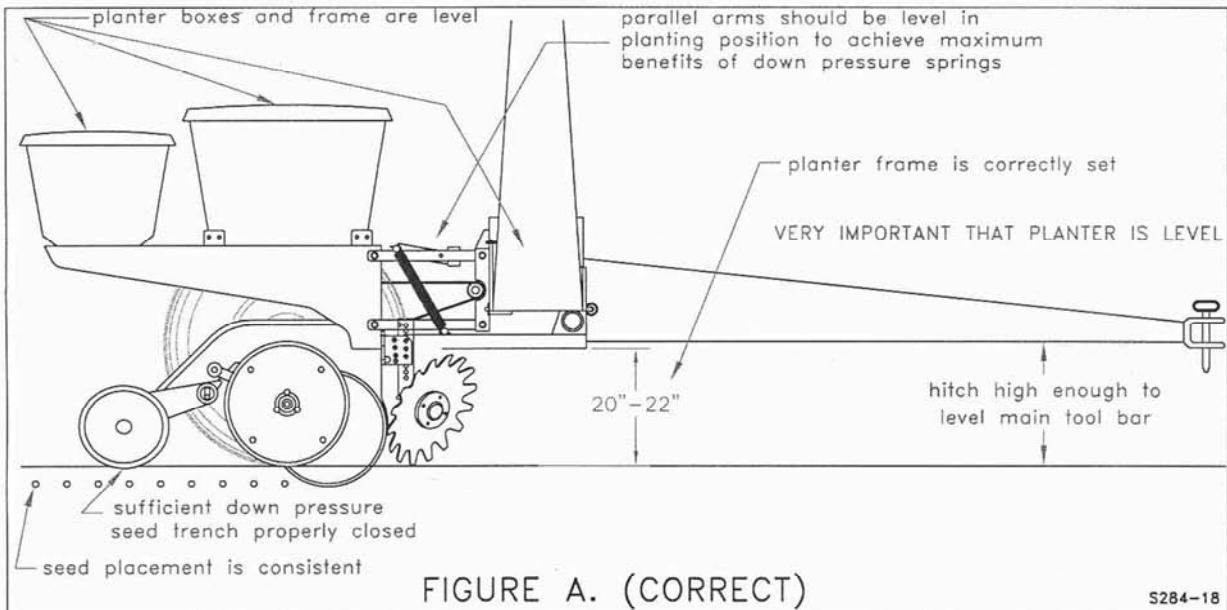
Read the planter operator's manual for recommended setting. Check to be sure the toolbar and row unit parallel arms are level fore and aft. **Re-check** when the planter is in the **field** and has been **fully loaded** with seed, fertilizer, granular chemicals, etc. Also, a field check with a bubble level on the frame should be made of the hitch height to ensure level operation front to back.

It is important for the planter to operate level laterally. Tire pressure must be maintained at pressures specified by the manufacturer.

Field and actual planting conditions change and will dictate planter frame heights. You must ensure that the row unit parallel arms are approximately parallel with the ground.

IMPORTANT: For proper operation of the planter attachments and row units, it is imperative that the planter toolbars and row unit parallel arms be level side-to-side and front-to-rear. The toolbar frame should operate at a 20"-22" height from the **planting surface**. Check the manufacturer's operator's manual for instructions on how to adjust the frame height and levelness.

PLANTER ADJUSTMENT



BOLT TORQUE

Mounting bolts and hardware

Before operating the Residue Manager for the first time, check to be sure that all hardware is tight. Check all hardware again after approximately 50 hours of operation and at the beginning of each planting season.

All hardware used on the Residue Manager is Grade 5 unless otherwise noted. Grade 5 cap screws are marked with three radial lines on the head. If hardware must be replaced, be sure to replace it with hardware of equal size, strength and thread type. Refer to the torque values chart when tightening hardware.



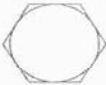



Important: Over tightening hardware can cause as much damage as when under tightening. Tightening hardware beyond the recommended range can reduce its shock load capacity.

The chart below is a guide for proper torque. Use it unless a specified torque is called out elsewhere in the manual.

Torque is the force you apply to the wrench handle or the cheater bar, times the length of the handle or bar.

Use a torque wrench whenever possible.

The following table shows torque in ft. lbs. for coarse thread hardware.

| BOLT DIA. AND THREADS PER INCH |  GRADE 2 |  GRADE 5 | OR  A-325 |  GRADE 8 |
|---|---|---|--|---|
| 1/4 | 6 | 10 | | 14 |
| 5/16 | 12 | 20 | | 30 |
| 3/8 - 16 | 25 | 35 | | 50 |
| 7/16 - 14 | 35 | 55 | | 80 |
| 1/2 - 13 | 55 | 85 | | 125 |
| 9/16 - 12 | 75 | 125 | | 175 |
| 5/8 - 11 | 105 | 170 | | 235 |
| 3/4 - 10 | 185 | 305 | | 425 |
| 7/8 - 9 | 170 | 445 | | 690 |
| 1-8 | 260 | 670 | | 1030 |
| 1 1/8 - 7 | 365 | 900 | | 1460 |
| 1 1/4 - 7 | 515 | 1275 | | 2060 |
| 1 3/8 - 6 | 675 | 1675 | | 2700 |
| 1 1/2 - 6 | 900 | 2150 | | 3500 |
| 1 3/4 - 5 | 1410 | 3500 | | 5600 |



Lubricate all bearings and moving parts as assembled and make certain that they work freely.

WARNING: Never work around the toolbar/implement while in a raised position without using safety lockups.



CAUTION: The Residue Managers are very heavy and sharp. Pay extra attention to lifting techniques while handling and or maneuvering the opener during assembly. Failure to do so may lead to personal injury.

YETTER MODEL 2965 & 2967

2965 Trashmaster and 2967 Residue Manager

The **2965 Trashmaster** is a smooth disc furrowing attachment for planters which will cut a layer of dirt and residue in front of the planter unit to leave a clear fresh path for the planter opener discs. The 2965 Trashmaster is designed to *move* dirt and residue out of the path of the planter opener.

The **2967 Residue Manager** is designed to work in heavy residue situations especially where minimum soil movement is required. Depending on conditions and objectives, the 2967 Residue Manager can be set shallow with the teeth only engaged in the residue so as to clear heavy residue with minimal soil disturbance. Residue Managers are not recommended when surface application pre-plant herbicide is used prior to planting.

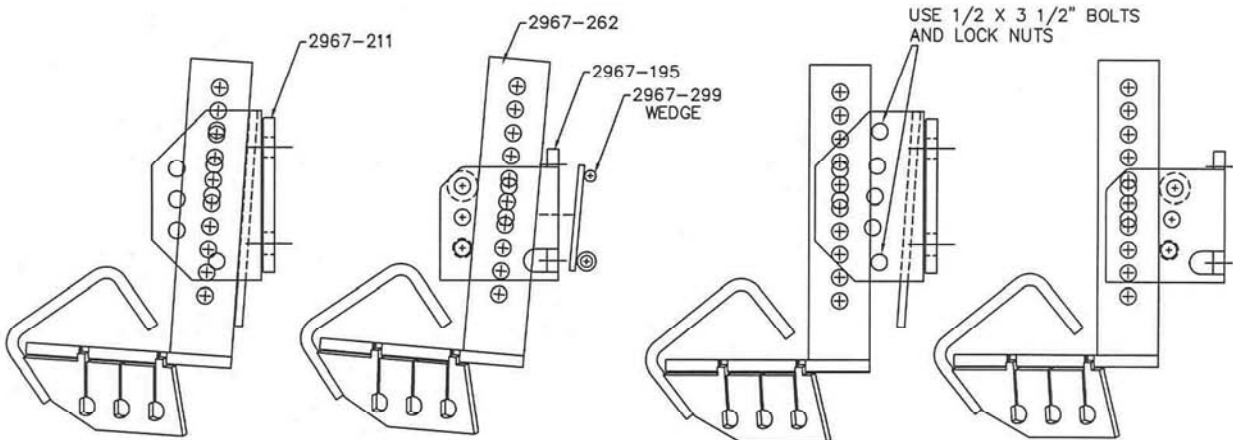
OPTIONAL EQUIPMENT FOR TRASHMASTER & RESIDUE MANAGER

| Model No. | Description |
|-----------|--|
| 6000-160 | Light duty spring used only w/model 2965-015 and 2967-015. |
| 2960-126 | Heavy-duty down pressure spring package used on the 2965-015 and 2967-015. |
| 2967-455 | Residue Manager Wheel Cleaner |
| 2967-081 | Residue Manager for John Deere Screw Adjust Bracket |

INSTALLATION

The universal model that fits on JD 7200/1700 series planters can be mounted two ways (See Figure 1). The front set of holes is to mount these models on planter units with light duty or heavy-duty cast lower parallel arms. If the front set of holes is used, assemble two 1/2 bolts, 1/2" x 3-1/2", to the upper and lower rear holes on the mounting bracket using 1/2" locknuts. **NOTE:** Do not over-tighten. The rear set of holes is for planter units with heavy-duty welded lower parallel arms. For this application the 1/2" x 3-1/2" bolts are not used.

MOUNTING ARRANGEMENTS FOR JOHN DEERE 7200/1700 SERIES



S60-1

**FOR HEAVY DUTY "WELDED"
LOWER PARALLEL ARMS &
21" LONG PARALLEL ARMS**

**FOR LIGHT DUTY OR HEAVY DUTY CAST
14" LOWER PARALLEL ARMS
ALSO: JD 7000, KINZE & WHITE 6100**

FIGURE 1

OPERATING ADJUSTMENTS

Be sure planter frame is **LEVEL** and at the height stated in the planter operation manual.

DEPTH

Remove spring locking pin and adjustment pin from the wheel support. Raise or lower the stem and wheel assembly so the teeth of the wheels are in solid contact with the residue and lightly touching the soil.

The function of the row cleaner is to sweep aside residue and not move soil. When using pre-plant incorporated herbicide, the row cleaner depth should be adjusted to minimize soil disturbance so the cleaner will not reduce the effectiveness of the incorporated herbicide.

ROW CLEANER

1. **DO NOT** move soil. Residue Managers are designed to move crop residue only.
2. **DO NOT** operate planter at slow speeds, ground speed affects how aggressive the spoke wheels are; operate at sufficient speed to maintain good residue flow.
3. **DO NOT** expect 100% of crop residue to be cleared, it is not necessary and would necessitate engaging the soil. The width of path cleared depends on ground conditions, depth setting and ground speed.
4. **DO** expect to see wheels occasionally quit turning, indicates ideal (shallow) setting which is not moving dirt.
5. **DO** expect the potential to bend or break teeth on wheels in excessively rocky conditions.
6. **DO** adjust planter frame height and drawbar correctly. Very important to ensure planter unit will follow ground contours properly.
7. **DO** adjust planter row unit down pressure kit correctly to prevent excessive depth.
8. **DO** expect finely tilled/soft soils to require adjustment due to lack of resistance, the wheel must turn to move residue.
9. **DO** expect more adjustments to be required in finely tilled or soft soils. In these conditions, the planter may lose floatation requiring adjustment of the residue manager to shallower positions.

ASSEMBLY/MAINTENANCE

BEARING ASSEMBLY AND LUBRICATION

Practice Safety

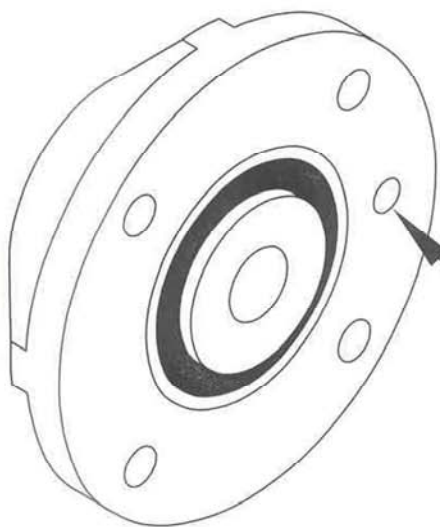
Understand and practice safe service procedures before doing work. Follow ALL the operating, maintenance and safety information in the equipment operator manual. Clear the area of bystanders, especially small children, when performing any maintenance or adjustments. Keep work area clean and dry. Use adequate lighting for the job. Use only tools, jacks and hoists of sufficient capacity for the job.

Never lubricate, service, or adjust machine while it is moving. Keep hands, feet, and clothing from power-driven moving and rotating parts. Disengage all power and operate controls to relieve pressure. Lower equipment to the ground and stop the engine. Remove the key. Wait for all moving parts to stop before servicing, adjusting, repairing or unplugging.

Securely support any machine elements with blocks or safety stands that must be raised for service work.

Keep all parts in good condition and properly installed. Fix damaged equipment immediately. Replace worn or broken parts. Remove any buildup of grease, oil, or debris. Make sure all guards are in place and properly secured when maintenance work is completed.

Assembly

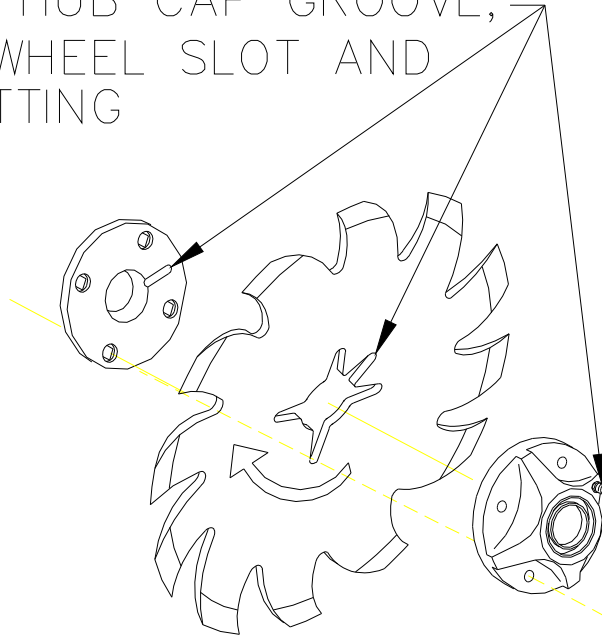


ALIGN GREASE
FITTING HOLES.

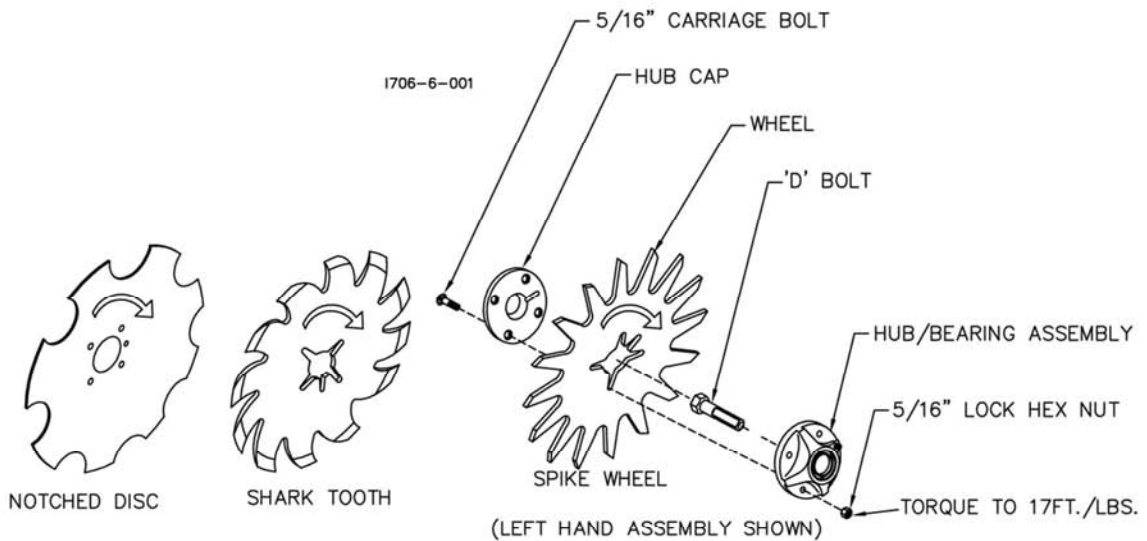
I190-1

MAINTENANCE

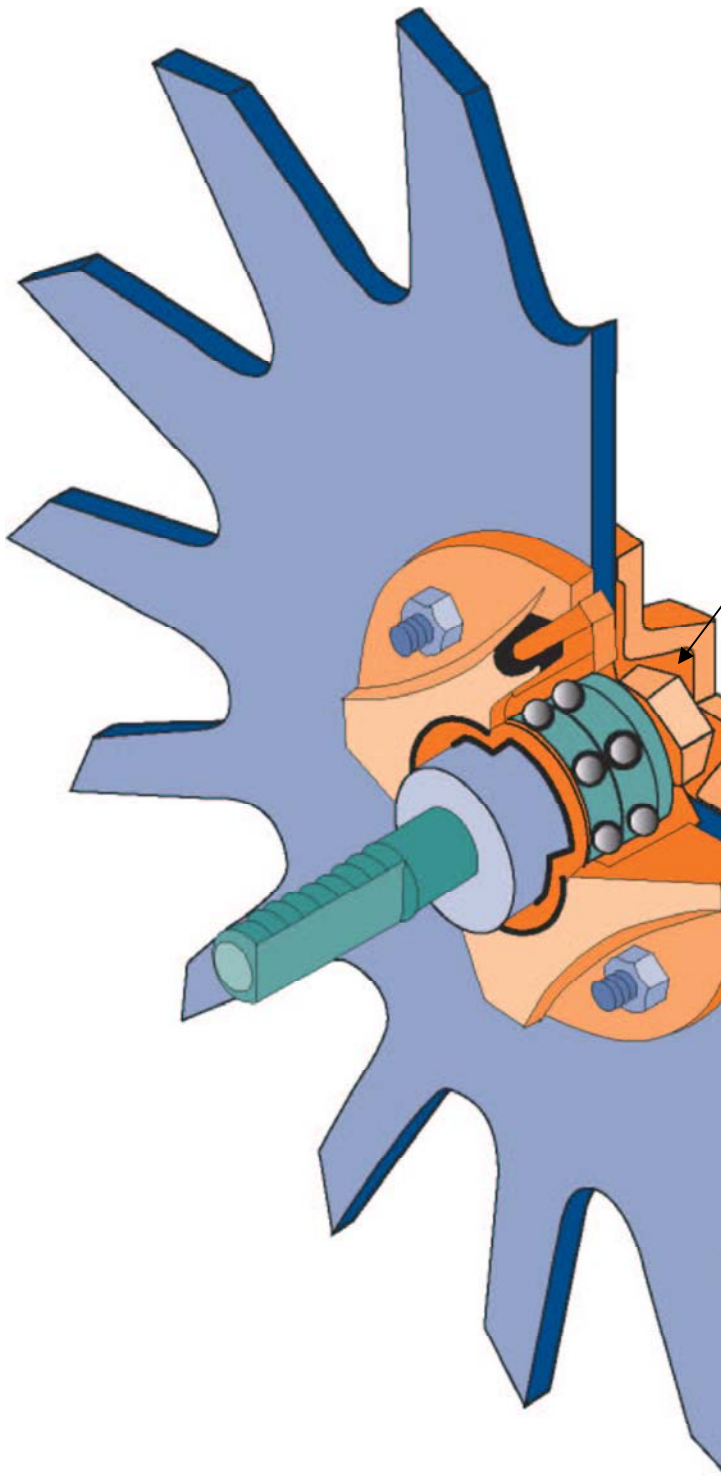
ALIGN THE HUB CAP GROOVE,
WITH THE WHEEL SLOT AND
GREASE FITTING



NOTE: Be certain to align the grease fitting with the slot in the wheel and the hubcap so that the grease can flow freely.



MAINTENANCE



Grease must fill this
Hubcap cavity.

MAINTENANCE

Lubrication



CAUTION: To help prevent serious injury or death to you or others caused by unexpected movement, service machine on a level surface. Lower machine to ground or sufficiently lock or block raised machine before servicing. If machine is connected to tractor, engage parking brake and place transmission in "PARK", shut off engine and remove key. If machine is detached from tractor, block wheels and use shop stands to prevent movement.



CAUTION: Do not clean, lubricate, or adjust machine while in motion.

Use grease based on NLGI consistency numbers and the expected air temperature range during the service interval.

Use a **multi-purpose polyurea, water resistant, moderate speed, and NLGI grade #2** grease.

Other greases may be used if they meet the following **NLGI Performance**

IMPORTANT: Some types of grease thickener are not compatible with others. Consult your grease supplier before mixing different types of grease.

Alternative Lubricants

Conditions in certain geographical areas may require special lubricants and lubrication practices which do not appear in the operator's manual. If there are any questions, consult Yetter Manufacturing Co. to obtain latest information and recommendation.

| PART # | DESCRIPTION | OUNCES OF GREASE |
|----------|-------------------|------------------|
| 2571-277 | 16" TOOTH NOTCHED | 1.05 OZ |

Storing Lubricants

Your machine can operate at top efficiency only if clean lubricants are used.

Use clean containers to handle all lubricants.

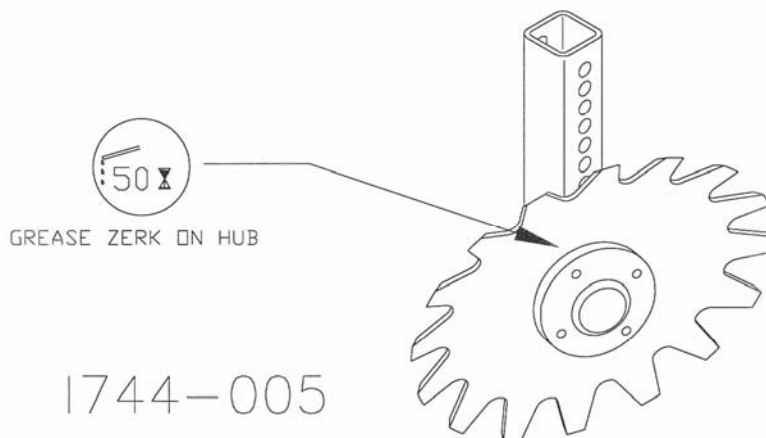
Store them in an area protected from dust, moisture and other contaminants.

MAINTENANCE Lubrication Symbols



Lubricate with grease at hourly interval indicated on symbol.

Lubrication Intervals



IMPORTANT: The recommended service intervals are based on normal conditions; severe or unusual conditions may require more frequent lubrication.

Perform each lubrication and service procedure at the beginning and end of each season. Clean grease fittings before using grease gun, to avoid injecting dirt and grit into the bearing. Replace any lost or broken fittings immediately. If a fitting fails to take grease, remove and clean thoroughly, replace fitting if necessary. Also check for failure of adjoining parts.

BEARING REPLACEMENT INSTALLATION

1. When assembling the spoke wheels, bearing assembly and hubcap, be sure to align the grease transfer hole in the spoke wheel with the groove in the hubcap and hole in the hub to allow grease passage.
2. Assemble the wheels, hubs and caps.
3. Grease the wheel/hub/bearing assembly.

MAINTENANCE

Storing the Equipment

Store the machine in an area away from human activity

Store machine in RAISED position.

Install service locks on all wheel cylinders.

At the end of the season, the machine should be thoroughly inspected and prepared for storage. Repair or replace any worn or damaged components to prevent down time at the start of the next season. Store machine under cover with all parts in operating condition.

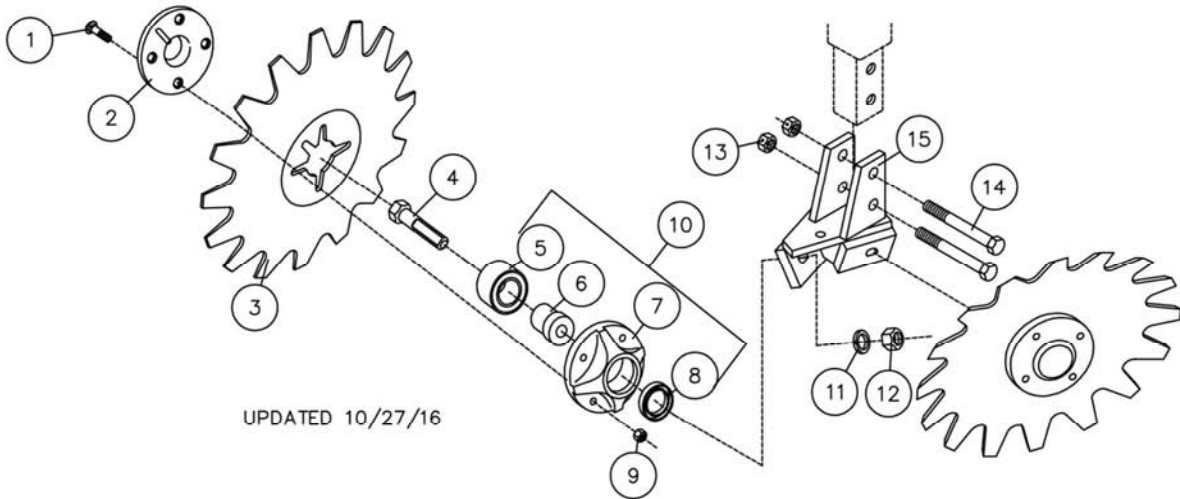
- Clean machine thoroughly to remove all dirt, debris and crop residue, which would hold moisture and cause rusting.
- Inspect machine for worn or broken parts. See your Yetter Farm Equipment dealer during the off-season so that parts or service can be acquired when machine is not needed in the field.
- Lubricate bearings as outlined in the Lubrication section
- Paint all parts which are chipped or worn and require repainting.
- Store machine in a clean, dry place with the planting unit out of the sun.
- If the machine cannot be stored inside, cover with a waterproof tarpaulin and tie securely in place.
- Do not allow children to play on or around the machine

PARTS IDENTIFICATION

2967-092-R MULTI-NOTCHED DISC R.M., SCREW ADJUST, RH (SHOWN)
 2967-092-L MULTI-NOTCHED DISC R.M., SCREW ADJUST, LH

| KEY | QTY. | PART NO. | DESCRIPTION |
|-----|------|---------------|---|
| 1 | 8 | 2505-207 | 5/16-18 X 1 1/4 CAR BLT GR5 |
| 2 | 2 | 2965-352-DISC | HUB CAP CASTING, 4 BOLT, BLACK |
| 3 | 2 | 2571-277 | 16 TOOTH NOTCHED RM DISC |
| 4 | 2 | 2570-740 | D-BOLT,FLANGE,5/8-11 X 2.812 GR.8 ZYD |
| 5 | 2 | 2570-594 | BEARING, 2 ROW NTN# DF0654LU |
| 6 | 2 | 2570-715 | BEARING INSERT, TRASHMASTER |
| 7 | 2 | 2965-351 | HUB CAST.,MACHINED, 4 BOLT |
| 8 | 2 | 2550-069 | SEAL, TRIPLE LIP, NTI# 1812-5 |
| 9 | 8 | 2520-206 | 5/16-18 FLANGE LOCK NUT |
| 10 | 2 | 2965-128 | HUB AND BEARING ASS'Y.,4 BOLT |
| 11 | 2 | 2525-451 | 5/8 MED LOCKWASHER ZP |
| 12 | 2 | 2520-452 | 5/8-11 HEX NUT ZP |
| 13 | 2 | 2520-357 | 1/2-13 LOCK HEX NUT ZP |
| 14 | 2 | 2502-316 | 1/2-13 X 3-1/2 HHCS GR 5 ZP |
| 15 | 1 | 2966-218 | STAGGERED RM W.A., RH(JD SCREW ADJ) (SHOWN) |
| | 1 | 2966-219 | STAGGERED RM W.A., LH(JD SCREW ADJ) |

1744-2



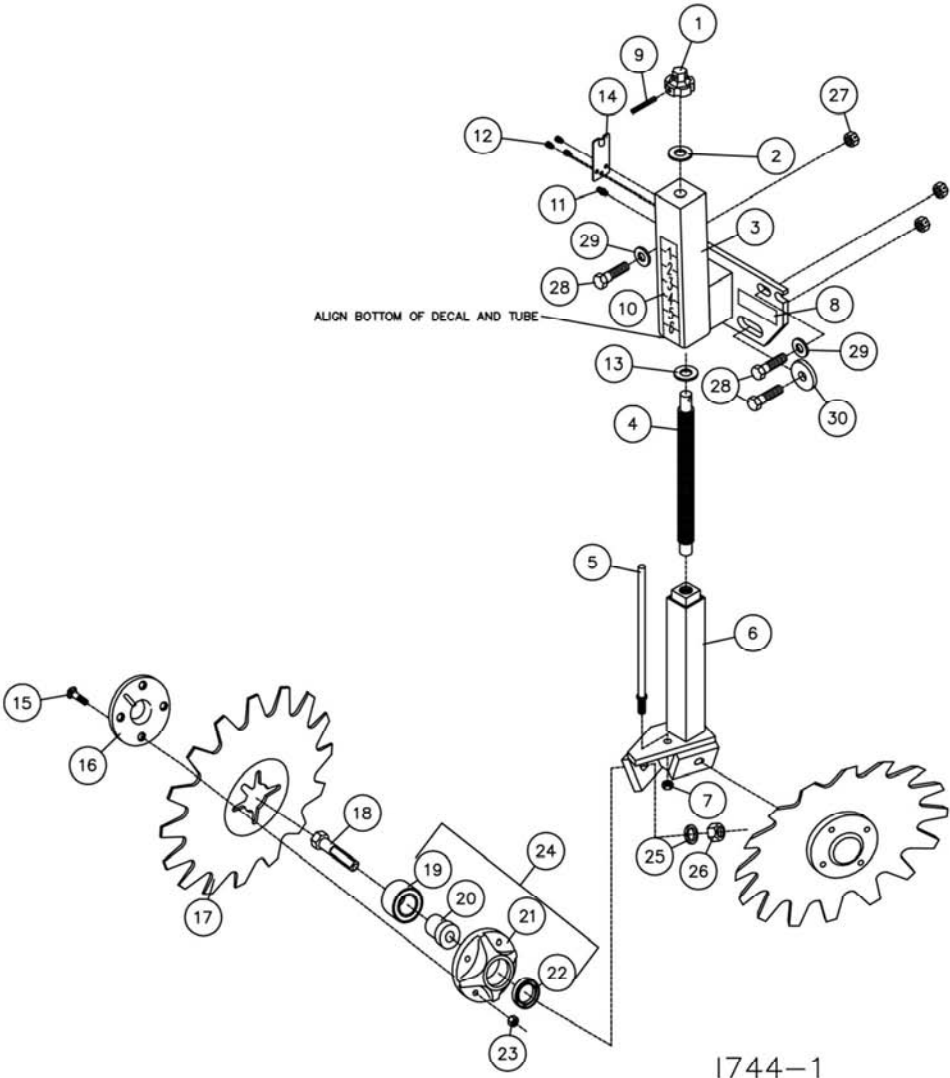
PARTS IDENTIFICATION

2967-093-R (SHOWN)

2967-093-L

MULTI-NOTCHED DISC SCREW ADJUST R.M., RH (SHOWN)

MULTI-NOTCHED DISC SCREW ADJUST R.M., LH



REVISED 10/27/16

PARTS IDENTIFICATION

2967-093-R (SHOWN)

2967-093-L

MULTI-NOTCHED DISC SCREW ADJUST R.M., RH (SHOWN)

MULTI-NOTCHED DISC SCREW ADJUST R.M., LH

| DET | QTY | PART NO. | DESCRIPTION |
|-----|-----|---------------|---|
| 1 | 1 | 2967-699 | ADJUSTMENT KNOB W.A.(9/07) |
| 2 | 1 | 2526-453 | 5/8 SAE FLATWASHER ZP |
| 3 | 1 | 2966-204 | HOUSING W.A. |
| 4 | 1 | 2967-657 | ACME SCREW |
| 5 | 1 | 2967-755 | INDICATOR ROD, 9" |
| 6 | 1 | 2966-220 | STAGGERED SCREW ADJUST RM STEM W.A., RH |
| | | 2966-221 | STAGGERED SCREW ADJUST RM STEM W.A., LH |
| 7 | 1 | 2520-253 | 3/8-16 JAM HEX NUT ZP |
| 8 | 1 | 2565-179 | YETTER DECAL 1" X 3" |
| 9 | 1 | 2530-158 | PIN,COILED SPRING,1/4X1-1/2,HD |
| 10 | 1 | 2565-815 | ADJUSTMENT DECAL |
| 11 | 1 | 2533-110 | 1/4-28 ZERK STRAIGHT SELF-TAP |
| 12 | 3 | 2510-102 | #10-32 X .25 HEX SOCKET HD ZYD. |
| 13 | 1 | 2526-456 | BVLE DISC SPRG .630 IDX 1.250D |
| 14 | 1 | 2967-652 | DETENT PLATE |
| 15 | 8 | 2505-207 | 5/16-18 X 1 1/4 CAR BLT GR5 |
| 16 | 2 | 2965-352-DISC | HUB CAP CASTING, 4 BOLT, BLACK |
| 17 | 2 | 2571-277 | 16 TOOTH NOTCHED RM DISC |
| 18 | 2 | 2570-740 | D-BOLT,FLANGE, 5/8-11 X 2.812" GR.8 ZYD |
| 19 | 2 | 2570-594 | BEARING, 2 ROW NTN# DF0654LU |
| 20 | 2 | 2570-715 | BEARING INSERT, TRASHMASTER |
| 21 | 2 | 2965-351 | HUB CAST.,MACHINED, 4 BOLT |
| 22 | 2 | 2550-069 | SEAL, TRIPLE LIP, NTI# 1812-5 |
| 23 | 8 | 2520-206 | 5/16-18 FLANGE LOCK NUT |
| 24 | 2 | 2965-128 | HUB AND BEARING ASS'Y.,4 BOLT |
| 25 | 2 | 2525-451 | 5/8 MED LOCKWASHER ZP |
| 26 | 2 | 2520-452 | 5/8-11 HEX NUT ZP |
| 27 | 3 | 2520-357 | 1/2-13 LOCK HEX NUT ZP |
| 28 | 3 | 2502-294 | 1/2-13 X 1-1/2 HHCS GR. 5 ZP |
| 29 | 2 | 2526-355 | 1/2 FLAT WASHER HARD'ND ZYD |
| 30 | 1 | 2526-402 | 9/16 ID X 1-3/4 OD X 1/4 MB ZP |

1744-1

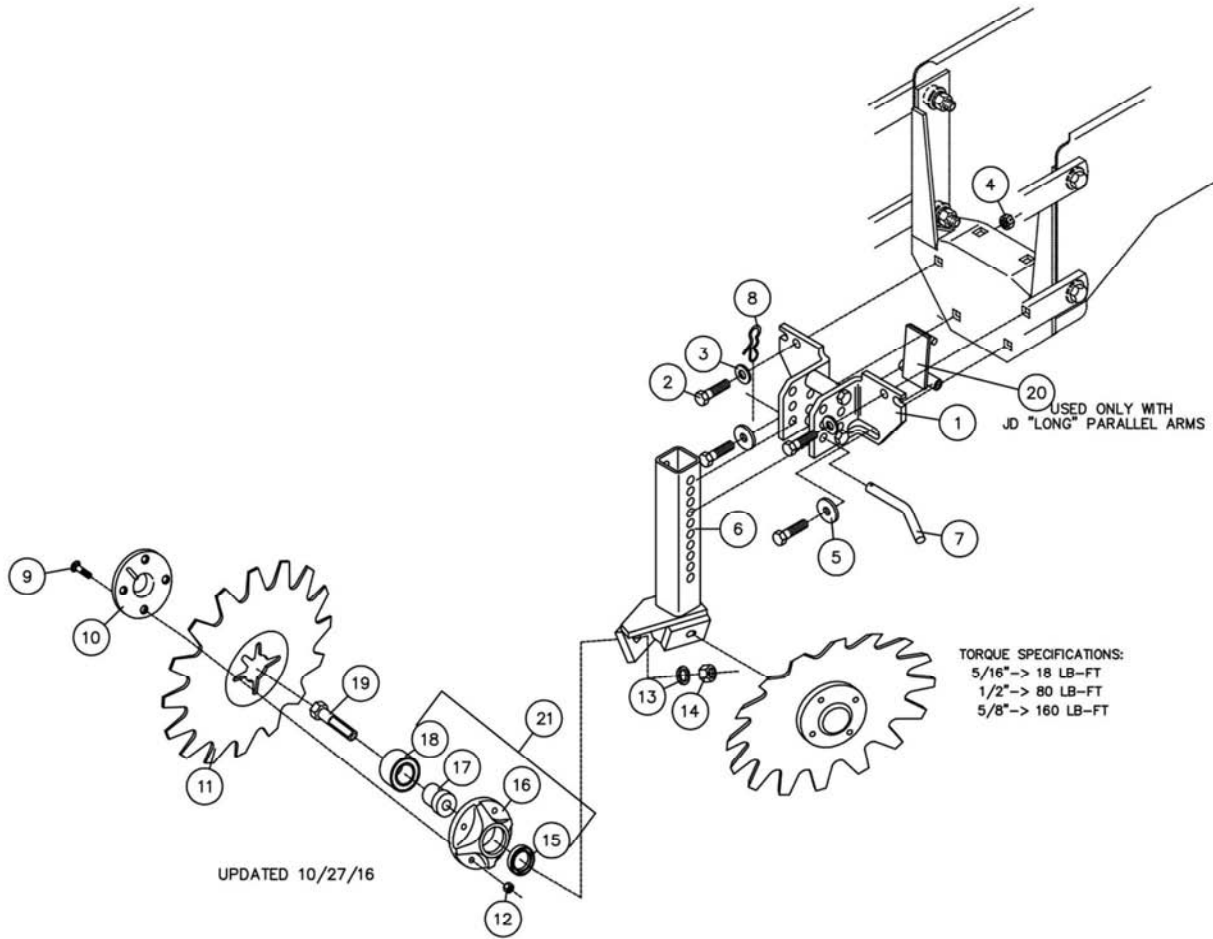
PARTS IDENTIFICATION

2967-094-R (SHOWN)

2967-094-L

MULTI-NOTCHED DISC R.M., RH (SHOWN)

MULTI-NOTCHED DISC R.M., LH



PARTS IDENTIFICATION

2967-094-R (SHOWN)

2967-094-L

MULTI-NOTCHED DISC R.M., RH (SHOWN)

MULTI-NOTCHED DISC R.M., LH

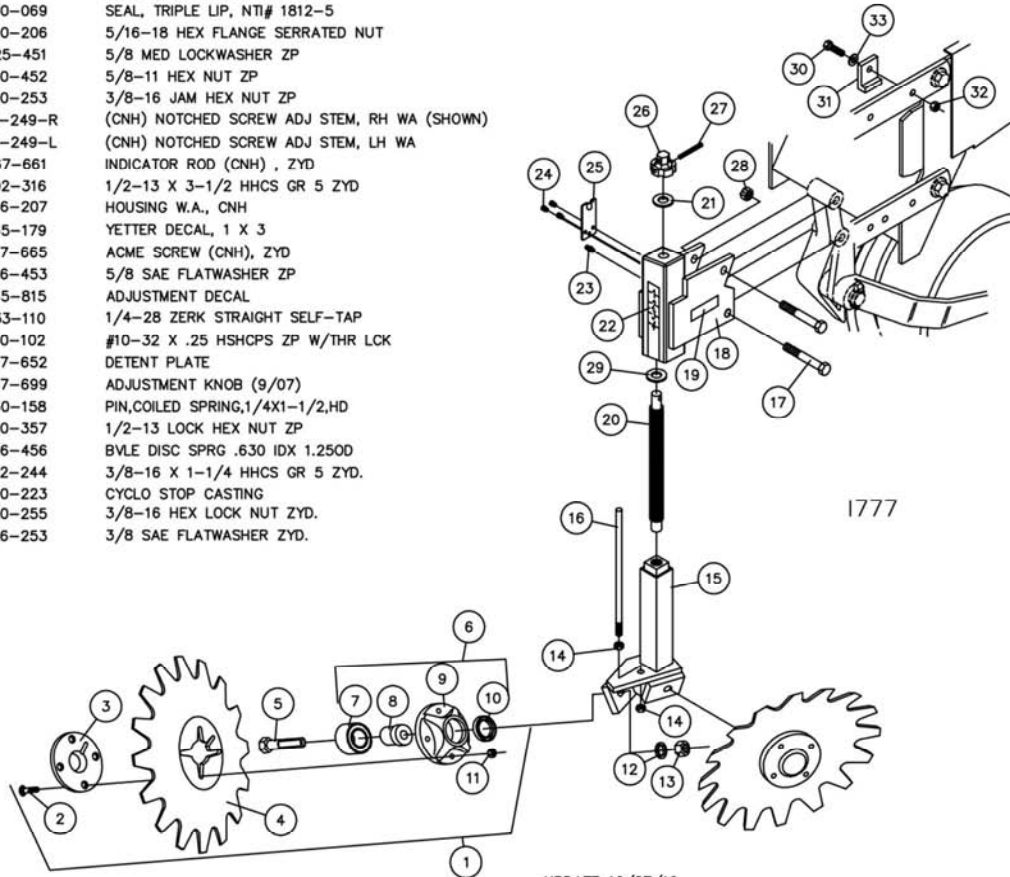
| KEY | QTY. | PART NO. | DESCRIPTION |
|-----|------|---------------|--|
| 1 | 1 | 2967-195 | R.M. BRACKET ASSEMBLY |
| 2 | 4 | 2502-294 | 1/2-13 X 1 1/2" HHCS GR.5 ZP. |
| 3 | 2 | 2526-355 | 1/2" FLATWASHER, HARDENED, P.C. |
| 4 | 4 | 2520-357 | 1/2-13 LOCK HEX NUT ZP. |
| 5 | 2 | 2527-330 | 1/2 ID X 1 1/2 OD X 7 GA MA BU ZP |
| 6 | 1 | 2966-222 | STAGGERED RM STEM W.A., RH (SHOWN) |
| | | 2966-223 | STAGGERED RM STEM W.A., LH |
| 7 | 1 | 2965-305 | PIN, FURROWING ATTACHMENT ZP. |
| 8 | 1 | 2570-448 | .120 BOWTIE LOCKING COTTER |
| 9 | 8 | 2505-207 | 5/16-18 X 1 1/4 CAR BLT GR5 |
| 10 | 2 | 2965-352-DISC | HUB CAP CASTING, 4 BOLT, BLACK |
| 11 | 2 | 2571-227 | 16 TOOTH NOTCHED RM DISC |
| 12 | 8 | 2520-206 | 5/16-18 FLANGE LOCK NUT |
| 13 | 2 | 2525-451 | 5/8 MED LOCKWASHER ZP |
| 14 | 2 | 2520-452 | 5/8-11 HEX NUT ZP |
| 15 | 2 | 2550-069 | SEAL, TRIPLE LIP, NTI# 1812-5 |
| 16 | 2 | 2965-351 | HUB CAST.,MACHINED, 4 BOLT |
| 17 | 2 | 2570-715 | BEARING INSERT, TRASHMASTER |
| 18 | 2 | 2570-594 | BEARING, 2 ROW NTN# DF0654LU |
| 19 | 2 | 2570-740 | D-BOLT,FLANGE,5/8-11 X 2.812" GR.8 ZYD |
| 20 | 1 | 2967-299 | 5 DEG. WEDGE W.A. |
| 21 | 2 | 2965-128 | HUB AND BEARING ASS'Y.,4 BOLT |

1744

PARTS IDENTIFICATION

2967-044-R & L NOTCHED SCREW ADJ (CNH) R.M.

| DET | QTY | PART NO. | DESCRIPTION |
|-----|-----|---------------|---|
| 1 | 2 | 2966-160 | NOTCHED DISC ASSEMBLY |
| 2 | 8 | 2505-207 | 5/16-18 X 1-1/4 CAR BLT GR5 |
| 3 | 2 | 2965-352-DISC | HUB CAP CASTING, 4 BOLT, BL |
| 4 | 2 | 2571-277 | 16 TOOTH NOTCHED R.M. DISC, |
| 5 | 2 | 2570-740 | D-BOLT 5/8-11 X 2.812" GR. 8 ZP |
| 6 | 2 | 2965-128 | HUB AND BEARING ASS'Y., 4 BOLT |
| 7 | 2 | 2570-594 | BEARING, 2 ROW NTN#DF0654L |
| 8 | 2 | 2570-715 | BEARING INSERT, TRASHMASTER |
| 9 | 2 | 2965-351 | HUB CAST., MACHINED, 4 BOLT |
| 10 | 2 | 2550-069 | SEAL, TRIPLE LIP, NTI# 1812-5 |
| 11 | 8 | 2520-206 | 5/16-18 HEX FLANGE SERRATED NUT |
| 12 | 2 | 2525-451 | 5/8 MED LOCKWASHER ZP |
| 13 | 2 | 2520-452 | 5/8-11 HEX NUT ZP |
| 14 | 2 | 2520-253 | 3/8-16 JAM HEX NUT ZP |
| 15 | 1 | 2966-249-R | (CNH) NOTCHED SCREW ADJ STEM, RH WA (SHOWN) |
| 16 | 1 | 2966-249-L | (CNH) NOTCHED SCREW ADJ STEM, LH WA |
| 17 | 1 | 2967-661 | INDICATOR ROD (CNH) , ZYD |
| 18 | 2 | 2502-316 | 1/2-13 X 3-1/2 HHCS GR 5 ZYD |
| 19 | 1 | 2966-207 | HOUSING W.A., CNH |
| 20 | 2 | 2565-179 | YETTER DECAL, 1 X 3 |
| 21 | 1 | 2967-665 | ACME SCREW (CNH), ZYD |
| 22 | 1 | 2526-453 | 5/8 SAE FLATWASHER ZP |
| 23 | 1 | 2565-815 | ADJUSTMENT DECAL |
| 24 | 1 | 2533-110 | 1/4-28 ZERK STRAIGHT SELF-TAP |
| 25 | 3 | 2510-102 | #10-32 X .25 HSHCPS ZP W/THR LCK |
| 26 | 1 | 2967-652 | DETENT PLATE |
| 27 | 1 | 2967-699 | ADJUSTMENT KNOB (9/07) |
| 28 | 1 | 2530-158 | PIN, COILED SPRING, 1/4X1-1/2, HD |
| 29 | 2 | 2520-357 | 1/2-13 LOCK HEX NUT ZP |
| 30 | 1 | 2526-456 | BVLE DISC SPRG .630 IDX 1.250D |
| 31 | 2 | 2502-244 | 3/8-16 X 1-1/4 HHCS GR 5 ZYD. |
| 32 | 2 | 2960-223 | CYCLO STOP CASTING |
| 33 | 2 | 2520-255 | 3/8-16 HEX LOCK NUT ZYD. |
| 33 | 2 | 2526-253 | 3/8 SAE FLATWASHER ZYD. |



1777

UPDATE 10/27/16

NOTES

NOTES

NOTES

Our name Is getting known

Just a few years ago, Yetter products were sold primarily to the Midwest only. Then we embarked on a program of expansion and moved into the East, the South, the West and now north into Canada. We're even getting orders from as far away as Australia and Africa.

So, when you buy Yetter products . . .you're buying a name that's recognized. A name that's known and respected. A name that's become a part of American agriculture and has become synonymous with quality and satisfaction in the field of conservation tillage.

Thank you.

YETTER MANUFACTURING CO.

Colchester, IL 62326-0358 ☎ 309/776-4111

Toll Free 800/447-5777

Fax 309/776-3222

Website: www.yetterco.com

E-mail: info@yetterco.com

2565-740_REV_D ☎ 11/2016