



## 2984 MAVERICK OPENER™

OPERATOR & PARTS MANUAL

**YETTER MANUFACTURING CO.**  
*FOUNDED 1930*

Colchester, IL 62326-0358  
Toll free: 800/447-5777  
309/776-3222 (Fax)  
Website: [www.yetterco.com](http://www.yetterco.com)  
E-mail: [info@yetterco.com](mailto:info@yetterco.com)

2565-470 • 03/08 • Great River Printing, Hamilton, IL

**YETTER**

## FOREWORD

You've just joined an exclusive but rapidly growing club.

For our part, we want to welcome you to the group and thank you for buying a Yetter product.

We hope your new Yetter products will help you achieve both goals-increase your productivity and increase your efficiency so that you may generate more profit.

This operator's manual has been designed into four major sections: Foreword, Safety Precautions, Installation Instructions and Parts Breakdown.



This **SAFETY ALERT SYMBOL** indicates important safety messages in the manual. When you see this symbol, be alert to the possibility of **PERSONAL INJURY** and carefully read the message that follows.

The word **NOTE** is used to convey information that is out of context with the manual text. It contains special information such as specifications, techniques and reference information of a supplementary nature.

The word **IMPORTANT** is used in the text when immediate damage will occur to the machine due

to improper technique or operation. Important will apply to the same information as specified by note only of an immediate and urgent nature.

It is the responsibility of the user to read the operator's manual and comply with the safe and correct operating procedure and to lubricate and maintain the product according to the maintenance schedule in the operator's manual.

The user is responsible for inspecting his machine and for having parts repaired or replaced when continued use of the product would cause damage or excessive wear to the other parts.

It is the user's responsibility to deliver his machine to the Yetter dealer who sold him the product for service or replacement of defective parts, which are covered by the warranty policy.

If you are unable to understand or follow the instructions provided in this publication, consult your local Yetter dealer or contact:

### **YETTER MANUFACTURING CO.**

309/776-4111

800/447-5777

309/776-3222 (FAX)

Website: [www.yetterco.com](http://www.yetterco.com)

E-Mail: [info@yetterco.com](mailto:info@yetterco.com)

## WARRANTY

Yetter Manufacturing warrants all products manufactured and sold by it against defects in material. This warranty being expressly limited to replacement at the factory of such parts or products as shall appear to be defective after inspection. This warranty does not obligate the Company to bear cost of labor in replacement of parts. It is the policy of the Company to make improvements without incurring obligations to add them to any unit already sold. No warranty is made or authorized to be made, other than herein set forth. This warranty is in effect for one year after purchase.

Dealer \_\_\_\_\_

**Yetter Manufacturing warrants its own products only and cannot be responsible for damages to equipment on which mounted.**

# **SAFETY**

**A brief description of signal words that may be used in this manual:**

**CAUTION:** Used as a general reminder of good safety practices or to direct attention to unsafe practices.

**WARNING:** Denotes a specific potential hazard

**DANGER:** Denotes the most serious specific potential hazard.

## **SAFETY PRECAUTIONS**

You can make your farm a safer place to live and work if you observe the safety precautions given. Study these precautions carefully and insist that they be followed by those working with you and for you.

Finally, remember this: an accident is usually caused by someone's carelessness, neglect or oversight.

## **WARNING**

Never clean, lubricate or adjust a machine that is in motion. Always lower or block the implement before performing service.

If machine must be serviced in the raised position, jack or block it up to prevent it from accidentally falling and injuring someone.

Do not allow riders on the tractor or implement.

Use speeds and caution dictated by the terrain being traversed. Do not operate on any slope steep enough to cause tipping or loss of control.

Be sure all personnel are clear of the immediate area before operating.

Read and understand the operator's manual and require all other persons who will operate the equipment to do the same.

Be familiar with all tractor and implement controls and be prepared to stop engine and implements quickly in an emergency.

## **CAUTION**

Consult your implement and tractor operator's manual for correct and safe operating practices.

Beware of towed implement width and allow safe clearance.

**FAILURE TO HEED MAY RESULT IN PERSONAL INJURY OR DEATH.**

## INTRODUCTION

The 2984 Maverick Opener<sup>®</sup> Unit has been specifically designed for strip-till and those users who demand the utmost in accuracy of fertilizer placement along with the durability and capability to perform at least one other operation in the field simultaneously.

The Maverick Opener<sup>®</sup> is a combination of existing and new technologies. The unit is based on our patented parallel arms and attaches to a toolbar with a rugged clamp bracket casting. The main frame is a heavy welded bracket, which includes the ever-useful faceplate, for mounting of various attachments. Behind the faceplate is the knife plate, attached by a pivot bolt and a shear bolt. The fertilizer knife is attached to the lower part of the knife plate. The upper rear part of the knife plate has provisions for attachment of either a disc sealer or a wheel sealer with 4.5 x 16 gauge wheel tires.

This is a very versatile unit that may be complemented by other Yetter attachments, such as the 2960 unit coulter and 2967-026 residue manager.

## OPERATION

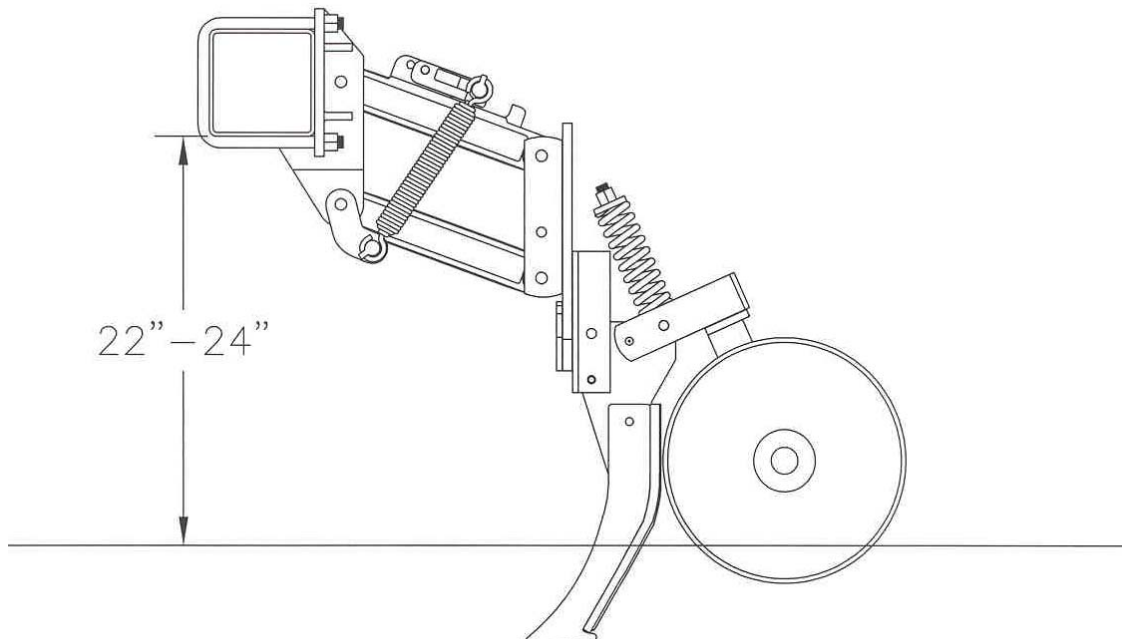
The Maverick Opener<sup>®</sup> is a universal tool designed for use in any fertilizer management program. The Maverick Opener<sup>®</sup> is the ultimate unit when properly equipped for; Fall strip tillage, Spring pre-plant and Summer side-dressing of commercial fertilizer.

The unit when equipped with sealing wheels is ideal for controlling soil disturbance and leaving a level soil surface with the fertilizer sealed in. The unit equipped with sealing discs may be set up to close the knife slot with the blades pushing or with the blades turned to pull, form a mound or "berm" of soil over the knife slot to seal in the fertilizer.

It is important to remember that the Maverick Opener<sup>®</sup> unit is similar to a planter unit in operation, thus it is very important to adjust the frame height and levelness for best performance.

Soil conditions (i.e.; frozen soil, rocks, heavy, tough residue) have an influence on performance. If damp soil is building up on the wheels, discs or knives then it is less than optimum conditions to operate, thus the Maverick Opener<sup>®</sup> will not work at it's best.

**CAUTION** Frozen soil or heavy rock population may cause damage to the Maverick Opener<sup>®</sup>.

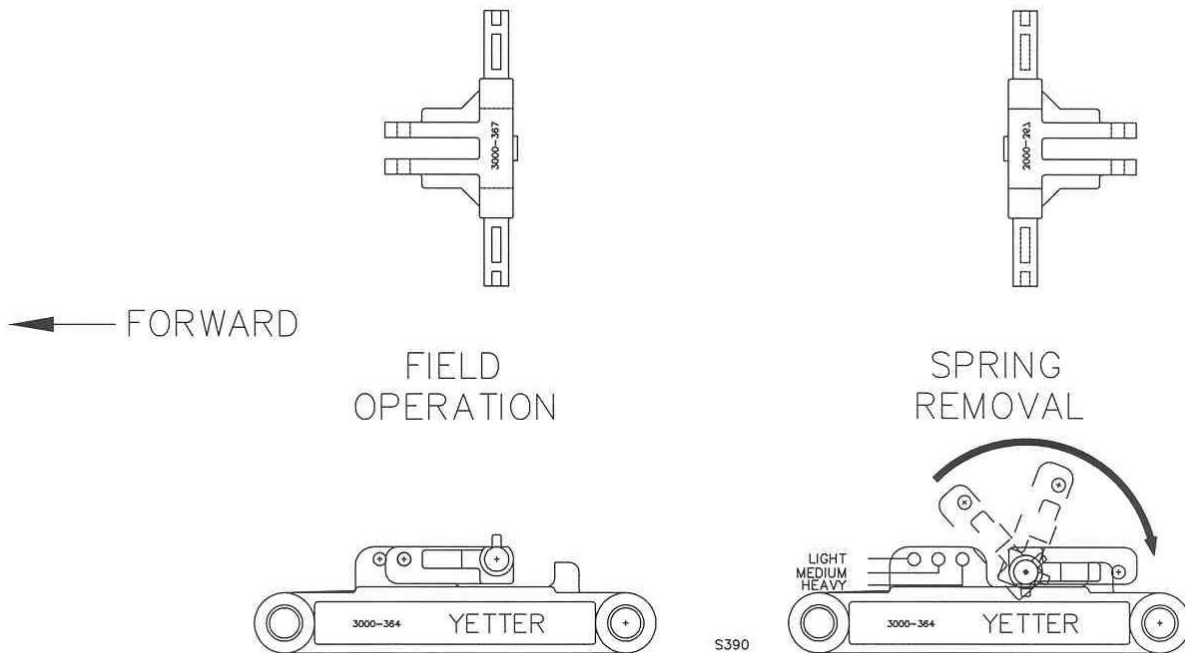


S391

## ASSEMBLY

The Maverick Opener may be assembled to a variety of toolbars including 4 x 4, 5 x 7 and 7 x 7.

1. Mark the location of the center of each row on the toolbar. Then measure, from each row, over 4" and place a mark on the rear side of the toolbar. This will give a reference point to where the edge of the clamp bracket (3000-368) should be so that the fertilizer knife will be centered directly on the row.
2. Attach the 3000-368, clamp bracket, to the toolbar with the appropriate u-bolts and tighten with the proper tools securely.
3. Insert the parallel arm bushings into the upper and lower parallel arms. To assemble the parallel mount frame to the parallel arm assembly, attach the parallel mount frame to the parallel arms using the 3/4 x 5 bolts and hex lock nuts. NOTE: Assembly will be easier if the down pressure springs are set in the light or forward most setting.



4. Attach the knife plate to the mount frame with 5/8 x 2-1/2 bolt and 1/2 x 2-1/2 bolt. This is a pivot bolt and shear bolt arrangement. NOTE: If the soil is hard and/or there are stones present, then you will want to have extra 1/2 x 2-1/2" shear bolts on hand.
5. Attach a fertilizer knife to the left side of the knife plate with two 1/2 x 1-3/4" bolts, lock washers and hex nuts.

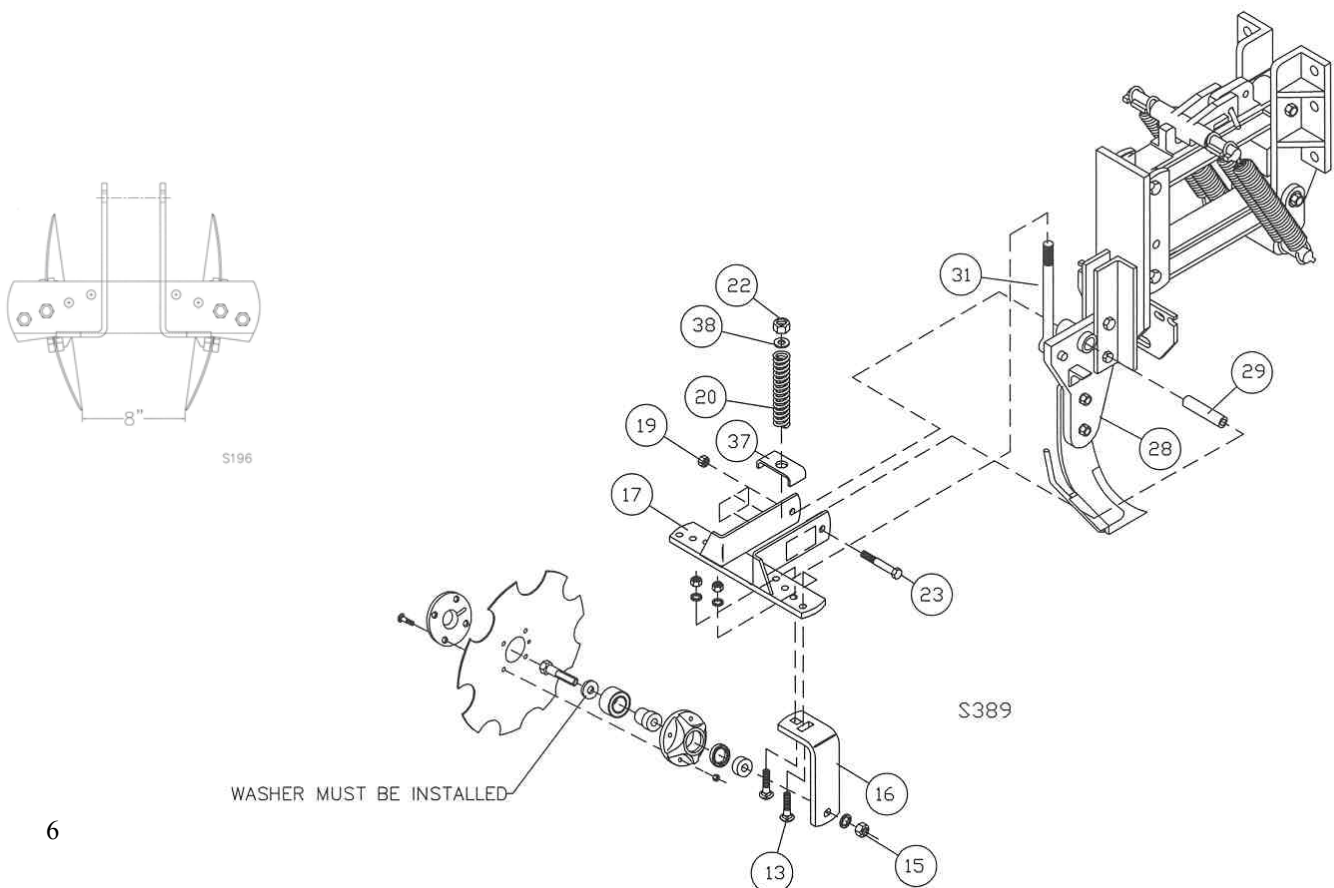
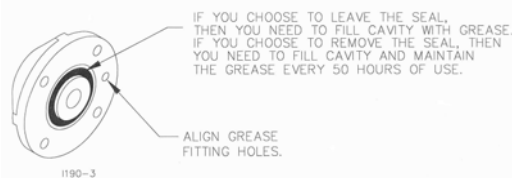
### U-BOLT KITS

<i>Part No.</i>	<i>Description</i>
3000-109	4 x 4 U-Bolt Kit
6000-010	5 x 7 Planter U-Bolt Kit
6000-011	7 x 7 Planter U-Bolt Kit

## SEALING DISC ASSEMBLY

See Parts Identification on Page 8.

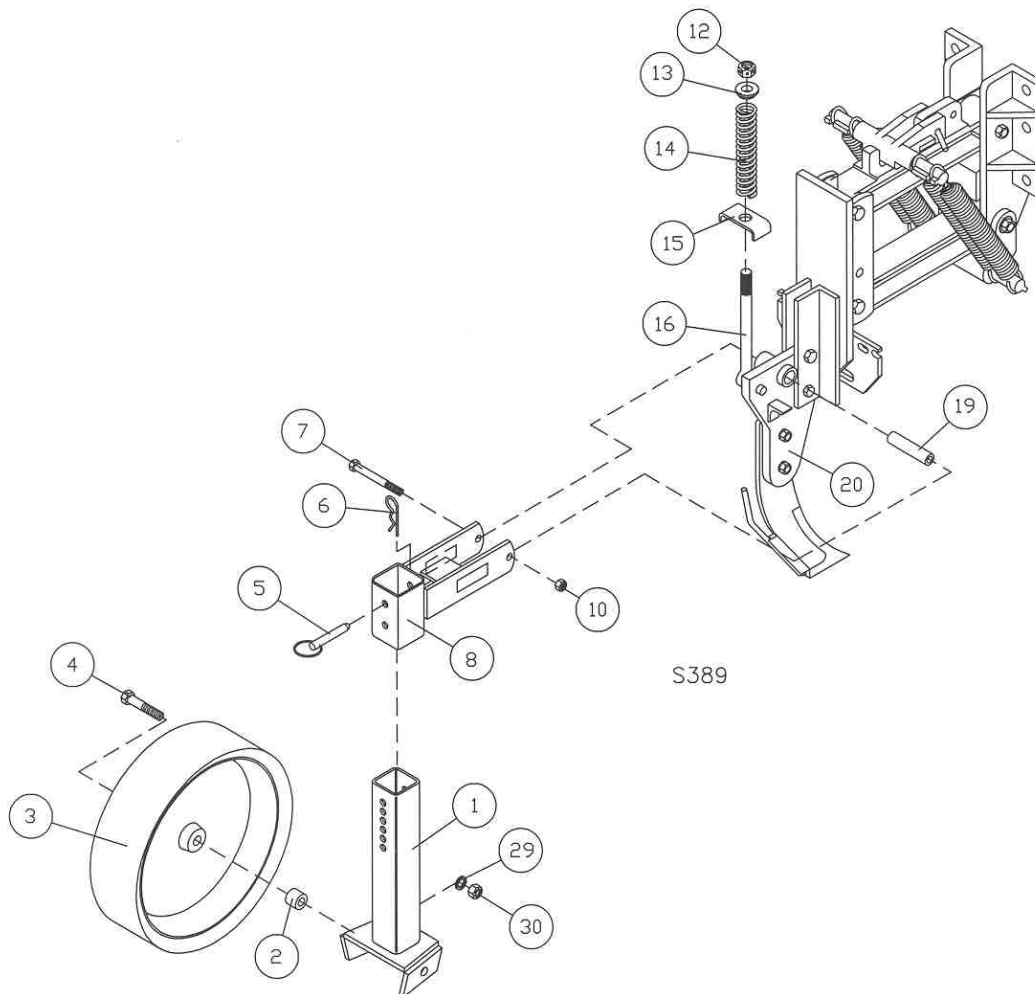
1. Insert the inner pivot bushing (29) into the pivot collar of the knife plate (28).
2. Hook the pushrod (31) onto the peg of the knife plate.
3. Attach the disc sealer arm (17) to the knife plate at the pivot collar using the 1/2" x 4-1/2" bolt (23) and lock hex nut (19).
4. Slide the spring bracket (37), spring (20) and spring bushing (38) onto the pushrod and secure with the 3/4" hex lock nut (22).
5. Before assembling the blade, bearing assembly and hubcap, remove the seal (optional) from the exposed side of the bearing assembly if you choose to grease the bearing, otherwise the bearing is sealed. Lubricate every 50 hours. NOTE: The washer must be installed or the blade will fall off during use.
6. When assembling, be certain to align the grease zerk with the hole in the blade and the groove in the hubcap to provide the grease with a channel to get to the bearing.
7. Attach the disc assembly to the disc bracket (16) and fasten with the 5/8" hex nut (15). Then bolt the disc and bracket assembly to the sealer arm, previously attached to the Maverick Opener in step 3, using the 1/2" x 2" carriage bolt (13). NOTE: A reference point to start with the angle of the blades is illustrated below.



## SEALING WHEELS ASSEMBLY

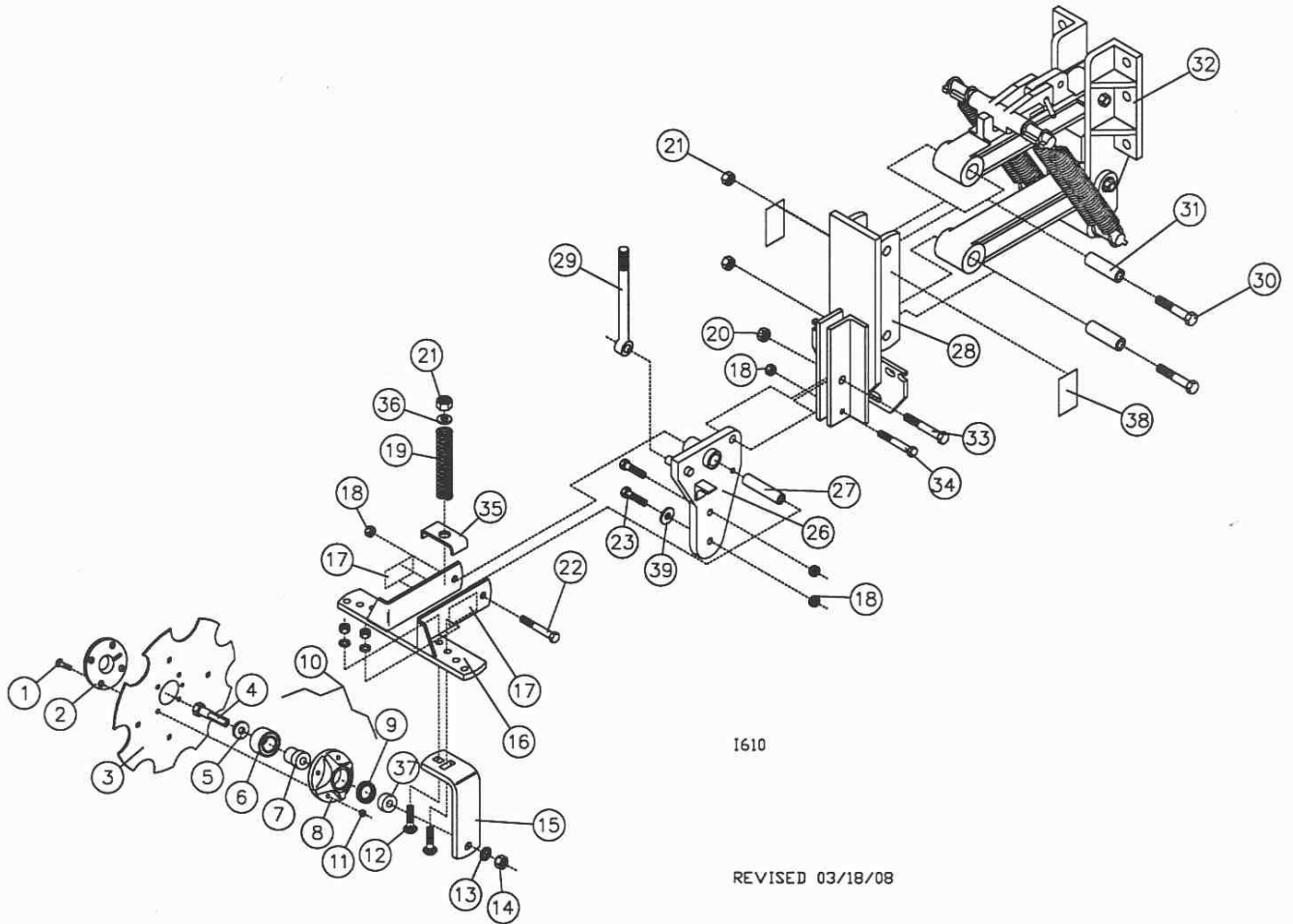
See Parts Identification on Page 9.

1. Insert the inner pivot bushing (19) into the pivot collar of the knife plate (20).
2. Hook the pushrod (16) onto the peg of the knife plate.
3. Attach the wheel sealer arm (8) to the knife plate to the pivot collar using the 1/2" x 4-1/2" bolt (7) and hex lock nut (10).
4. Slide the spring bracket (15), spring (14) and spring bushing (13) onto the pushrod and secure with the 3/4" hex lock nut (12).
5. Now attach the 4-1/2 x 16 wheel (3) to the adjustment stem (1) with the 5/8" x 4" bolt (4), spacer (3), lockwasher (29) and hex nut (30). Repeat for second wheel
6. Install the stem and wheel assembly into the socket of the sealer wheel arm, align the holes and insert the adjustment pin (5) and secure with the hairpin cotter (6). NOTE: The narrowest gap between the wheels should be forward and the widest spacing to the rear.



# PARTS IDENTIFICATION

2984-001-ND Maverick Opener w/Notched Discs  
 2984-001-SD Maverick Opener w/Sealing Discs



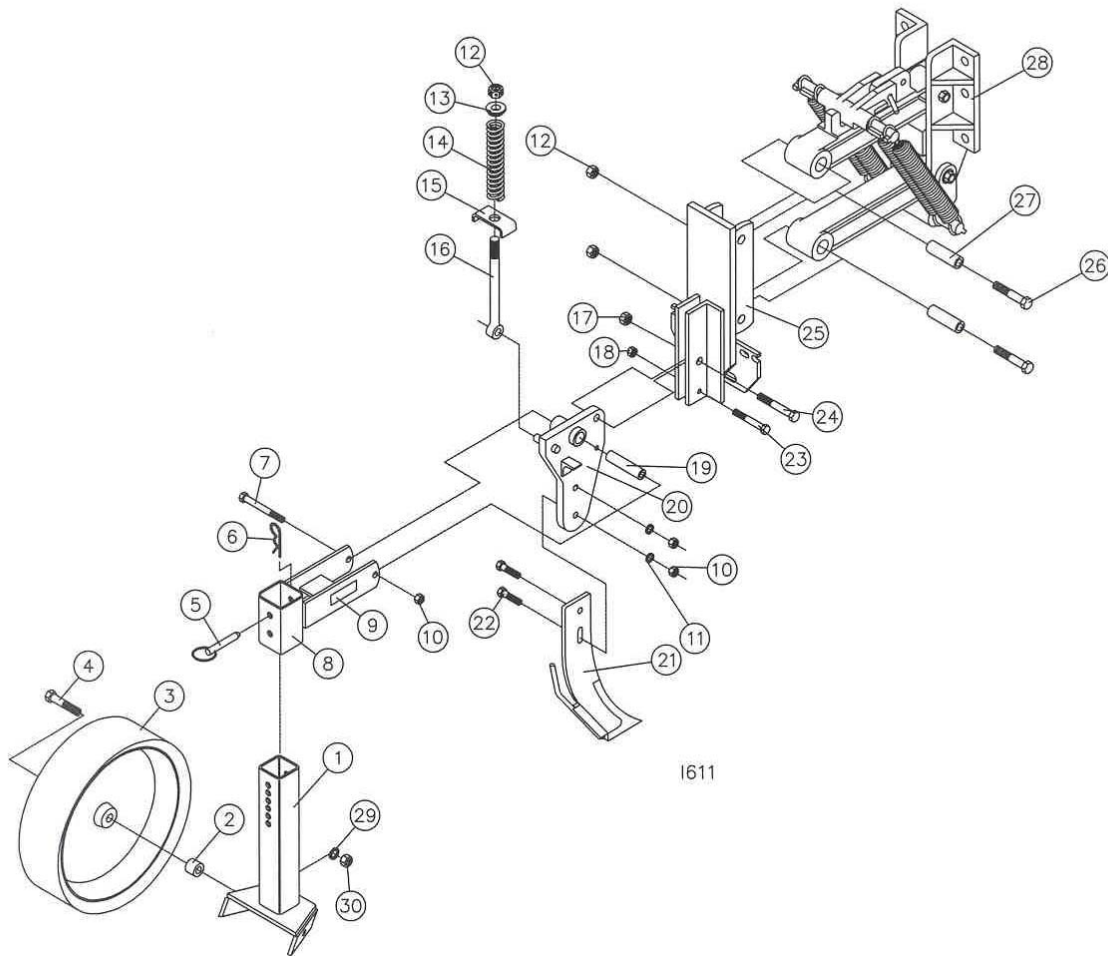
1610

REVISED 03/18/08

DET	QTY	PART NO.	DESCRIPTION	DET	QTY	PART NO.	DESCRIPTION
1	8	2505-208	5/16-18 X 1 1/2 CAR BLT GR5 ZP	20	1	2520-459	5/8-11 LOCK HEX NUT ZP
2	2	2965-352	HUB CAP CASTING, 4 BOLT, BLACK	21	3	2520-515	3/4-10 LOCK HEX NUT ZP
3	2	6001-495	MARKER DISC,NOTCH,PUNCH,4 BOLT	22	1	2502-363	1/2-13 X 4-1/2 HHCS GR. 5 ZP
4	2	2570-742	5/8-11 X 4" 'D' BOLT GR. 5 ZYD	23	2	2502-317	1/2-13 X 1-3/4 HHCS GR. 5 ZP
5	2	2527-530	1.500 X 21/32ID 3/16TK MA BU	24	4	2525-352	1/2 MED LOCKWASHER ZP
6	2	2570-594	BEARING, 2 ROW NTN# DF0654LU	25	4	2520-352	1/2-13 HEX NUT ZP
7	2	2570-715	BEARING INSERT, TRASHMASTER	26	1	2925-201	KNIFE PLATE W.A.
8	2	2965-351	HUB CAST.,MACHINED, 4 BOLT	27	1	2920-342	INNER PIVOT BUSHING, ZYD
9	2	2550-052	SEAL, CR# 13548	28	1	2984-200	PARALLEL MOUNT W.A.
10	2	2965-128	HUB AND BEARING ASS'Y.,4 BOLT (INCLUDES #6,7,8 & 9)	29	1	2920-324	PUSHROD, 9 3/16" EYEBOLT, ZP
11	8	2520-205	5/16-18 LOCK HEX NUT ZP	30	2	2502-507	3/4-10 X 5 HHCS GR5 ZP
12	4	2505-345	1/2-13 X 2 CAR BLT GR. 5 ZP	31	2	3000-393	PARALLEL ARM BUSHING ZYD
13	2	2525-451	5/8 MED LOCKWASHER ZP	32	1	3000-122	PARALLEL ARM ASSEMBLY
14	2	2520-452	5/8-11 HEX NUT ZP	33	1	2502-393	5/8-11 X 2-1/2 HHCS GR. 5 ZP
15	2	2920-329	BRACKET, DISC SEALER	34	1	2502-303	1/2-13 X 2-1/2 HHCS GR. 2 ZP
16	1	2920-209	DISC SEALER ARM W.A.	35	1	2920-330	BRACKET, DISC SEALER SPRING
17	2	2565-162	YETTER DECAL, 1-1/2 X 4-1/2	36	1	2975-302	2975 SPRING BUSHING "PAINTED"
18	4	2520-357	1/2-13 LOCK HEX NUT ZP	37	2	2967-302	SPACER, 3/4" ZYD
19	1	2550-745	COMP. SPRING, .393 W, 1 5/8"ID	38	2	2565-474	MAVERICK COULTER DECAL
				39	1	2526-355	1/2 FLATWASHER, HARD'ND, P.C.



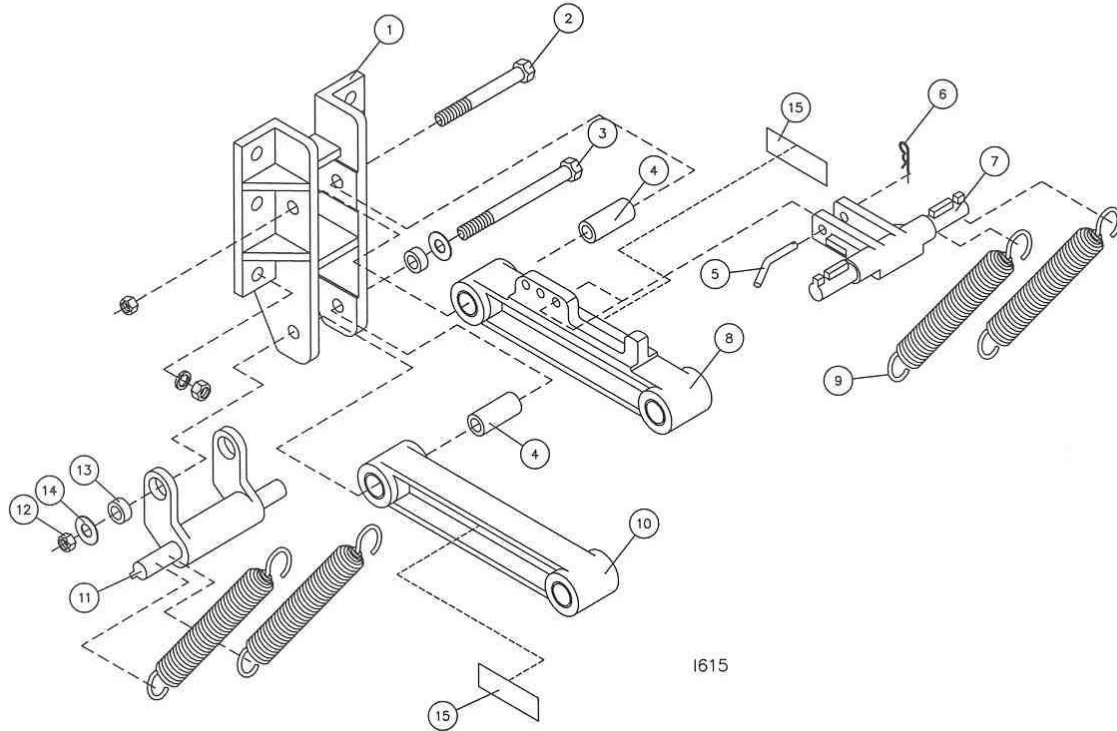
# PARTS IDENTIFICATION



## 2984-001-SW Maverick Opener w/Sealing Wheels

Key	Qty.	Part No.	Description	Key	Qty.	Part No.	Description
1	1	2925-206	Adjustment Stem W.A.	15	1	2920-330	Bracket, Disc Sealer Spring
2	2	2967-302	Spacer, 3/4" ZYD	16	1	2920-324	Pushrod, 9 3/16" Eyebolt, ZP
3	2	2570-750	4.5x16 Nyl/Stl Ga Whl 40MMOfst	17	1	2520-459	5/8-11 Lock Hex Nut ZP
	1	2550-061	Bearing, Marker Disk, 40MM	18	1	2520-357	1/2-13 Lock Hex Nut ZP
	1	2570-142	4.5 x 16 Chined Gauge Whl Tire	19	1	2920-342	Inner Pivot Bushing ZYD
	2	2570-143	16" Gauge Wheel Half	20	1	2925-201	Knife Plate W.A.
4	2	2502-336	5/8-11 x 4 HHCS Gr. 5 ZP	21	1	2920-204	NH3 Knife w/Tube Protector (Opt.)
5	1	2925-315	Pin, L128	22	2	2502-317	1/2-13 x 1-3/4 HHCS Gr. 5 ZP
6	1	2570-448	1/8 Std. Hairpin Cotter ZP	23	1	2502-303	1/2-13 x 2-1/2 HHCS Gr. 2 ZP
7	1	2502-363	1/2-13 x 4-1/2 HHCS Gr. 5 ZP	24	1	2502-393	5/8-11 x 2-1/2 HHCS Gr. 5 ZP
8	1	2984-202	Maverick Sealer Wheel Arm W.A.	25	1	2984-200	Parallel Mount W.A.
9	2	2565-179	Yetter Decal, 1" x 3"	26	2	2502-507	3/4-10 x 5 HHCS Gr. 5 ZP
10	3	2520-352	1/2-13 Hex Nut ZP	27	2	3000-393	Parallel Arm Bushing ZYD
11	3	2525-352	1/2 Med. Lockwasher ZP	28	1	3000-122	Parallel Arm Assembly
12	3	2520-515	3/4-10 Lock Hex Nut ZP	29	2	2525-451	5/8 Med. Lockwasher ZP
13	1	2975-302	2975 Spring Bushing "Painted"	30	2	2520-452	5/8-11 Hex Nut ZP
14	1	2550-745	Comp. Spring, .393 W, 1 5/8"ID				

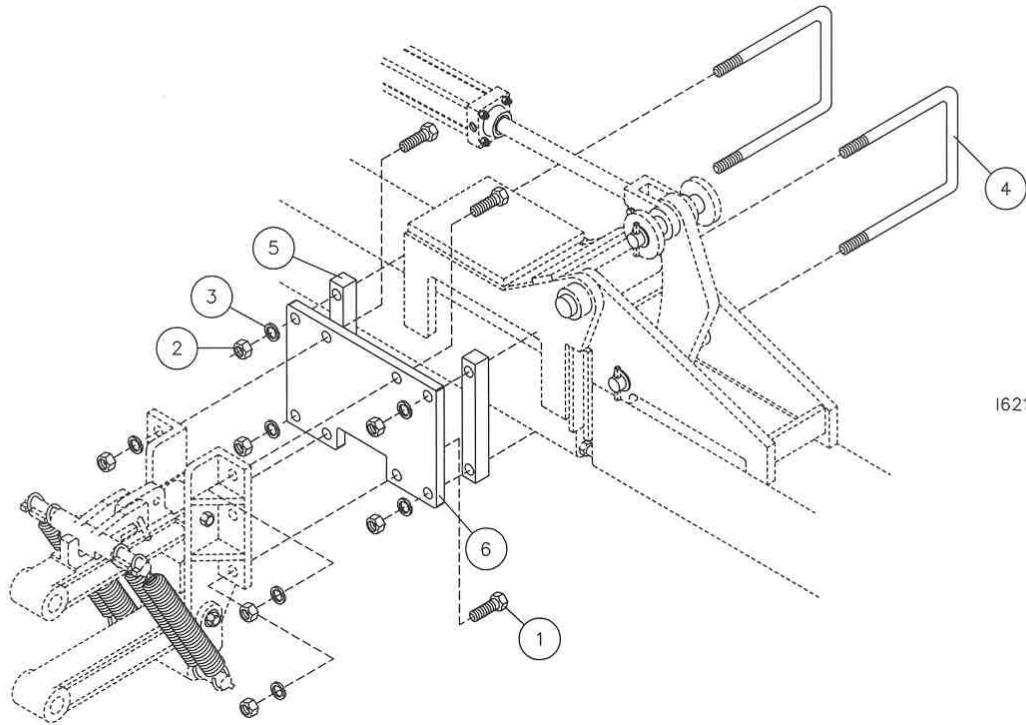
# PARTS IDENTIFICATION



## 3000-122 Parallel Arm Assembly

Key	Qty.	Part No.	Description
1	1	3000-368	Clamp Bracket (Machined)
2	1	2502-510	3/4-10 x 6 HHCS Gr. 5 ZP
3	1	2502-509	3/4-10 x 7 HHCS Gr. 5 ZP
4	2	3000-393	Parallel Arm Bushing ZYD
5	1	2965-305	Pin, Furrowing Attachment ZYD
6	1	2570-448	1/8 Std. Hairpin Cotter ZP
7	1	3000-367	Upper Spring Bar
8	1	3000-133	Upper Parallel Arm Assembly
9	2	2528-363	1-1/4 ID x 1-1/2 OD x 3 Bronze Bushing
9	4	2960-373	Ext Spring 1 5/8OD x .262 Blk
10	1	3000-134	Lower Parallel Arm Assembly
10	2	2528-363	1-1/4 ID x 1-1/2 OD x 3 Bronze Bushing
11	1	3000-366	Lower Spring Bar
12	2	2520-515	3/4-10 Lock Hex Nut ZP
13	2	3000-396	Spring Bar Bushing
14	2	2526-501	3/4 Standard Flatwasher ZP
15	2	2565-162	Yetter Decal, 1-1/2 x 4-1/2

# PARTS IDENTIFICATION



1621

## 3000-131 Mount Plate Kit

For 7 x 7 folding toolbar, to get accurate row spacing at the toolbar hinges.

Key	Qty.	Part No.	Description
1	4	2502-407	3/4-10 x 2-1/2" HHCS Gr. 5 ZP
2	8	2520-504	3/4-10 Hex Nut ZP
3	8	2525-501	3/4 Med Lockwasher ZP
4	2	2570-484	3/4 x 7 x 10 U-Bolt ZP
5	2	4100-304	Drilled Spacer Bar
6	1	3000-394	Mounting Plate

## TROUBLESHOOTING

Problem	Cause	Solution
Poor overall performance	Toolbar not adjusted correctly	Adjust the toolbar so that during operation it is level and at a height of 22" – 24" from the bottom of the toolbar to the soil surface.
Toolbar height too high	Too much downpressure spring tension	Remove two outer springs & set in light pressure setting
	Toolbar gauge wheels adjusted too low	Raise gauge wheels
Shallow knife penetration	Speed too slow	Operate at 5mph min.
	Toolbar height too high	Must have toolbar operating at 22" – 24" above the soil surface
	Insufficient downpressure	Set downpressure spring adjustment to the rear hole
		Inspect springs for breakage and/or wear
		Adjust toolbar height lower. Normally 22" – 24"
Disc Sealer blade & hub fall off	Washer not installed in the disc assembly.	See page 7 for proper assembly.
Disc Sealer not creating a mound or too small of a mound	Speed too slow	Operate at 5mph min.
	Blades are not set aggressively enough	Increase the angle of the front edge of blade to the row.
	Down pressure spring is loose	Tighten the coil spring by compressing; tighten the 3/4" hex nut onto the pushrod.
	Toolbar is not level-probably nose down	Level toolbar at a height of 22" – 24" from soil surface.
Wheel Sealer not creating a mound	Not designed to create a mound	The disc sealer option is recommended for mound building.
Wheel Sealer not closing the knife trench	Downpressure spring is loose	Tighten the coil spring by compressing; tighten the 3/4" hex nut onto the pushrod.