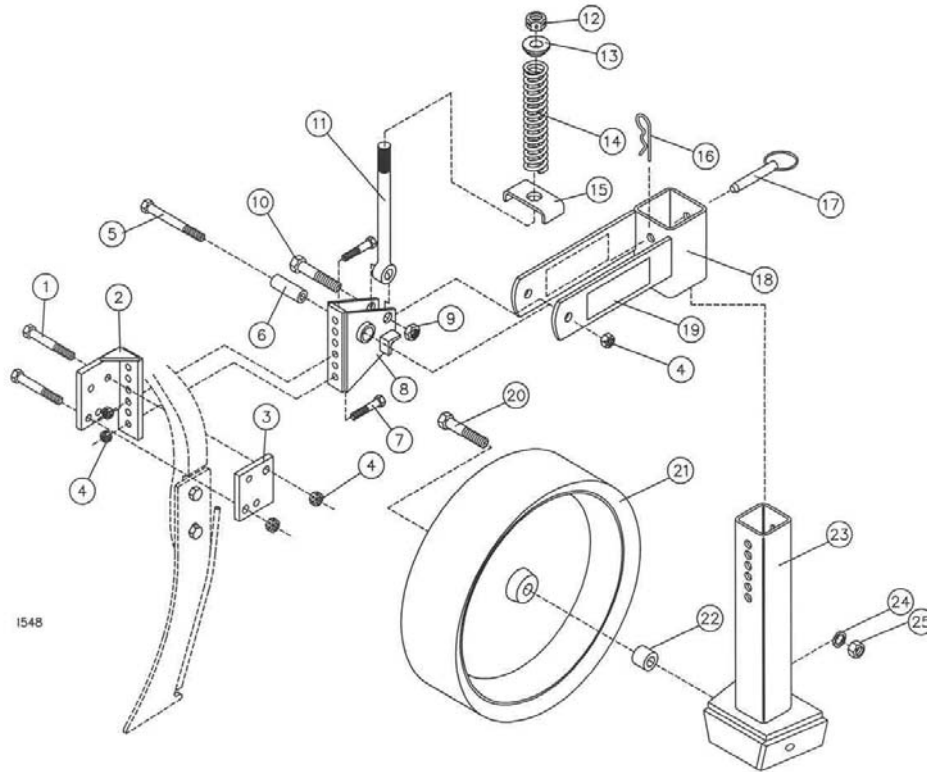


2920-020 SEALER WHEELS W/2920-212 BRACKET



KEY	QTY.	PART NO.	DESCRIPTION
1	2	2502-313	1/2-13 X 3 HHCS GR. 5 ZP
2	1	2920-211	SHANK MOUNTING BRACKET W.A.
3	1	2920-339	SHANK MOUNTING CLAMP PLATE
4	4	2520-357	1/2-13 LOCK HEX NUT ZP
5	1	2502-363	1/2-13 X 4-1/2 HHCS GR. 5 ZP
6	1	2920-342	INNER PIVOT BUSHING ZYD
7	2	2502-317	1/2-13 X 1-3/4 HHCS GR. 5 ZP
8	1	2920-210	MOUNTING BRACKET W.A.
9	1	2520-467	5/8-11 JAM HEX NUT ZP
10	1	2502-393	5/8-11 X 2-1/2 HHCS GR. 5 ZP
11	1	2920-324	PUSHROD, 9-3/16" EYEBOLT, ZP
12	1	2520-515	3/4-10 LOCK HEX NUT ZP
13	1	2975-302	2975 SPRING BUSHING, PAINTED
14	1	2920-350	COMPRESSION SPRING, SEALER
15	1	2920-330	DISC SEALER SPRING BRACKET
16	1	2570-448	1/8 STANDARD HAIRPIN COTTER ZP
17	1	2925-315	PIN, L128
18	1	2920-212	SEALER WHEEL ARM W.A.
19	2	2565-162	YETTER DECAL, 1-1/2 X 4-1/2
20	2	2502-336	5/8-11 X 4 HHCS GR. 5 ZP
21	2	2570-750	4.5X16 NYL/STL GA WHL 40MM OFFSET
22	2	2967-302	SPACER, 3/4" ZYD
23	1	2925-206	ADJUSTMENT STEM W.A.
24	2	2525-451	5/8 MED. LOCKWASHER ZP
25	2	2520-452	5/8-11 HEX NUT ZP

YETTER MANUFACTURING CO.

FOUNDED 1930

Colchester, IL 62326-0358

Toll free: 800/447-5777

309/776-3222 (Fax)

1. Attach Shank Mounting Bracket W.A. (#2) and shank mounting clamp plate (#3) to shank with two 1/2 x 3 bolts and lock nuts.
2. Attach the Mounting Bracket W.A. (#8) to the shank mounting bracket with two 1/2 x 1-3/4 bolts and lock nuts.
3. Insert the inner pivot bushing (#6) through the pivot collar of the mounting bracket.
4. Insert the push rod between the side plates of the mounting bracket and secure with a 5/8 x 2-1/2" bolt and jam nut.
5. Attach the sealer wheel arm W.A. (#18) to the mounting bracket with a 1/2 X 4-1/2" bolt and hex nut.
6. Slide the spring bracket (#15), spring (#14), spring bushing (#13) and 3/4" lock nut on the push rod. Tighten the nut down until about 1/4" of threads are exposed.
7. Attach the 4.5" x 16" gauge wheels (#21) to the adjustment stem (#23) with a 5/8 x 4" bolt, 3/4" spacer, lockwasher and 5/8" nut.
8. Slide gauge wheel assembly into the sealer wheel arm and secure with pin (#17).